



Smithsonian Institution

Smithsonian Institution Archives

Bailey - Illinois, Minnesota, Nebraska, Wyoming, March 1890 - June 1890

Extracted on Apr-23-2024 10:31:00

The Smithsonian Institution thanks all digital volunteers that transcribed and reviewed this material. Your work enriches Smithsonian collections, making them available to anyone with an interest in using them.

The Smithsonian Institution (the "Smithsonian") provides the content on this website (transcription.si.edu), other Smithsonian websites, and third-party sites on which it maintains a presence ("SI Websites") in support of its mission for the "increase and diffusion of knowledge." The Smithsonian invites visitors to use its online content for personal, educational and other non-commercial purposes. By using this website, you accept and agree to abide by the [following terms](#).

- If sharing the material in personal and educational contexts, please cite the Smithsonian Institution Archives as source of the content and the project title as provided at the top of the document. Include the accession number or collection name; when possible, link to the Smithsonian Institution Archives website.
- If you wish to use this material in a for-profit publication, exhibition, or online project, please contact Smithsonian Institution Archives or transcribe@si.edu

For more information on this project and related material, contact the Smithsonian Institution Archives. [See this project](#) and other collections in the Smithsonian Transcription Center.

[[blank page]]
[[end page]]

[[start page]]

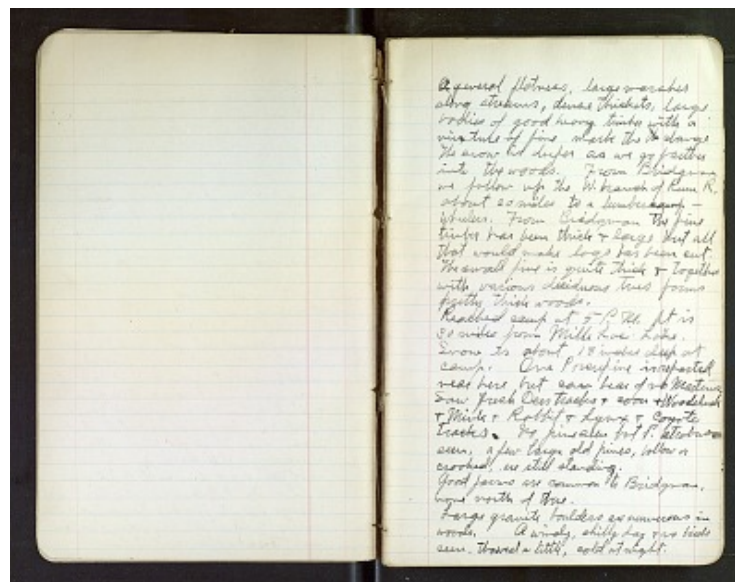
A general flatness, large marshes along streams, dense thickets, large bodies of good heavy timber with a mixture of pine mark the ~~the~~ change. The snow is deeper as we go farther into the woods. From Bridgman we follow up the W. branch of Run R. about 20 miles to a lumbercamp - Wheelers. From Bridgman the pine timber has been thick & large but all that would make logs has been cut. The small pine is quite thick & together with various deciduous trees forms pretty thick woods.

Reached camp at 5 P.M. It is 30 miles from Mille Lac Lake. Snow is about 18 inches deep at camp. One Porcupine is reported near here but can hear of no Martins.

Saw fresh Deer tracks & coon & Woodchuck & Mink & Rabbit & Lynx & Coyote tracks. No pine seen but P. strobus. seen, a few large old pines, hollow or crooked, are still standing.

Good farms are common to Bridgman, none north of there.

Large granite boulders are numerous in woods. A windy, chilly day & no birds seen. Thawed a little, cold at night.



Bailey - Illinois, Minnesota, Nebraska, Wyoming, March 1890 - June 1890
Transcribed and Reviewed by Digital Volunteers
Extracted Apr-23-2024 10:31:00



Smithsonian Institution

Smithsonian Institution Archives

The mission of the Smithsonian is the increase and diffusion of knowledge - shaping the future by preserving our heritage, discovering new knowledge, and sharing our resources with the world. Founded in 1846, the Smithsonian is the world's largest museum and research complex, consisting of 19 museums and galleries, the National Zoological Park, and nine research facilities. Become an active part of our mission through the Transcription Center. Together, we are discovering secrets hidden deep inside our collections that illuminate our history and our world.

Join us!

The Transcription Center: <https://transcription.si.edu>

On Facebook: <https://www.facebook.com/SmithsonianTranscriptionCenter>

On Twitter: [@TranscribeSI](https://twitter.com/TranscribeSI)

Connect with the Smithsonian

Smithsonian Institution: www.si.edu

On Facebook: <https://www.facebook.com/Smithsonian>

On Twitter: [@smithsonian](https://twitter.com/smithsonian)