



**Smithsonian Institution**

*Smithsonian Institution Archives*

## **Bailey - California, Nevada, March 1891 - October 1891**

Extracted on Mar-29-2024 04:19:55

**The Smithsonian Institution thanks all digital volunteers that transcribed and reviewed this material. Your work enriches Smithsonian collections, making them available to anyone with an interest in using them.**

The Smithsonian Institution (the "Smithsonian") provides the content on this website ([transcription.si.edu](https://transcription.si.edu)), other Smithsonian websites, and third-party sites on which it maintains a presence ("SI Websites") in support of its mission for the "increase and diffusion of knowledge." The Smithsonian invites visitors to use its online content for personal, educational and other non-commercial purposes. By using this website, you accept and agree to abide by the [following terms](#).

- If sharing the material in personal and educational contexts, please cite the Smithsonian Institution Archives as source of the content and the project title as provided at the top of the document. Include the accession number or collection name; when possible, link to the Smithsonian Institution Archives website.
- If you wish to use this material in a for-profit publication, exhibition, or online project, please contact Smithsonian Institution Archives or [transcribe@si.edu](mailto:transcribe@si.edu)

For more information on this project and related material, contact the Smithsonian Institution Archives. [See this project](#) and other collections in the Smithsonian Transcription Center.

[[blank page]]  
[[end page]]

[[start page]]  
4200 4050

6750  
1055  
[[line indicating subtraction]]  
5695

3825  
2770  
[[line indicating subtraction]]  
1055

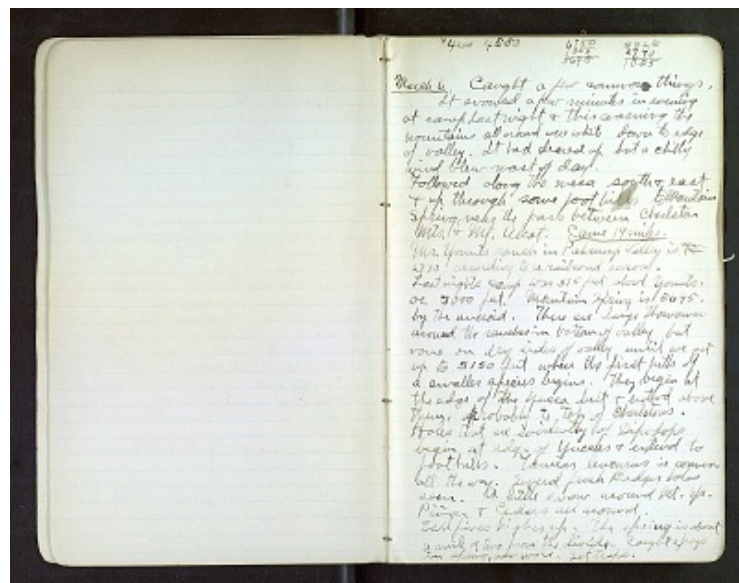
[[underlined]] March 6 [[/underlined]] Caught a few common things. It snowed a few minutes in evening at camp last night & this morning the mountains all around were white down to edge of valley. It had cleared up but a chilly wind blew most of day. Followed along the mesa south & east & up through some foothills to Mountain Spring, near the pass between Charleston Mts. & Mt. Alcot. [[underlined]] Some 19 miles. [[/underlined]].

Mr Younts ranch in Pahrump valley is ~~T~~ 2770 according to a railroad survey.

Last night's camp was 375 feet above Younts. or 3000 feet. Mountain Spring is 5695. by the aneroid. There are large Thomomys around the ranches in bottom of valley but none on dry sides of valley until we get up to 3150 feet where the first hills of a smaller species begins. They begin at the edge of the Yucca belt & extend above them, probably to top of Charltons.

Holes that are evidently of Dipodops begin at edge of Yuccas & extend to foothills. Tamias leucurus is common all the way. Several fresh Badger holes seen. A little snow around Mt. Spr. Piñon & Cedars all around.

Tall pines higher up. The spring is about a mile or two from the divide. Caught frogs in spring, saw more. Set traps.



Bailey - California, Nevada, March 1891 - October 1891  
Transcribed and Reviewed by Digital Volunteers  
Extracted Mar-29-2024 04:19:55



## Smithsonian Institution

*Smithsonian Institution Archives*

The mission of the Smithsonian is the increase and diffusion of knowledge - shaping the future by preserving our heritage, discovering new knowledge, and sharing our resources with the world. Founded in 1846, the Smithsonian is the world's largest museum and research complex, consisting of 19 museums and galleries, the National Zoological Park, and nine research facilities. Become an active part of our mission through the Transcription Center. Together, we are discovering secrets hidden deep inside our collections that illuminate our history and our world.

Join us!

The Transcription Center: <https://transcription.si.edu>

On Facebook: <https://www.facebook.com/SmithsonianTranscriptionCenter>

On Twitter: [@TranscribeSI](https://twitter.com/TranscribeSI)

Connect with the Smithsonian

Smithsonian Institution: [www.si.edu](http://www.si.edu)

On Facebook: <https://www.facebook.com/Smithsonian>

On Twitter: [@smithsonian](https://twitter.com/smithsonian)