



Smithsonian Institution

Smithsonian Institution Archives

Bailey - California, Nevada, March 1891 - October 1891

Extracted on Apr-24-2024 07:23:58

The Smithsonian Institution thanks all digital volunteers that transcribed and reviewed this material. Your work enriches Smithsonian collections, making them available to anyone with an interest in using them.

The Smithsonian Institution (the "Smithsonian") provides the content on this website (transcription.si.edu), other Smithsonian websites, and third-party sites on which it maintains a presence ("SI Websites") in support of its mission for the "increase and diffusion of knowledge." The Smithsonian invites visitors to use its online content for personal, educational and other non-commercial purposes. By using this website, you accept and agree to abide by the [following terms](#).

- If sharing the material in personal and educational contexts, please cite the Smithsonian Institution Archives as source of the content and the project title as provided at the top of the document. Include the accession number or collection name; when possible, link to the Smithsonian Institution Archives website.
- If you wish to use this material in a for-profit publication, exhibition, or online project, please contact Smithsonian Institution Archives or transcribe@si.edu

For more information on this project and related material, contact the Smithsonian Institution Archives. [See this project](#) and other collections in the Smithsonian Transcription Center.

[[blank page]]
[[end page]]

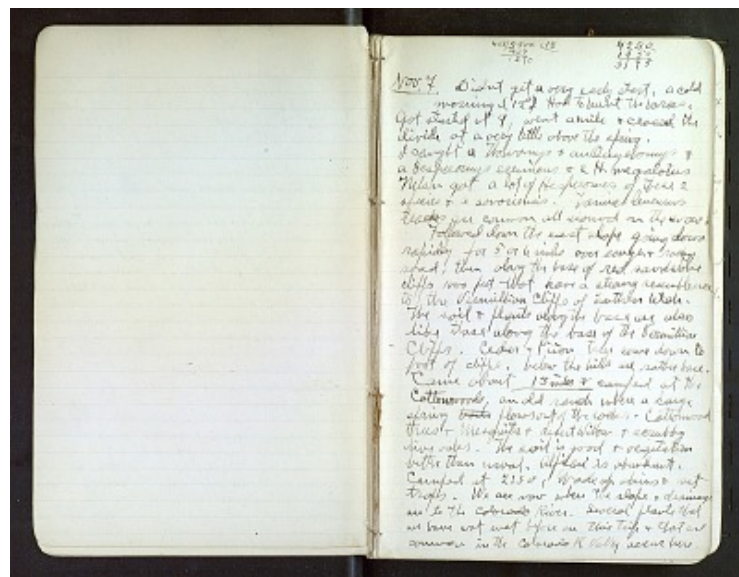
[[start page]]

403/5300 [[separating symbol]] 13

403
[[line indicating subtraction]]
1270

4250
1055
[[line indicating subtraction]]
3195

Nov. 7 Didnt get a very early start, a cold morning - (12°) Had to hunt the horses, Got started at 9, went a mile & crossed the divide at a very little above the spring. I caught a *Thomomys* & an *Onychomys* & a *Hesperomys eremicus* & 2 *H. megalotus*. Nelson got a lot of *Hesperomys* of these 2 species & a *sonoricus*. *Tamias leucurus* tracks are common all around on the snow. Followed down the east slope going down rapidly for 5 or 6 miles over rough & rocky road, then along the base of red sandstone cliffs 1000 feet that have a strong resemblance to the Vermillion Cliffs of Southern Utah. The soil & plants along the base are also like those along the base of the Vermillion Cliffs. Cedar & Piñon trees come down to foot of cliffs, below the hills are rather bare. Came about 13 miles & camped at the Cottonwoods, an old ranch where a large spring ~~boils~~ flows out of the rocks. Cottonwood trees & Mesquits & desert Willow & scrubby live oaks. The soil is good & vegetation better than usual. Alfalfa is abundant. Camped at 2:30, Made up skins & set traps. We are now where the slope & drainage are to the Colorado River. Several plants that we have not met before on this trip & that are common on the Colorado R. Valley occur here.



Bailey - California, Nevada, March 1891 - October 1891
Transcribed and Reviewed by Digital Volunteers
Extracted Apr-24-2024 07:23:58



Smithsonian Institution

Smithsonian Institution Archives

The mission of the Smithsonian is the increase and diffusion of knowledge - shaping the future by preserving our heritage, discovering new knowledge, and sharing our resources with the world. Founded in 1846, the Smithsonian is the world's largest museum and research complex, consisting of 19 museums and galleries, the National Zoological Park, and nine research facilities. Become an active part of our mission through the Transcription Center. Together, we are discovering secrets hidden deep inside our collections that illuminate our history and our world.

Join us!

The Transcription Center: <https://transcription.si.edu>

On Facebook: <https://www.facebook.com/SmithsonianTranscriptionCenter>

On Twitter: [@TranscribeSI](https://twitter.com/TranscribeSI)

Connect with the Smithsonian

Smithsonian Institution: www.si.edu

On Facebook: <https://www.facebook.com/Smithsonian>

On Twitter: [@smithsonian](https://twitter.com/smithsonian)