



Smithsonian Institution

Smithsonian Institution Archives

Bailey - California, Colorado, Kansas, October 1891 - November 1891

Extracted on Mar-29-2024 07:52:00

The Smithsonian Institution thanks all digital volunteers that transcribed and reviewed this material. Your work enriches Smithsonian collections, making them available to anyone with an interest in using them.

The Smithsonian Institution (the "Smithsonian") provides the content on this website (transcription.si.edu), other Smithsonian websites, and third-party sites on which it maintains a presence ("SI Websites") in support of its mission for the "increase and diffusion of knowledge." The Smithsonian invites visitors to use its online content for personal, educational and other non-commercial purposes. By using this website, you accept and agree to abide by the [following terms](#).

- If sharing the material in personal and educational contexts, please cite the Smithsonian Institution Archives as source of the content and the project title as provided at the top of the document. Include the accession number or collection name; when possible, link to the Smithsonian Institution Archives website.
- If you wish to use this material in a for-profit publication, exhibition, or online project, please contact Smithsonian Institution Archives or transcribe@si.edu

For more information on this project and related material, contact the Smithsonian Institution Archives. [See this project](#) and other collections in the Smithsonian Transcription Center.

[[blank page]]
[[end page]]
[[start page]]

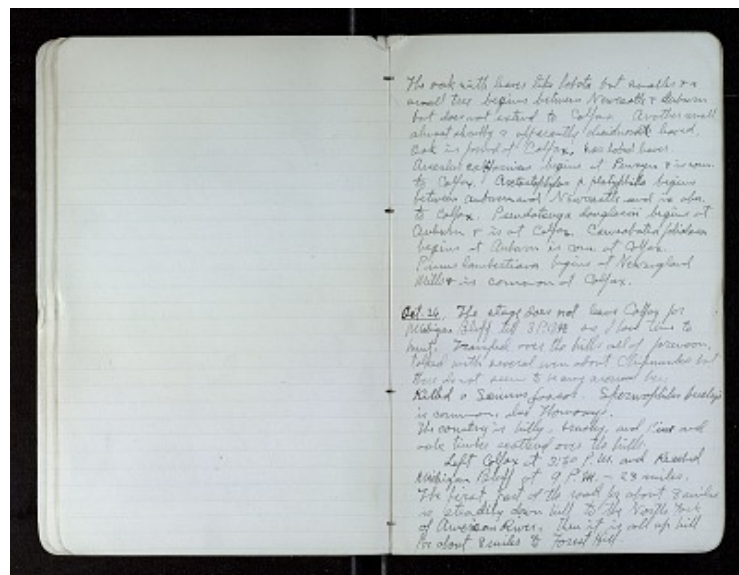
The oak with leaves like lobata but smaller & a small tree begins between Newcastle & Auburn but does not extend to Colfax. Another small, almost shrubby & apparently deciduous ~~I~~ leaved, oak is found at Colfax, has lobed leaves.

Aesculus californicus begins at Penryn & is com. to Colfax.
Arctostaphylos p. platyphilla begins between Auburn and Newcastle and is abn. to Colfax. Pseudotsuga douglassii begins at Auburn & is at Colfax. Chamaebatia foliolosa begins at Auburn is com. at Colfax.
Pinus lambertiana begins at Newengland Mills & is common at Colfax.

Oct. 26. The stage does not leave Colfax for Michigan Bluff till 3 P.M. so I had time to hunt. Tramped over the hills all of forenoon, talked with several men about Chipmunks but there do not seem to be any around here. Killed a Sciurus fessor. Spermophilus beecheyi is common, also Thomomys.

The country is hilly, brushy, and Pine and oak timber scattered over the hills.

Left Colfax at 3:30 P.M. and Reached Michigan Bluff at 9 P.M. - 23 miles. The first part of the road for about 8 miles is steadily down hill to the North Fork of American River. Then it is all up hill for about 8 miles to Forest Hill.



Bailey - California, Colorado, Kansas, October 1891 - November 1891
Transcribed and Reviewed by Digital Volunteers
Extracted Mar-29-2024 07:52:00



Smithsonian Institution

Smithsonian Institution Archives

The mission of the Smithsonian is the increase and diffusion of knowledge - shaping the future by preserving our heritage, discovering new knowledge, and sharing our resources with the world. Founded in 1846, the Smithsonian is the world's largest museum and research complex, consisting of 19 museums and galleries, the National Zoological Park, and nine research facilities. Become an active part of our mission through the Transcription Center. Together, we are discovering secrets hidden deep inside our collections that illuminate our history and our world.

Join us!

The Transcription Center: <https://transcription.si.edu>

On Facebook: <https://www.facebook.com/SmithsonianTranscriptionCenter>

On Twitter: [@TranscribeSI](https://twitter.com/TranscribeSI)

Connect with the Smithsonian

Smithsonian Institution: www.si.edu

On Facebook: <https://www.facebook.com/Smithsonian>

On Twitter: [@smithsonian](https://twitter.com/smithsonian)