



**Smithsonian Institution**

*Smithsonian Institution Archives*

## **Bailey, - Georgia, Kansas, Louisiana, Mississippi, Missouri, Texas, April 1892 - September 1892**

Extracted on Mar-29-2024 04:02:22

**The Smithsonian Institution thanks all digital volunteers that transcribed and reviewed this material. Your work enriches Smithsonian collections, making them available to anyone with an interest in using them.**

The Smithsonian Institution (the "Smithsonian") provides the content on this website ([transcription.si.edu](https://transcription.si.edu)), other Smithsonian websites, and third-party sites on which it maintains a presence ("SI Websites") in support of its mission for the "increase and diffusion of knowledge." The Smithsonian invites visitors to use its online content for personal, educational and other non-commercial purposes. By using this website, you accept and agree to abide by the [following terms](#).

- If sharing the material in personal and educational contexts, please cite the Smithsonian Institution Archives as source of the content and the project title as provided at the top of the document. Include the accession number or collection name; when possible, link to the Smithsonian Institution Archives website.
- If you wish to use this material in a for-profit publication, exhibition, or online project, please contact Smithsonian Institution Archives or [transcribe@si.edu](mailto:transcribe@si.edu)

For more information on this project and related material, contact the Smithsonian Institution Archives. [See this project](#) and other collections in the Smithsonian Transcription Center.

[[blank page]]  
[[end page]]  
[[start page]]

[[underlined]] To Savannah [[/underlined]]

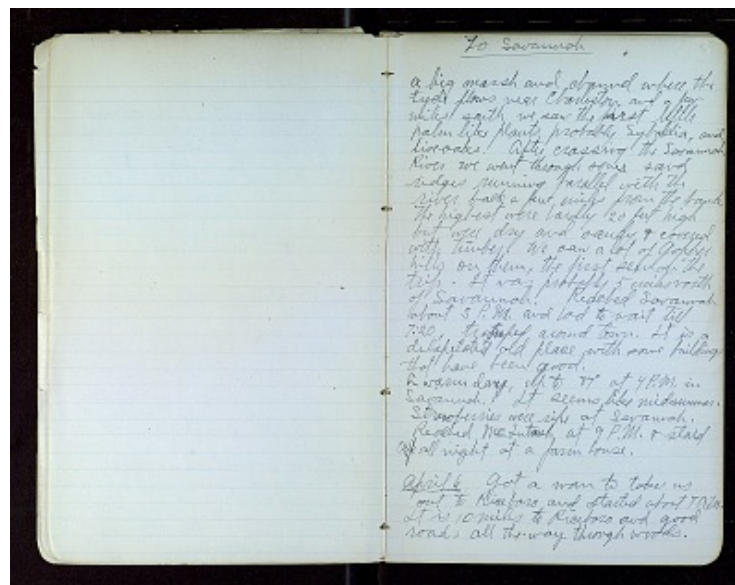
A big marsh and channel where the tyde flows near Charleston, and a few miles south we saw the first little palm like plants probably Sybaldia, and live oaks. After crossing the Savannah River we went through some sand ridges running parallel with the river back a few miles from the bank.

The highest were hardly 20 feet high but were dry and sandy & covered with timber. We saw a lot of Gopher hills on them, the first seen on the trip. It was probably 5 miles north of Savannah. Reached Savannah about 3 P.M. and had to wait till 7:20, tramped around town. It is a delapetated old place with some buildings that have been good.

A warm day, up to 87 [[degree symbol]] at 4 P.M. in Savannah. It seems like midsummer. Strawberries were ripe at Savannah.

Reached McIntosh at 9 P.M. & staid ~~up~~ all night at a farm house.

[[underlined]] April 6 [[/underlined]] Got a man to take us out to Riceboro and started about 7 A.M. It is 10 miles to Riceboro and good roads all the way through woods.



Bailey, - Georgia, Kansas, Louisiana, Mississippi, Missouri, Texas, April  
1892 - September 1892  
Transcribed and Reviewed by Digital Volunteers  
Extracted Mar-29-2024 04:02:22



## Smithsonian Institution

*Smithsonian Institution Archives*

The mission of the Smithsonian is the increase and diffusion of knowledge - shaping the future by preserving our heritage, discovering new knowledge, and sharing our resources with the world. Founded in 1846, the Smithsonian is the world's largest museum and research complex, consisting of 19 museums and galleries, the National Zoological Park, and nine research facilities. Become an active part of our mission through the Transcription Center. Together, we are discovering secrets hidden deep inside our collections that illuminate our history and our world.

Join us!

The Transcription Center: <https://transcription.si.edu>

On Facebook: <https://www.facebook.com/SmithsonianTranscriptionCenter>

On Twitter: [@TranscribeSI](https://twitter.com/TranscribeSI)

Connect with the Smithsonian

Smithsonian Institution: [www.si.edu](http://www.si.edu)

On Facebook: <https://www.facebook.com/Smithsonian>

On Twitter: [@smithsonian](https://twitter.com/smithsonian)