



**Smithsonian Institution**

*Smithsonian Institution Archives*

## **Bailey - Montana, Nevada, South Dakota, Wyoming, May 1894 - September 1894**

Extracted on Jul-07-2025 11:37:18

**The Smithsonian Institution thanks all digital volunteers that transcribed and reviewed this material. Your work enriches Smithsonian collections, making them available to anyone with an interest in using them.**

The Smithsonian Institution (the "Smithsonian") provides the content on this website ([transcription.si.edu](https://transcription.si.edu)), other Smithsonian websites, and third-party sites on which it maintains a presence ("SI Websites") in support of its mission for the "increase and diffusion of knowledge." The Smithsonian invites visitors to use its online content for personal, educational and other non-commercial purposes. By using this website, you accept and agree to abide by the [following terms](#).

- If sharing the material in personal and educational contexts, please cite the Smithsonian Institution Archives as source of the content and the project title as provided at the top of the document. Include the accession number or collection name; when possible, link to the Smithsonian Institution Archives website.
- If you wish to use this material in a for-profit publication, exhibition, or online project, please contact Smithsonian Institution Archives or [transcribe@si.edu](mailto:transcribe@si.edu)

For more information on this project and related material, contact the Smithsonian Institution Archives. [See this project](#) and other collections in the Smithsonian Transcription Center.

[[left page blank]]  
[[end page]]  
[[start page]]

Rosebud Agency & Pine Ridge

May 12 Caught 4 Geomys & a Perodipus & a Perognathus, All taken for the first time in Dakota.

Scared a Coyote out of a brush patch & missed him as he went over the hill.

May 13 Sunday. Found a Perognathus fasciatus in one trap & a P. flavescens in another. Left out the trap where the fasciatus was caught. & brought in the others. Have to be ready for stage at 8 in the morning.

May 14 Caught nothing, picked up the few traps left out & started for Valentine at 8 A.M.

Arrived at 4 P.M. 30 miles

Altitude at Valentine 2579, Half way House 2725, top of ridge between Half way House & Agency 2775.

Agency 2525, Creek at Agency 2475,

prairie a mile from creek 2700

A lot of ducks in lake at half way house.

Killed a teal & some longspurs

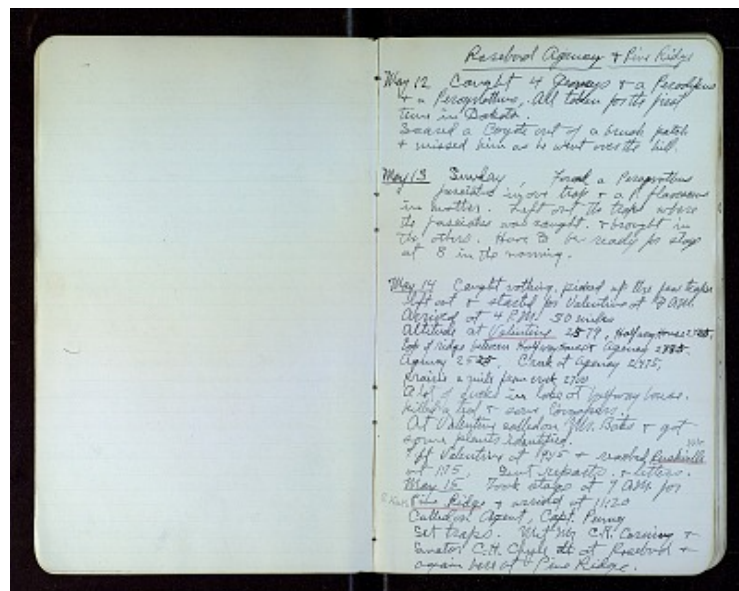
At Valentine called on Mr. Bates & got some plants identified.

Left Valentine at 9:15 & reached Rushville Neb. at 1:15, Sent reports. & letters.

May 15 Took stage at 7 A.M. for Pine Ridge & arrived at 11:20

Called on Agent, Capt. Penny

Set traps. Met Mr. C. R. Corning & Senator C.H. Chyle  
~~at Rosebud & again here at Pine Ridge.~~



Bailey - Montana, Nevada, South Dakota, Wyoming, May 1894 - September 1894  
Transcribed and Reviewed by Digital Volunteers  
Extracted Jul-07-2025 11:37:18



## Smithsonian Institution

*Smithsonian Institution Archives*

The mission of the Smithsonian is the increase and diffusion of knowledge - shaping the future by preserving our heritage, discovering new knowledge, and sharing our resources with the world. Founded in 1846, the Smithsonian is the world's largest museum and research complex, consisting of 19 museums and galleries, the National Zoological Park, and nine research facilities. Become an active part of our mission through the Transcription Center. Together, we are discovering secrets hidden deep inside our collections that illuminate our history and our world.

Join us!

The Transcription Center: <https://transcription.si.edu>

On Facebook: <https://www.facebook.com/SmithsonianTranscriptionCenter>

On Twitter: [@TranscribeSI](https://twitter.com/TranscribeSI)

Connect with the Smithsonian

Smithsonian Institution: [www.si.edu](http://www.si.edu)

On Facebook: <https://www.facebook.com/Smithsonian>

On Twitter: [@smithsonian](https://twitter.com/smithsonian)