



**Smithsonian Institution**

*Smithsonian Institution Archives*

## **Bailey - Montana, Nevada, South Dakota, Wyoming, May 1894 - September 1894**

Extracted on Apr-23-2024 11:43:40

**The Smithsonian Institution thanks all digital volunteers that transcribed and reviewed this material. Your work enriches Smithsonian collections, making them available to anyone with an interest in using them.**

The Smithsonian Institution (the "Smithsonian") provides the content on this website ([transcription.si.edu](https://transcription.si.edu)), other Smithsonian websites, and third-party sites on which it maintains a presence ("SI Websites") in support of its mission for the "increase and diffusion of knowledge." The Smithsonian invites visitors to use its online content for personal, educational and other non-commercial purposes. By using this website, you accept and agree to abide by the [following terms](#).

- If sharing the material in personal and educational contexts, please cite the Smithsonian Institution Archives as source of the content and the project title as provided at the top of the document. Include the accession number or collection name; when possible, link to the Smithsonian Institution Archives website.
- If you wish to use this material in a for-profit publication, exhibition, or online project, please contact Smithsonian Institution Archives or [transcribe@si.edu](mailto:transcribe@si.edu)

For more information on this project and related material, contact the Smithsonian Institution Archives. [See this project](#) and other collections in the Smithsonian Transcription Center.

[[left page blank]]  
[[end page]]  
[[start page]]

[[underlined]]Newcastle[[/underlined]]

The R.R. follows around the edge of the Black Hills, just cutting through a few points of pines. A few detached series of high, pine covered buttes are seen to the west. The road runs through grassy valleys most of the way. Cactus & sage brush are conspicuous features north of Ardmore.

Edgmont would be a good place to stop & see if *Geomys* or *Thomomys* inhabits the sandy bottoms of the Cheyenne R.

Got my mail. Saw Elam Blain, who kept my horses & made arrangements to have the wagon brought in in morning for some repairs. Hunted & set traps up the creek canon and over the mountain side.

Killed nothing. Cold & raw. Saw but few birds.

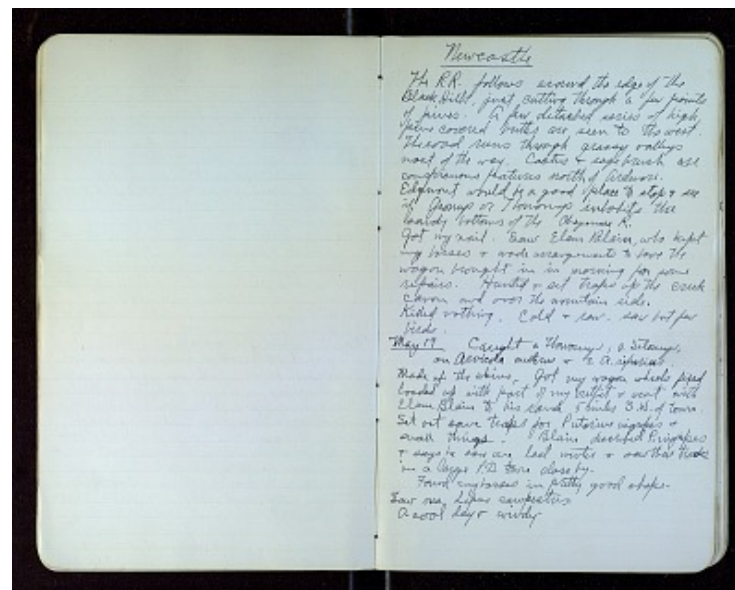
[[underlined]]May 19[[/underlined]] Caught a *Thomomys*, a *Sitomys*, an *Arvicola austerus* & 2 *A. riparius*.

Made up the skins. Got my wagon wheels fixed loaded up with part of my outfit & went with Elam Blain to his ranch 5 miles S.W. of town. Set out some traps for *Putorius nigripes* & small things. Blain described *P. nigripes* & says he saw one last winter & saw their tracks in a large P.D. town close by.

Found my horses in pretty good shape.

Saw one *Lepus campestris*.

A cool day & windy.



Bailey - Montana, Nevada, South Dakota, Wyoming, May 1894 - September 1894

Transcribed and Reviewed by Digital Volunteers  
Extracted Apr-23-2024 11:43:40



## Smithsonian Institution

*Smithsonian Institution Archives*

The mission of the Smithsonian is the increase and diffusion of knowledge - shaping the future by preserving our heritage, discovering new knowledge, and sharing our resources with the world. Founded in 1846, the Smithsonian is the world's largest museum and research complex, consisting of 19 museums and galleries, the National Zoological Park, and nine research facilities. Become an active part of our mission through the Transcription Center. Together, we are discovering secrets hidden deep inside our collections that illuminate our history and our world.

Join us!

The Transcription Center: <https://transcription.si.edu>

On Facebook: <https://www.facebook.com/SmithsonianTranscriptionCenter>

On Twitter: [@TranscribeSI](https://twitter.com/TranscribeSI)

Connect with the Smithsonian

Smithsonian Institution: [www.si.edu](http://www.si.edu)

On Facebook: <https://www.facebook.com/Smithsonian>

On Twitter: [@smithsonian](https://twitter.com/smithsonian)