



Smithsonian Institution

Smithsonian Institution Archives

Bailey - Montana, Nevada, South Dakota, Wyoming, May 1894 - September 1894

Extracted on Apr-16-2024 12:25:08

The Smithsonian Institution thanks all digital volunteers that transcribed and reviewed this material. Your work enriches Smithsonian collections, making them available to anyone with an interest in using them.

The Smithsonian Institution (the "Smithsonian") provides the content on this website (transcription.si.edu), other Smithsonian websites, and third-party sites on which it maintains a presence ("SI Websites") in support of its mission for the "increase and diffusion of knowledge." The Smithsonian invites visitors to use its online content for personal, educational and other non-commercial purposes. By using this website, you accept and agree to abide by the [following terms](#).

- If sharing the material in personal and educational contexts, please cite the Smithsonian Institution Archives as source of the content and the project title as provided at the top of the document. Include the accession number or collection name; when possible, link to the Smithsonian Institution Archives website.
- If you wish to use this material in a for-profit publication, exhibition, or online project, please contact Smithsonian Institution Archives or transcribe@si.edu

For more information on this project and related material, contact the Smithsonian Institution Archives. [See this project](#) and other collections in the Smithsonian Transcription Center.

[[left page blank]]
[[end page]]
[[start page]]

Belt to Great Falls

East of Cora is a very interesting dike running for 4 miles, or as far as we could see, along the crest of Rocky Ridge. It is a crystalline rock, apparently of volcanic origin, is in an upright position. a strip about 8 feet thick & unknown depth - breaks in irregular horizontal prisms.

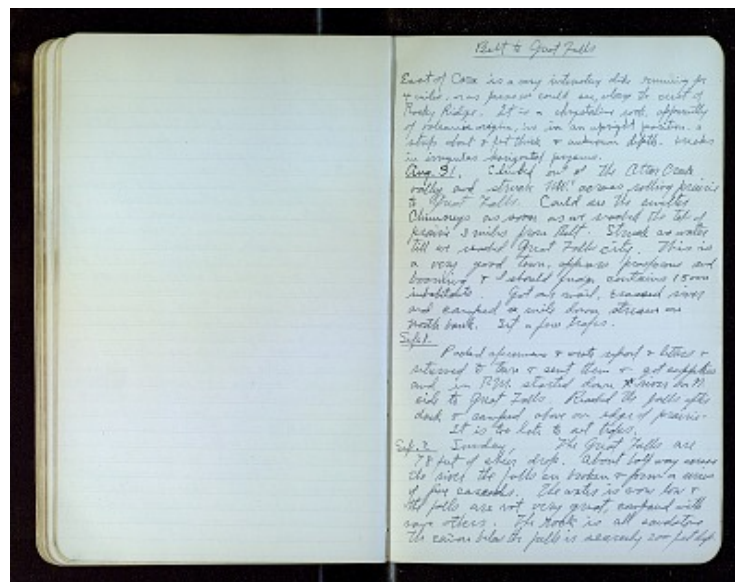
Aug. 31. Climbed out of the Otter Creek valley and struck N.W. across rolling prairie to Great Falls. Could see the smelter Chimneys as soon as we reached the top of prairie 3 miles from Belt. Struck no water till we reached Great Falls city. This is a very good town, appears prosperous and booming & I should judge contains 15000 inhabitants. Got our mail, crossed river and camped a mile down stream on North bank. Set a few traps.

Sep. 1.

Packed specimens & wrote report & letters & returned to town & sent them & got supplies and in P.M. started down ~~the~~ P river on N. side to Great Falls. Reached the falls after dark & camped above on edge of prairie.

It is too late to set traps.

Sep. 2 Sunday, The Great Falls are 78 feet of sheer drop. About half way across the river the falls are broken & form a series of five cascades. The water is now low & the falls are not very great, compared with some others. The rock is all sandstone the cañon below the falls is scarcely 200 feet deep.



Bailey - Montana, Nevada, South Dakota, Wyoming, May 1894 - September 1894

Transcribed and Reviewed by Digital Volunteers

Extracted Apr-16-2024 12:25:08



Smithsonian Institution

Smithsonian Institution Archives

The mission of the Smithsonian is the increase and diffusion of knowledge - shaping the future by preserving our heritage, discovering new knowledge, and sharing our resources with the world. Founded in 1846, the Smithsonian is the world's largest museum and research complex, consisting of 19 museums and galleries, the National Zoological Park, and nine research facilities. Become an active part of our mission through the Transcription Center. Together, we are discovering secrets hidden deep inside our collections that illuminate our history and our world.

Join us!

The Transcription Center: <https://transcription.si.edu>

On Facebook: <https://www.facebook.com/SmithsonianTranscriptionCenter>

On Twitter: [@TranscribeSI](https://twitter.com/TranscribeSI)

Connect with the Smithsonian

Smithsonian Institution: www.si.edu

On Facebook: <https://www.facebook.com/Smithsonian>

On Twitter: [@smithsonian](https://twitter.com/smithsonian)