



**Smithsonian Institution**

*Smithsonian Institution Archives*

## **Vernon Bailey with E. A. Preble - May to September 1896**

Extracted on Mar-28-2024 10:29:17

**The Smithsonian Institution thanks all digital volunteers that transcribed and reviewed this material. Your work enriches Smithsonian collections, making them available to anyone with an interest in using them.**

The Smithsonian Institution (the "Smithsonian") provides the content on this website ([transcription.si.edu](https://transcription.si.edu)), other Smithsonian websites, and third-party sites on which it maintains a presence ("SI Websites") in support of its mission for the "increase and diffusion of knowledge." The Smithsonian invites visitors to use its online content for personal, educational and other non-commercial purposes. By using this website, you accept and agree to abide by the [following terms](#).

- If sharing the material in personal and educational contexts, please cite the Smithsonian Institution Archives as source of the content and the project title as provided at the top of the document. Include the accession number or collection name; when possible, link to the Smithsonian Institution Archives website.
- If you wish to use this material in a for-profit publication, exhibition, or online project, please contact Smithsonian Institution Archives or [transcribe@si.edu](mailto:transcribe@si.edu)

For more information on this project and related material, contact the Smithsonian Institution Archives. [See this project](#) and other collections in the Smithsonian Transcription Center.

[[left page blank]]  
[[end page]]  
[[start page]]

[[underline]]Huntington[[/underline]]

cross more sagebrush plains. At Mountain Home there are some irrigated patches, but the country looks desolate.

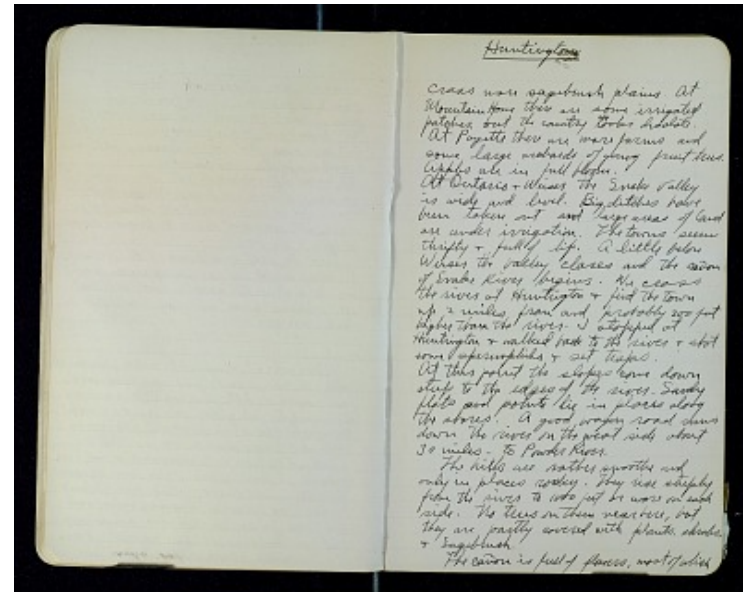
At Payette there are more farms and some large orchards of young fruit trees. Apples are in full bloom.

At Ontario & Weiser the Snake Valley is wide and level. Big ditches have been taken out and large areas of land are under irrigation. The towns seem thrifty & full of life. A little below Weiser the valley closes and the cañon of Snake River begins. We cross the river at Huntington & find the town up 2 miles from and probably 200 feet higher than the river. I stopped at Huntington & walked back to the river & shot some spermophiles & set traps.

At this point the slopes come down steep to the edges of the river. Sandy flats and points lie in places along the shores. A good wagon road runs down the river on the west side about 30 miles - to Powder River.

The hills are rather smooth and only in places rocky. They rise steeply from the river to 1000 feet or more on each side. No trees on them near here, but they are partly covered with plants, shrubs, & sagebrush.

The cañon is full of flowers, most of which



Vernon Bailey with E. A. Preble - May to September 1896  
Transcribed and Reviewed by Digital Volunteers  
Extracted Mar-28-2024 10:29:17



## Smithsonian Institution

*Smithsonian Institution Archives*

The mission of the Smithsonian is the increase and diffusion of knowledge - shaping the future by preserving our heritage, discovering new knowledge, and sharing our resources with the world. Founded in 1846, the Smithsonian is the world's largest museum and research complex, consisting of 19 museums and galleries, the National Zoological Park, and nine research facilities. Become an active part of our mission through the Transcription Center. Together, we are discovering secrets hidden deep inside our collections that illuminate our history and our world.

Join us!

The Transcription Center: <https://transcription.si.edu>

On Facebook: <https://www.facebook.com/SmithsonianTranscriptionCenter>

On Twitter: [@TranscribeSI](https://twitter.com/TranscribeSI)

Connect with the Smithsonian

Smithsonian Institution: [www.si.edu](http://www.si.edu)

On Facebook: <https://www.facebook.com/Smithsonian>

On Twitter: [@smithsonian](https://twitter.com/smithsonian)