



**Smithsonian Institution**

*Smithsonian Institution Archives*

## **Vernon Bailey with E. A. Preble - May to September 1896**

Extracted on Mar-29-2024 01:56:40

**The Smithsonian Institution thanks all digital volunteers that transcribed and reviewed this material. Your work enriches Smithsonian collections, making them available to anyone with an interest in using them.**

The Smithsonian Institution (the "Smithsonian") provides the content on this website ([transcription.si.edu](https://transcription.si.edu)), other Smithsonian websites, and third-party sites on which it maintains a presence ("SI Websites") in support of its mission for the "increase and diffusion of knowledge." The Smithsonian invites visitors to use its online content for personal, educational and other non-commercial purposes. By using this website, you accept and agree to abide by the [following terms](#).

- If sharing the material in personal and educational contexts, please cite the Smithsonian Institution Archives as source of the content and the project title as provided at the top of the document. Include the accession number or collection name; when possible, link to the Smithsonian Institution Archives website.
- If you wish to use this material in a for-profit publication, exhibition, or online project, please contact Smithsonian Institution Archives or [transcribe@si.edu](mailto:transcribe@si.edu)

For more information on this project and related material, contact the Smithsonian Institution Archives. [See this project](#) and other collections in the Smithsonian Transcription Center.

[[left page blank]]  
[[end page]]  
[[start page]]

[[underlined]]La Grande[[/underlined]]

are strange to me.

Placer mining is carried on in places all along the river banks. Water wheels turned by the current lift the water to wash gold from the gravel & to irrigate little patches of ground.

This spring has been unusually rainy & crops are growing without much irrigating.

There are several stores & 2 hotels at Huntington.

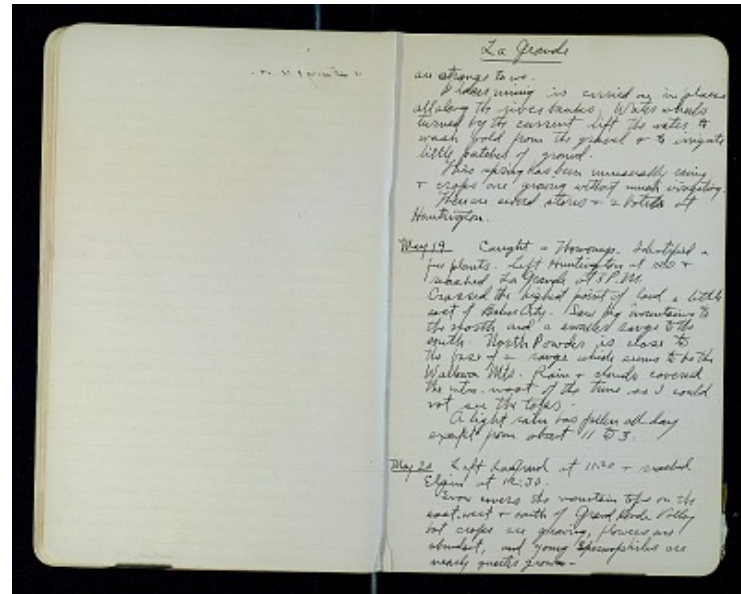
[[underlined]]May 19[[/underlined]] Caught a Thomomys. Identified a few plants. Left Huntington at 1:20 & reached La Grande at 5 P.M.

Crossed the highest point of land a little east of Baker City. Saw big mountains to the north and a smaller range to the south. North Powder is close to the base of a range which seems to be the Wallowa Mts. Rain & clouds covered the mts. most of the time so I could not see the tops.

A light rain has fallen all day except from about 11 to 3.

[[underlined]]May 20[[/underlined]] Left La Grand at 11:20 & reached Elgin at 12:30.

Snow covers the mountain tops on the east, west & south of Grand Ronde Valley but crops are growing, flowers are abundant, and young Spermatophytes are nearly quarter grown.



Vernon Bailey with E. A. Preble - May to September 1896  
Transcribed and Reviewed by Digital Volunteers  
Extracted Mar-29-2024 01:56:40



## Smithsonian Institution

*Smithsonian Institution Archives*

The mission of the Smithsonian is the increase and diffusion of knowledge - shaping the future by preserving our heritage, discovering new knowledge, and sharing our resources with the world. Founded in 1846, the Smithsonian is the world's largest museum and research complex, consisting of 19 museums and galleries, the National Zoological Park, and nine research facilities. Become an active part of our mission through the Transcription Center. Together, we are discovering secrets hidden deep inside our collections that illuminate our history and our world.

Join us!

The Transcription Center: <https://transcription.si.edu>

On Facebook: <https://www.facebook.com/SmithsonianTranscriptionCenter>

On Twitter: [@TranscribeSI](https://twitter.com/TranscribeSI)

Connect with the Smithsonian

Smithsonian Institution: [www.si.edu](http://www.si.edu)

On Facebook: <https://www.facebook.com/Smithsonian>

On Twitter: [@smithsonian](https://twitter.com/smithsonian)