



**Smithsonian Institution**

*Smithsonian Institution Archives*

## **Bailey - California, Oregon, Utah, Washington, May - July 1897**

Extracted on Apr-17-2024 05:55:12

**The Smithsonian Institution thanks all digital volunteers that transcribed and reviewed this material. Your work enriches Smithsonian collections, making them available to anyone with an interest in using them.**

The Smithsonian Institution (the "Smithsonian") provides the content on this website ([transcription.si.edu](https://transcription.si.edu)), other Smithsonian websites, and third-party sites on which it maintains a presence ("SI Websites") in support of its mission for the "increase and diffusion of knowledge." The Smithsonian invites visitors to use its online content for personal, educational and other non-commercial purposes. By using this website, you accept and agree to abide by the [following terms](#).

- If sharing the material in personal and educational contexts, please cite the Smithsonian Institution Archives as source of the content and the project title as provided at the top of the document. Include the accession number or collection name; when possible, link to the Smithsonian Institution Archives website.
- If you wish to use this material in a for-profit publication, exhibition, or online project, please contact Smithsonian Institution Archives or [transcribe@si.edu](mailto:transcribe@si.edu)

For more information on this project and related material, contact the Smithsonian Institution Archives. [See this project](#) and other collections in the Smithsonian Transcription Center.

[[blank page]]  
[[end page]]  
[[begin page]]

[[underline]] May 22 [[/underline]], 1897

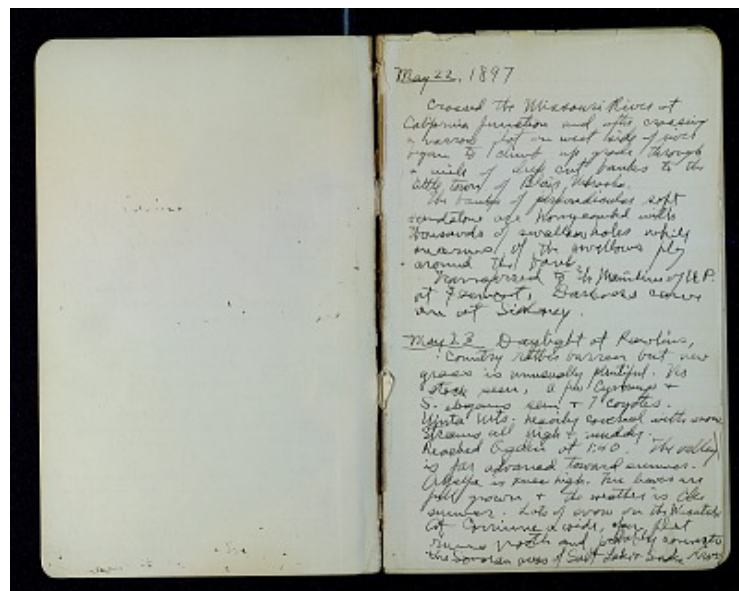
Crossed the Missouri River at California Junction and after crossing a narrow flat on west side of river began to climb up grade through a mile of deep cut banks to the little town of Blair, Nebraska.

The banks of perpendicular soft sandstone are honeycombed with thousands of swallow holes while swarms of the swallows fly around the bank.

Transferred to the mainline of U.P. at Fremont. Darkness came on at Sidney.

[[underline]] May 23 [[/underline]] Daylight at Rawlins,

Country rather barren but new grass is unusually plentiful. No stock seen, a few *Cynomys* and *S. elegans* seen and 7 coyotes. Uinta Mts. heavily covered with snow. Streams all high and muddy. Reached Ogden at 1:40. The valley is far advanced toward summer. Alfalfa is knee high. The leaves are full grown & the weather is like summer. Lots of snow on the Wasatch. At Corrinne a wide open flat runs north and probably connects the Sonoran areas of Salt Lake & Snake River.



Bailey - California, Oregon, Utah, Washington, May - July 1897  
Transcribed and Reviewed by Digital Volunteers  
Extracted Apr-17-2024 05:55:12



## Smithsonian Institution

*Smithsonian Institution Archives*

The mission of the Smithsonian is the increase and diffusion of knowledge - shaping the future by preserving our heritage, discovering new knowledge, and sharing our resources with the world. Founded in 1846, the Smithsonian is the world's largest museum and research complex, consisting of 19 museums and galleries, the National Zoological Park, and nine research facilities. Become an active part of our mission through the Transcription Center. Together, we are discovering secrets hidden deep inside our collections that illuminate our history and our world.

Join us!

The Transcription Center: <https://transcription.si.edu>

On Facebook: <https://www.facebook.com/SmithsonianTranscriptionCenter>

On Twitter: [@TranscribeSI](https://twitter.com/TranscribeSI)

Connect with the Smithsonian

Smithsonian Institution: [www.si.edu](http://www.si.edu)

On Facebook: <https://www.facebook.com/Smithsonian>

On Twitter: [@smithsonian](https://twitter.com/smithsonian)