



**Smithsonian Institution**

*Smithsonian Institution Archives*

## **Bailey - California, Oregon, Utah, Washington, May - July 1897**

Extracted on Apr-23-2024 07:47:57

**The Smithsonian Institution thanks all digital volunteers that transcribed and reviewed this material. Your work enriches Smithsonian collections, making them available to anyone with an interest in using them.**

The Smithsonian Institution (the "Smithsonian") provides the content on this website ([transcription.si.edu](https://transcription.si.edu)), other Smithsonian websites, and third-party sites on which it maintains a presence ("SI Websites") in support of its mission for the "increase and diffusion of knowledge." The Smithsonian invites visitors to use its online content for personal, educational and other non-commercial purposes. By using this website, you accept and agree to abide by the [following terms](#).

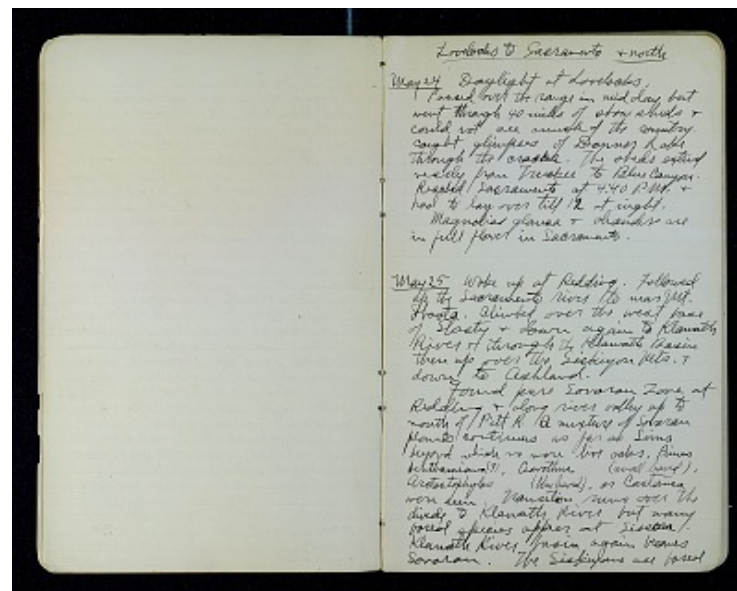
- If sharing the material in personal and educational contexts, please cite the Smithsonian Institution Archives as source of the content and the project title as provided at the top of the document. Include the accession number or collection name; when possible, link to the Smithsonian Institution Archives website.
- If you wish to use this material in a for-profit publication, exhibition, or online project, please contact Smithsonian Institution Archives or [transcribe@si.edu](mailto:transcribe@si.edu)

For more information on this project and related material, contact the Smithsonian Institution Archives. [See this project](#) and other collections in the Smithsonian Transcription Center.

[[blank page]]  
[[end page]]  
[[start page]]

[[underlined]] Lovelocks to Sacramento & north May 24 [[/underlined]]  
Daylight at Lovelocks. Passed over the range in mid day but went through 40 miles of snow sheds & could not see much of the country, caught glimpses of Donner Lake through the cracks. The sheds extend nearly from Truckee to Blue Canyon. Reached Sacramento at 4:40 P.M. & had to lay over till 12 at night.  
Magnolia glauca & oleanders are in full flower in Sacramento.

[[underlined]] May 25 [[/underlined]] Woke up at Redding. Followed up the Sacramento river to near Mt. Shasta. Climbed over the west base of Shasty & down again to Klamath River & through the Klamath Basin then up over the Siskiyou Mts. & down to Ashland.  
Found pure Sonoran Zone at Redding & along river valley up to mouth of Pitt R. A mixture of Sonoran plants continues as far as Sims beyond which no more live oaks, Pinus benthamiana (?), Ceanothus (small leaved), Arctostaphylos (blue leaved)], or Castanea were seen. Transition runs over the divide to Klamath River but many boreal species appear at Sisson. Klamath River basin again becomes Sonoran. The Siskiyou are boreal



Bailey - California, Oregon, Utah, Washington, May - July 1897  
Transcribed and Reviewed by Digital Volunteers  
Extracted Apr-23-2024 07:47:57



## Smithsonian Institution

*Smithsonian Institution Archives*

The mission of the Smithsonian is the increase and diffusion of knowledge - shaping the future by preserving our heritage, discovering new knowledge, and sharing our resources with the world. Founded in 1846, the Smithsonian is the world's largest museum and research complex, consisting of 19 museums and galleries, the National Zoological Park, and nine research facilities. Become an active part of our mission through the Transcription Center. Together, we are discovering secrets hidden deep inside our collections that illuminate our history and our world.

Join us!

The Transcription Center: <https://transcription.si.edu>

On Facebook: <https://www.facebook.com/SmithsonianTranscriptionCenter>

On Twitter: [@TranscribeSI](https://twitter.com/TranscribeSI)

Connect with the Smithsonian

Smithsonian Institution: [www.si.edu](http://www.si.edu)

On Facebook: <https://www.facebook.com/Smithsonian>

On Twitter: [@smithsonian](https://twitter.com/smithsonian)