



Smithsonian Institution

Smithsonian Institution Archives

Bailey - California, Oregon, Utah, Washington, May - July 1897

Extracted on Apr-19-2024 06:28:05

The Smithsonian Institution thanks all digital volunteers that transcribed and reviewed this material. Your work enriches Smithsonian collections, making them available to anyone with an interest in using them.

The Smithsonian Institution (the "Smithsonian") provides the content on this website (transcription.si.edu), other Smithsonian websites, and third-party sites on which it maintains a presence ("SI Websites") in support of its mission for the "increase and diffusion of knowledge." The Smithsonian invites visitors to use its online content for personal, educational and other non-commercial purposes. By using this website, you accept and agree to abide by the [following terms](#).

- If sharing the material in personal and educational contexts, please cite the Smithsonian Institution Archives as source of the content and the project title as provided at the top of the document. Include the accession number or collection name; when possible, link to the Smithsonian Institution Archives website.
- If you wish to use this material in a for-profit publication, exhibition, or online project, please contact Smithsonian Institution Archives or transcribe@si.edu

For more information on this project and related material, contact the Smithsonian Institution Archives. [See this project](#) and other collections in the Smithsonian Transcription Center.

[[blank page]]
[[end page]]
[[start page]]

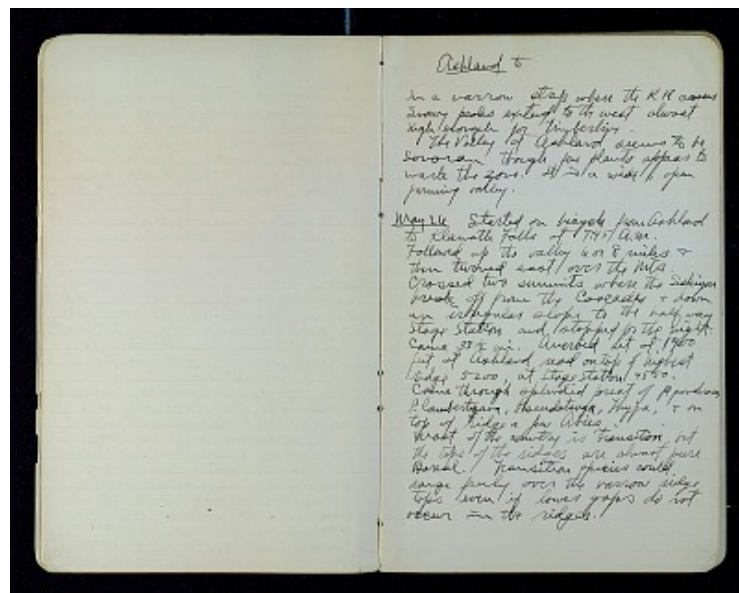
[[underlined]] Ashland [[/underlined]] to

in a narrow strip where the R R crosses. Snowy peaks extend to the west almost high enough for timberline.

The Valley at Ashland seems to be Sonoran though few plants appear to mark the zone. It is a wide, open farming valley.

[[underlined]] May 26 [[/underlined]] Started on bicycle from Ashland to Klamath Falls at 7:45 A.M. Followed up the valley 6 or 8 miles & then turned east over the Mts. Crossed two summits where the Siskiyou break off from the Cascades & down an irregular slope to the half way Stage Station and stopped for the night. Came 33 1/2 mi. Aneroid set at 1900 feet at Ashland read on top of highest ridge 5200, at Stage Station 4550. Came through splendid forest of *P. ponderosa*, *P. lambertiana*, *Pseudotsuga*, *Thyja*, & on top of ridge a few *Abies*.

Most of the country is Transition, but the tops of the ridges are almost pure Boreal. Transition species could range freely over the narrow ridge tops even if lower gaps do not occur in the ridges.



Bailey - California, Oregon, Utah, Washington, May - July 1897
Transcribed and Reviewed by Digital Volunteers
Extracted Apr-19-2024 06:28:05



Smithsonian Institution

Smithsonian Institution Archives

The mission of the Smithsonian is the increase and diffusion of knowledge - shaping the future by preserving our heritage, discovering new knowledge, and sharing our resources with the world. Founded in 1846, the Smithsonian is the world's largest museum and research complex, consisting of 19 museums and galleries, the National Zoological Park, and nine research facilities. Become an active part of our mission through the Transcription Center. Together, we are discovering secrets hidden deep inside our collections that illuminate our history and our world.

Join us!

The Transcription Center: <https://transcription.si.edu>

On Facebook: <https://www.facebook.com/SmithsonianTranscriptionCenter>

On Twitter: [@TranscribeSI](https://twitter.com/TranscribeSI)

Connect with the Smithsonian

Smithsonian Institution: www.si.edu

On Facebook: <https://www.facebook.com/Smithsonian>

On Twitter: [@smithsonian](https://twitter.com/smithsonian)