



**Smithsonian Institution**

*Smithsonian Institution Archives*

## **Bailey - California, Oregon, Utah, Washington, May - July 1897**

Extracted on Mar-29-2024 04:01:47

**The Smithsonian Institution thanks all digital volunteers that transcribed and reviewed this material. Your work enriches Smithsonian collections, making them available to anyone with an interest in using them.**

The Smithsonian Institution (the "Smithsonian") provides the content on this website ([transcription.si.edu](https://transcription.si.edu)), other Smithsonian websites, and third-party sites on which it maintains a presence ("SI Websites") in support of its mission for the "increase and diffusion of knowledge." The Smithsonian invites visitors to use its online content for personal, educational and other non-commercial purposes. By using this website, you accept and agree to abide by the [following terms](#).

- If sharing the material in personal and educational contexts, please cite the Smithsonian Institution Archives as source of the content and the project title as provided at the top of the document. Include the accession number or collection name; when possible, link to the Smithsonian Institution Archives website.
- If you wish to use this material in a for-profit publication, exhibition, or online project, please contact Smithsonian Institution Archives or [transcribe@si.edu](mailto:transcribe@si.edu)

For more information on this project and related material, contact the Smithsonian Institution Archives. [See this project](#) and other collections in the Smithsonian Transcription Center.

[[left page blank]]  
[[end page]]  
[[start right page]]

[[underlined]] To Klamath Falls [[/underlined]]

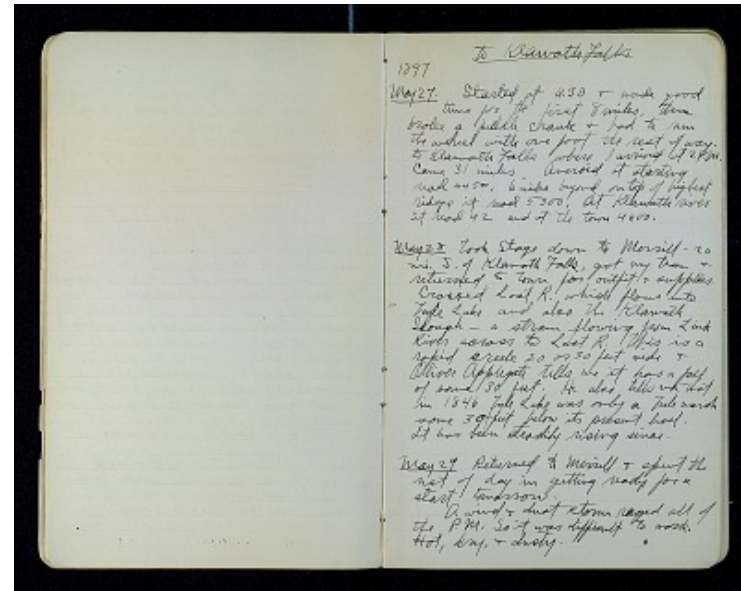
1897

[[underlined]] May 27 [[/underlined]] Started at 6:30 & made good time for the first 8 miles, then broke a peddle crank & had to run the wheel with one foot the rest of way to Klamath Falls where I arrived at 2 P.M. Came 31 miles. Aneroid at starting read 4450, 6 miles beyond on top of highest ridge it read 5300, at Klamath river it read 42 and at the town 4600.

[[underlined]] May 28 [[/underlined]] Took stage down to Morrill - 20 mi. S. of Klamath Falls, got my team & returned to town for outfit & supplies. Crossed Lost R. which flows into Tule Lake and also the Klamath Slough - a stream flowing from Link River across to Lost R. This is a rapid creek 20 or 30 feet wide & Oliver Applegate tells me it has a fall of some 30 feet. He also tells me that in 1846 Tule Lake was only a Tule marsh some 30 feet below its present level. It has been steadily rising since.

[[underlined]] May 29 [[/underlined]] Returned to Morrill & spent the rest of day in getting ready for a start tomorrow.

A wind & dust storm raged all of the P.M. So it was difficult to work. Hot, dry & dusty.



Bailey - California, Oregon, Utah, Washington, May - July 1897  
Transcribed and Reviewed by Digital Volunteers  
Extracted Mar-29-2024 04:01:47



## Smithsonian Institution

*Smithsonian Institution Archives*

The mission of the Smithsonian is the increase and diffusion of knowledge - shaping the future by preserving our heritage, discovering new knowledge, and sharing our resources with the world. Founded in 1846, the Smithsonian is the world's largest museum and research complex, consisting of 19 museums and galleries, the National Zoological Park, and nine research facilities. Become an active part of our mission through the Transcription Center. Together, we are discovering secrets hidden deep inside our collections that illuminate our history and our world.

Join us!

The Transcription Center: <https://transcription.si.edu>

On Facebook: <https://www.facebook.com/SmithsonianTranscriptionCenter>

On Twitter: [@TranscribeSI](https://twitter.com/TranscribeSI)

Connect with the Smithsonian

Smithsonian Institution: [www.si.edu](http://www.si.edu)

On Facebook: <https://www.facebook.com/Smithsonian>

On Twitter: [@smithsonian](https://twitter.com/smithsonian)