



Smithsonian Institution

Smithsonian Institution Archives

Bailey - Nevada, etc., May - July 1898

Extracted on Apr-19-2024 02:26:10

The Smithsonian Institution thanks all digital volunteers that transcribed and reviewed this material. Your work enriches Smithsonian collections, making them available to anyone with an interest in using them.

The Smithsonian Institution (the "Smithsonian") provides the content on this website (transcription.si.edu), other Smithsonian websites, and third-party sites on which it maintains a presence ("SI Websites") in support of its mission for the "increase and diffusion of knowledge." The Smithsonian invites visitors to use its online content for personal, educational and other non-commercial purposes. By using this website, you accept and agree to abide by the [following terms](#).

- If sharing the material in personal and educational contexts, please cite the Smithsonian Institution Archives as source of the content and the project title as provided at the top of the document. Include the accession number or collection name; when possible, link to the Smithsonian Institution Archives website.
- If you wish to use this material in a for-profit publication, exhibition, or online project, please contact Smithsonian Institution Archives or transcribe@si.edu

For more information on this project and related material, contact the Smithsonian Institution Archives. [See this project](#) and other collections in the Smithsonian Transcription Center.

[[left page blank]]
[[end page]]
[[start page]]

[[underlined]] Wadsworth, [[/underlined]] Nev.

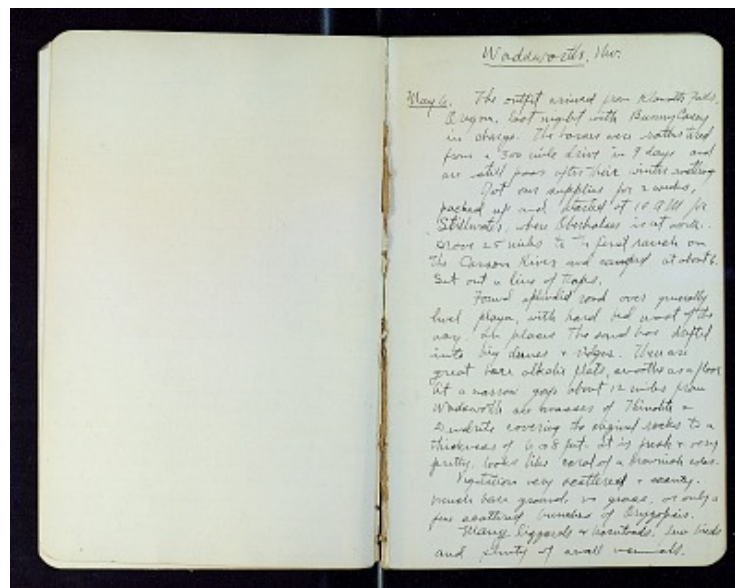
[[underlined]] May 6. [[/underlined]] The outfit arrived from Klamath Falls, Oregon, last night with Bunny Casey in charge. The horses were rather tired from a 300 mile drive in 9 days and are still poor after their winter rustling.

Got our supplies for 2 weeks, packed up and started at 10 AM for Stillwater, where Oberhalser is at work. Drove 25 miles to the first ranch on the Carson River and camped at about 6. Set out a line of traps.

Found splendid road over generally level playa, with hard bed most of the way. In places the sand has drifted into big dunes & ridges. There are great bare alkali flats, smooth as a floor. At a narrow gap about 12 miles from Wadsworth are masses of Thinolite & Dendrite covering the original rocks to a thickness of 6 or 8 feet. It is fresh & very pretty, looks like coral of a brownish color.

Vegetation very scattered & scanty. Much bare ground, no grass, or only a few scattered bunches of *Oryzopsis*.

Many lizzards & hornfrogs, few birds and plenty of small mammals.



Bailey - Nevada, etc., May - July 1898
Transcribed and Reviewed by Digital Volunteers
Extracted Apr-19-2024 02:26:10



Smithsonian Institution

Smithsonian Institution Archives

The mission of the Smithsonian is the increase and diffusion of knowledge - shaping the future by preserving our heritage, discovering new knowledge, and sharing our resources with the world. Founded in 1846, the Smithsonian is the world's largest museum and research complex, consisting of 19 museums and galleries, the National Zoological Park, and nine research facilities. Become an active part of our mission through the Transcription Center. Together, we are discovering secrets hidden deep inside our collections that illuminate our history and our world.

Join us!

The Transcription Center: <https://transcription.si.edu>

On Facebook: <https://www.facebook.com/SmithsonianTranscriptionCenter>

On Twitter: [@TranscribeSI](https://twitter.com/TranscribeSI)

Connect with the Smithsonian

Smithsonian Institution: www.si.edu

On Facebook: <https://www.facebook.com/Smithsonian>

On Twitter: [@smithsonian](https://twitter.com/smithsonian)