



**Smithsonian Institution**

*Smithsonian Institution Archives*

## **Bailey - Nevada, etc., May - July 1898**

Extracted on Mar-29-2024 05:20:36

**The Smithsonian Institution thanks all digital volunteers that transcribed and reviewed this material. Your work enriches Smithsonian collections, making them available to anyone with an interest in using them.**

The Smithsonian Institution (the "Smithsonian") provides the content on this website ([transcription.si.edu](https://transcription.si.edu)), other Smithsonian websites, and third-party sites on which it maintains a presence ("SI Websites") in support of its mission for the "increase and diffusion of knowledge." The Smithsonian invites visitors to use its online content for personal, educational and other non-commercial purposes. By using this website, you accept and agree to abide by the [following terms](#).

- If sharing the material in personal and educational contexts, please cite the Smithsonian Institution Archives as source of the content and the project title as provided at the top of the document. Include the accession number or collection name; when possible, link to the Smithsonian Institution Archives website.
- If you wish to use this material in a for-profit publication, exhibition, or online project, please contact Smithsonian Institution Archives or [transcribe@si.edu](mailto:transcribe@si.edu)

For more information on this project and related material, contact the Smithsonian Institution Archives. [See this project](#) and other collections in the Smithsonian Transcription Center.

[[left page blank]]

[[end page]]

[[start page]]

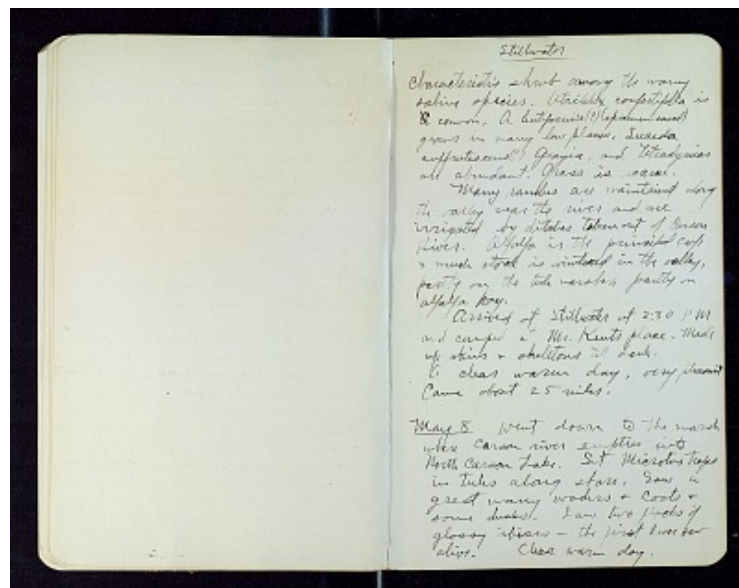
[[underlined]] Stillwater [[/underlined]]

characteristic shrub among the many saline species. *Atriplex confertifolia* is ~~common~~ *A. lentiformis*(?) (specimen saved) grows in many low places, *Suaeda suffrutescens*(?) *Grayia*, and *Tetradymias* are abundant. Grass is scarce.

Many ranches are maintained along the valley near the river and are irrigated by ditches taken out of Carson River. Alfalfa is the principal crop & much stock is wintered in the valley, partly on the tule marshes, partly on alfalfa hay.

Arrived at Stillwater at 2:30 PM and camped at Mr. Kents place. Made up skins & skeletons till dark. A clear warm day, very pleasant. Came about 25 miles.

[[underlined]] May 8 [[/underlined]] Went down to the marsh where Carson river empties into North Carson Lake. Set *Microtus* traps in tules along shore. Saw a great many waders & coots & some ducks. Saw two flocks of glossy ibises - the first I ever saw alive. Clear warm day.  
[[end page]]



Bailey - Nevada, etc., May - July 1898  
Transcribed and Reviewed by Digital Volunteers  
Extracted Mar-29-2024 05:20:36



## Smithsonian Institution

*Smithsonian Institution Archives*

The mission of the Smithsonian is the increase and diffusion of knowledge - shaping the future by preserving our heritage, discovering new knowledge, and sharing our resources with the world. Founded in 1846, the Smithsonian is the world's largest museum and research complex, consisting of 19 museums and galleries, the National Zoological Park, and nine research facilities. Become an active part of our mission through the Transcription Center. Together, we are discovering secrets hidden deep inside our collections that illuminate our history and our world.

Join us!

The Transcription Center: <https://transcription.si.edu>

On Facebook: <https://www.facebook.com/SmithsonianTranscriptionCenter>

On Twitter: [@TranscribeSI](https://twitter.com/TranscribeSI)

Connect with the Smithsonian

Smithsonian Institution: [www.si.edu](http://www.si.edu)

On Facebook: <https://www.facebook.com/Smithsonian>

On Twitter: [@smithsonian](https://twitter.com/smithsonian)