



**Smithsonian Institution**

*Smithsonian Institution Archives*

## **Bailey - Nevada, etc., May - July 1898**

Extracted on Jul-13-2025 04:55:17

**The Smithsonian Institution thanks all digital volunteers that transcribed and reviewed this material. Your work enriches Smithsonian collections, making them available to anyone with an interest in using them.**

The Smithsonian Institution (the "Smithsonian") provides the content on this website ([transcription.si.edu](https://transcription.si.edu)), other Smithsonian websites, and third-party sites on which it maintains a presence ("SI Websites") in support of its mission for the "increase and diffusion of knowledge." The Smithsonian invites visitors to use its online content for personal, educational and other non-commercial purposes. By using this website, you accept and agree to abide by the [following terms](#).

- If sharing the material in personal and educational contexts, please cite the Smithsonian Institution Archives as source of the content and the project title as provided at the top of the document. Include the accession number or collection name; when possible, link to the Smithsonian Institution Archives website.
- If you wish to use this material in a for-profit publication, exhibition, or online project, please contact Smithsonian Institution Archives or [transcribe@si.edu](mailto:transcribe@si.edu)

For more information on this project and related material, contact the Smithsonian Institution Archives. [See this project](#) and other collections in the Smithsonian Transcription Center.

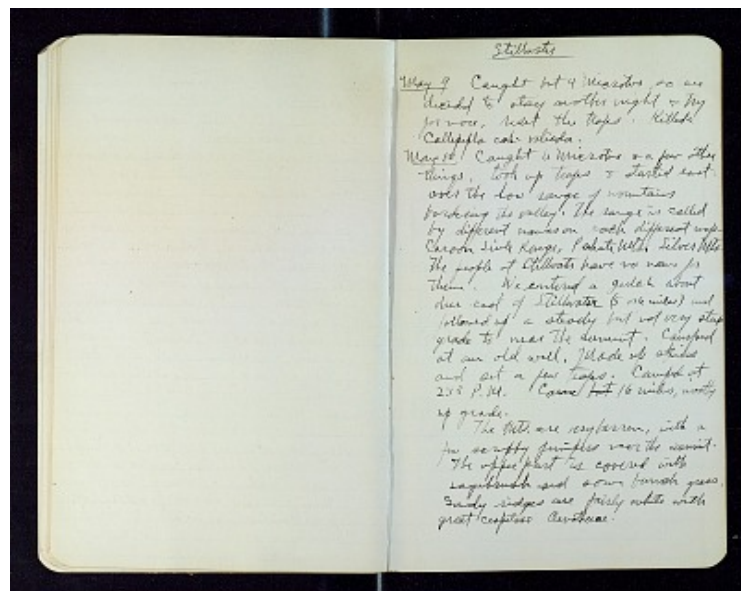
[[left page blank]]  
[[end page]]  
[[start page]]

[[underlined]] Stillwater [[/underlined]]

[[underlined]] May 9 [[/underlined]] Caught but 4 *Microtus* so we decided to stay another night & try for more. reset the traps. Killed a *Callipepla cal. volicola*.

[[underlined]] May 10 [[/underlined]] Caught 6 *Microtus* & a few other things, took up traps & started east. over the low range of mountains bordering the valley. The range is called by different names on each different map - Carson Sink Range, Pahute Mts., Silver Mts. The people at Stillwater have no name for them. We entered a gulch about due east of Stillwater (5 or 6 miles) and followed up a steady but not very steep grade to near the summit. Camped at an old well. Made up skins and set a few traps. Camped at 2:15 P.M. Came ~~but~~ 16 miles, mostly up grade.

The Mts. are very barren, with a few scrubby junipers near the summit. The upper part is covered with sagebrush and some bunch grass. Sandy ridges are fairly white with great cespitose *Oenotherae*.



Bailey - Nevada, etc., May - July 1898  
Transcribed and Reviewed by Digital Volunteers  
Extracted Jul-13-2025 04:55:17



## Smithsonian Institution

*Smithsonian Institution Archives*

The mission of the Smithsonian is the increase and diffusion of knowledge - shaping the future by preserving our heritage, discovering new knowledge, and sharing our resources with the world. Founded in 1846, the Smithsonian is the world's largest museum and research complex, consisting of 19 museums and galleries, the National Zoological Park, and nine research facilities. Become an active part of our mission through the Transcription Center. Together, we are discovering secrets hidden deep inside our collections that illuminate our history and our world.

Join us!

The Transcription Center: <https://transcription.si.edu>

On Facebook: <https://www.facebook.com/SmithsonianTranscriptionCenter>

On Twitter: [@TranscribeSI](https://twitter.com/TranscribeSI)

Connect with the Smithsonian

Smithsonian Institution: [www.si.edu](http://www.si.edu)

On Facebook: <https://www.facebook.com/Smithsonian>

On Twitter: [@smithsonian](https://twitter.com/smithsonian)