



Smithsonian Institution

Smithsonian Institution Archives

Bailey - California, Colorado, New Mexico, Oregon, Texas, April - August 1899

Extracted on Apr-17-2024 09:51:21

The Smithsonian Institution thanks all digital volunteers that transcribed and reviewed this material. Your work enriches Smithsonian collections, making them available to anyone with an interest in using them.

The Smithsonian Institution (the "Smithsonian") provides the content on this website (transcription.si.edu), other Smithsonian websites, and third-party sites on which it maintains a presence ("SI Websites") in support of its mission for the "increase and diffusion of knowledge." The Smithsonian invites visitors to use its online content for personal, educational and other non-commercial purposes. By using this website, you accept and agree to abide by the [following terms](#).

- If sharing the material in personal and educational contexts, please cite the Smithsonian Institution Archives as source of the content and the project title as provided at the top of the document. Include the accession number or collection name; when possible, link to the Smithsonian Institution Archives website.
- If you wish to use this material in a for-profit publication, exhibition, or online project, please contact Smithsonian Institution Archives or transcribe@si.edu

For more information on this project and related material, contact the Smithsonian Institution Archives. [See this project](#) and other collections in the Smithsonian Transcription Center.

[[left page blank]]
[[end page]]
[[start page]]

[[underlined]] Houston to Richmond [[/underlined]]

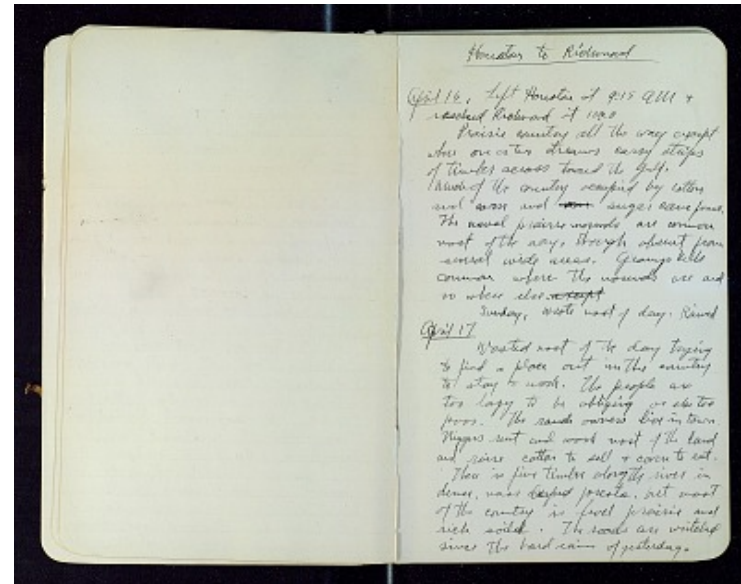
[[underlined]] April 16 [[/underlined]], Left Houston at 9:15 AM & reached Richmond at 10:20

Prairie country all the way except where one or two streams carry strips of timber across toward the gulf. Much of the country occupied by cotton and corn and ~~[[?]]~~ ~~[[?]]~~ sugar cane farms. The usual prairie mounds are common most of the way, though absent from several wide areas. Geomys hills common where the mounds are and no where else. ~~except~~ except

Sunday, wrote most of day. Rained

[[underlined]] April 17 [[/underlined]]

Wasted most of the day trying to find a place out in the country to stay & work. The people are too lazy to be obliging or else too poor. The ranch owners live in town. Niggers rent and work most of the land and raise cotton to sell & corn to eat. There is fine timber along the river in dense, moss draped forests, but most of the country is level prairie and rich soiled. The roads are wretched since the hard rain yesterday.



Bailey - California, Colorado, New Mexico, Oregon, Texas, April - August 1899
Transcribed and Reviewed by Digital Volunteers
Extracted Apr-17-2024 09:51:21



Smithsonian Institution

Smithsonian Institution Archives

The mission of the Smithsonian is the increase and diffusion of knowledge - shaping the future by preserving our heritage, discovering new knowledge, and sharing our resources with the world. Founded in 1846, the Smithsonian is the world's largest museum and research complex, consisting of 19 museums and galleries, the National Zoological Park, and nine research facilities. Become an active part of our mission through the Transcription Center. Together, we are discovering secrets hidden deep inside our collections that illuminate our history and our world.

Join us!

The Transcription Center: <https://transcription.si.edu>

On Facebook: <https://www.facebook.com/SmithsonianTranscriptionCenter>

On Twitter: [@TranscribeSI](https://twitter.com/TranscribeSI)

Connect with the Smithsonian

Smithsonian Institution: www.si.edu

On Facebook: <https://www.facebook.com/Smithsonian>

On Twitter: [@smithsonian](https://twitter.com/smithsonian)