



**Smithsonian Institution**

*Smithsonian Institution Archives*

## **Bailey - Texas, California, and New Mexico, April 1900 - August 1900**

Extracted on Mar-29-2024 09:08:10

**The Smithsonian Institution thanks all digital volunteers that transcribed and reviewed this material. Your work enriches Smithsonian collections, making them available to anyone with an interest in using them.**

The Smithsonian Institution (the "Smithsonian") provides the content on this website ([transcription.si.edu](https://transcription.si.edu)), other Smithsonian websites, and third-party sites on which it maintains a presence ("SI Websites") in support of its mission for the "increase and diffusion of knowledge." The Smithsonian invites visitors to use its online content for personal, educational and other non-commercial purposes. By using this website, you accept and agree to abide by the [following terms](#).

- If sharing the material in personal and educational contexts, please cite the Smithsonian Institution Archives as source of the content and the project title as provided at the top of the document. Include the accession number or collection name; when possible, link to the Smithsonian Institution Archives website.
- If you wish to use this material in a for-profit publication, exhibition, or online project, please contact Smithsonian Institution Archives or [transcribe@si.edu](mailto:transcribe@si.edu)

For more information on this project and related material, contact the Smithsonian Institution Archives. [See this project](#) and other collections in the Smithsonian Transcription Center.

[[blank page]]  
[[end page]]  
[[start page]]

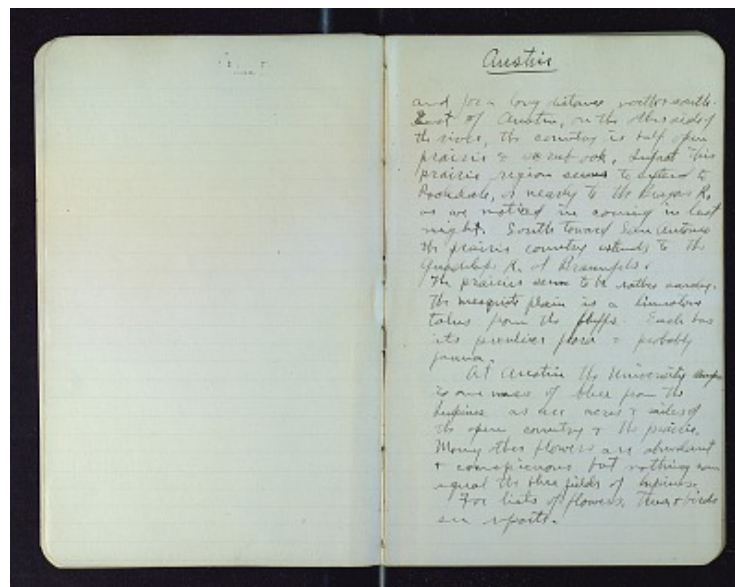
[[underlined]] Austin [[/underlined]]

and for a long distance north & south. East of Austin, on the other side of the river, the country is half open prairie & scrub oak. In fact this prairie region seems to extend to Rockdale, or nearly to the Brazos R. as we noticed in coming in last night. South toward San Antonio the prairie country extends to the Guadalupe R. at Braunfels.

The prairies seem to be rather sandy. The mesquite plain is a limestone talus from the bluffs. Each has its peculiar flora & probably fauna.

At Austin the University campus is one mass of blue from the Lupines as are acres & miles of the open country & the prairie. Many other flowers are abundant & conspicuous but nothing can equal the blue fields of Lupines.

For lists of flowers, trees, & birds see reports.



Bailey - Texas, California, and New Mexico, April 1900 - August 1900  
Transcribed and Reviewed by Digital Volunteers  
Extracted Mar-29-2024 09:08:10



## Smithsonian Institution

*Smithsonian Institution Archives*

The mission of the Smithsonian is the increase and diffusion of knowledge - shaping the future by preserving our heritage, discovering new knowledge, and sharing our resources with the world. Founded in 1846, the Smithsonian is the world's largest museum and research complex, consisting of 19 museums and galleries, the National Zoological Park, and nine research facilities. Become an active part of our mission through the Transcription Center. Together, we are discovering secrets hidden deep inside our collections that illuminate our history and our world.

Join us!

The Transcription Center: <https://transcription.si.edu>

On Facebook: <https://www.facebook.com/SmithsonianTranscriptionCenter>

On Twitter: [@TranscribeSI](https://twitter.com/TranscribeSI)

Connect with the Smithsonian

Smithsonian Institution: [www.si.edu](http://www.si.edu)

On Facebook: <https://www.facebook.com/Smithsonian>

On Twitter: [@smithsonian](https://twitter.com/smithsonian)