



**Smithsonian Institution**

*Smithsonian Institution Archives*

## **Bailey - Colorado, New Mexico, Texas, July 1904 - December 1904**

Extracted on Apr-16-2024 05:25:53

**The Smithsonian Institution thanks all digital volunteers that transcribed and reviewed this material. Your work enriches Smithsonian collections, making them available to anyone with an interest in using them.**

The Smithsonian Institution (the "Smithsonian") provides the content on this website ([transcription.si.edu](https://transcription.si.edu)), other Smithsonian websites, and third-party sites on which it maintains a presence ("SI Websites") in support of its mission for the "increase and diffusion of knowledge." The Smithsonian invites visitors to use its online content for personal, educational and other non-commercial purposes. By using this website, you accept and agree to abide by the [following terms](#).

- If sharing the material in personal and educational contexts, please cite the Smithsonian Institution Archives as source of the content and the project title as provided at the top of the document. Include the accession number or collection name; when possible, link to the Smithsonian Institution Archives website.
- If you wish to use this material in a for-profit publication, exhibition, or online project, please contact Smithsonian Institution Archives or [transcribe@si.edu](mailto:transcribe@si.edu)

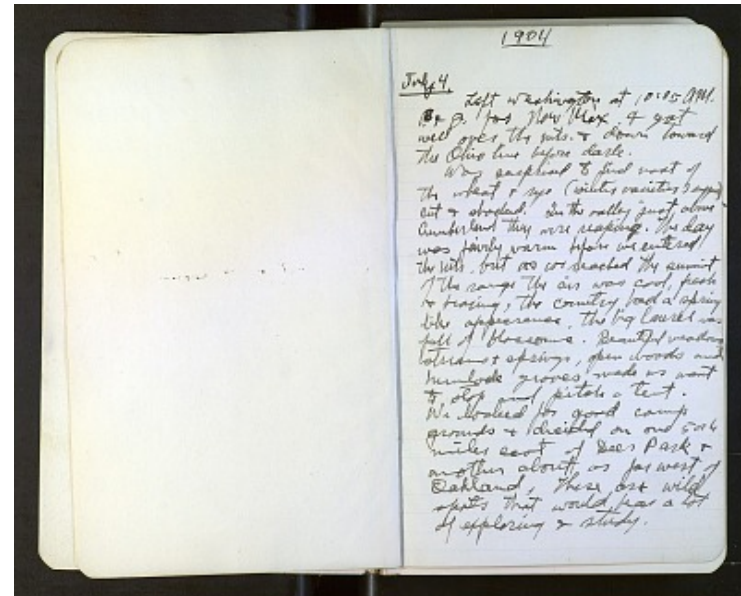
For more information on this project and related material, contact the Smithsonian Institution Archives. [See this project](#) and other collections in the Smithsonian Transcription Center.

[[blank page]]  
[[end page]]  
[[start page]]

[[underlined]] 1904 [[/underlined]]

[[underlined]] July 4, [[/underlined]]  
Left Washington at 10:05 A.M. B. & O. for New Mex. & got well over the mts. & down toward the Ohio line before dark.

Was surprised to find most of the wheat & rye (winter varieties I suppose) cut & shocked. In the valley just above Cumberland they were reaping. The day was fairly warm before we entered the mts. but as we reached the summit of the range the air was cool, fresh & bracing, the country had a spring like appearance, the big laurel was full of blossoms. Beautiful meadows, streams & springs, open woods and hemlock groves made us want to stop and pitch a tent. We looked for good camp grounds & decided on one 5 or 6 miles east of Deer Park & another about as far west of Oakland. These are wild spots that would bear a lot of exploring & study.



Bailey - Colorado, New Mexico, Texas, July 1904 - December 1904  
Transcribed and Reviewed by Digital Volunteers  
Extracted Apr-16-2024 05:25:53



## Smithsonian Institution

*Smithsonian Institution Archives*

The mission of the Smithsonian is the increase and diffusion of knowledge - shaping the future by preserving our heritage, discovering new knowledge, and sharing our resources with the world. Founded in 1846, the Smithsonian is the world's largest museum and research complex, consisting of 19 museums and galleries, the National Zoological Park, and nine research facilities. Become an active part of our mission through the Transcription Center. Together, we are discovering secrets hidden deep inside our collections that illuminate our history and our world.

Join us!

The Transcription Center: <https://transcription.si.edu>

On Facebook: <https://www.facebook.com/SmithsonianTranscriptionCenter>

On Twitter: [@TranscribeSI](https://twitter.com/TranscribeSI)

Connect with the Smithsonian

Smithsonian Institution: [www.si.edu](http://www.si.edu)

On Facebook: <https://www.facebook.com/Smithsonian>

On Twitter: [@smithsonian](https://twitter.com/smithsonian)