



Smithsonian Institution

Smithsonian Institution Archives

Bailey - Colorado, New Mexico, Texas, July 1904 - December 1904

Extracted on Mar-29-2024 11:14:45

The Smithsonian Institution thanks all digital volunteers that transcribed and reviewed this material. Your work enriches Smithsonian collections, making them available to anyone with an interest in using them.

The Smithsonian Institution (the "Smithsonian") provides the content on this website (transcription.si.edu), other Smithsonian websites, and third-party sites on which it maintains a presence ("SI Websites") in support of its mission for the "increase and diffusion of knowledge." The Smithsonian invites visitors to use its online content for personal, educational and other non-commercial purposes. By using this website, you accept and agree to abide by the [following terms](#).

- If sharing the material in personal and educational contexts, please cite the Smithsonian Institution Archives as source of the content and the project title as provided at the top of the document. Include the accession number or collection name; when possible, link to the Smithsonian Institution Archives website.
- If you wish to use this material in a for-profit publication, exhibition, or online project, please contact Smithsonian Institution Archives or transcribe@si.edu

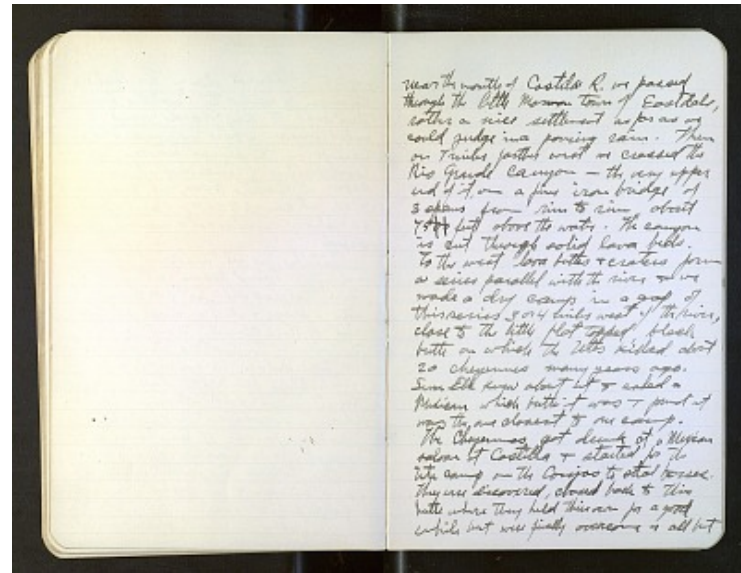
For more information on this project and related material, contact the Smithsonian Institution Archives. [See this project](#) and other collections in the Smithsonian Transcription Center.

[[blank page]]
[[end page]]
[[start page]]

near the mouth of Castila R. we passed through the little Mormon town of Eastdale, rather a nice settlement as far as we could judge in a pouring rain. Then on Triules farther west we crossed the Rio Grande Canyon - the very upper end of it, on a fine iron bridge of 3 spans from rim to rim about 75~~00~~ feet above the water. The canyon is cut through solid lava beds.

To the west lava buttes & craters form a series parallel with the river & we made a dry camp in a gap of this series 3 or 4 miles west of the river, close to the little flat topped, black butte on which the Utes killed about 20 cheyennes many years ago. Sun Elk knew about it & asked a Mexican which butte it was & found it was the one closest to our camp.

The Cheyennes got drunk at a Mexican saloon at Castilla & started for the Ute camp on the Conejos to steal horses. They were discovered, chased back to this butte where they held their own for a good while but were finally overcome & all but



Bailey - Colorado, New Mexico, Texas, July 1904 - December 1904
Transcribed and Reviewed by Digital Volunteers
Extracted Mar-29-2024 11:14:45



Smithsonian Institution

Smithsonian Institution Archives

The mission of the Smithsonian is the increase and diffusion of knowledge - shaping the future by preserving our heritage, discovering new knowledge, and sharing our resources with the world. Founded in 1846, the Smithsonian is the world's largest museum and research complex, consisting of 19 museums and galleries, the National Zoological Park, and nine research facilities. Become an active part of our mission through the Transcription Center. Together, we are discovering secrets hidden deep inside our collections that illuminate our history and our world.

Join us!

The Transcription Center: <https://transcription.si.edu>

On Facebook: <https://www.facebook.com/SmithsonianTranscriptionCenter>

On Twitter: [@TranscribeSI](https://twitter.com/TranscribeSI)

Connect with the Smithsonian

Smithsonian Institution: www.si.edu

On Facebook: <https://www.facebook.com/Smithsonian>

On Twitter: [@smithsonian](https://twitter.com/smithsonian)