



Smithsonian Institution

Archives of American Art

Jacques Seligmann & Co. records, General Correspondence: Berenson, Bernard, 1939-1953

Extracted on Mar-28-2024 04:58:58

The Smithsonian Institution thanks all digital volunteers that transcribed and reviewed this material. Your work enriches Smithsonian collections, making them available to anyone with an interest in using them.

The Smithsonian Institution (the "Smithsonian") provides the content on this website (transcription.si.edu), other Smithsonian websites, and third-party sites on which it maintains a presence ("SI Websites") in support of its mission for the "increase and diffusion of knowledge." The Smithsonian invites visitors to use its online content for personal, educational and other non-commercial purposes. By using this website, you accept and agree to abide by the [following terms](#).

- If sharing the material in personal and educational contexts, please cite the Archives of American Art as source of the content and the project title as provided at the top of the document. Include the accession number or collection name; when possible, link to the Archives of American Art website.
- If you wish to use this material in a for-profit publication, exhibition, or online project, please contact Archives of American Art or transcribe@si.edu

For more information on this project and related material, contact the Archives of American Art. [See this project](#) and other collections in the Smithsonian Transcription Center.

July 5th., 1939.

Dear Mr. Berenson:

My cousin, Georges, has just forwarded to me your kind lines of June 22nd., in reference to our Giov. Bellini portrait, as he thought, evidently, that the painting being here, I had the full documentation about it.

However, I do not find these documents here, but it is definitely on your recommendation that I purchased this painting, as you were most enthusiastic about it, and being unable to quote the words of your letter, as you request us to do, I can only quote your incisive statement as I have always remembered it - that it was 'Giov. Bellini at this best', and furthermore, if I recollect well, you compared it to the Portrait in the Mellon Collection and dated our's around 1490.

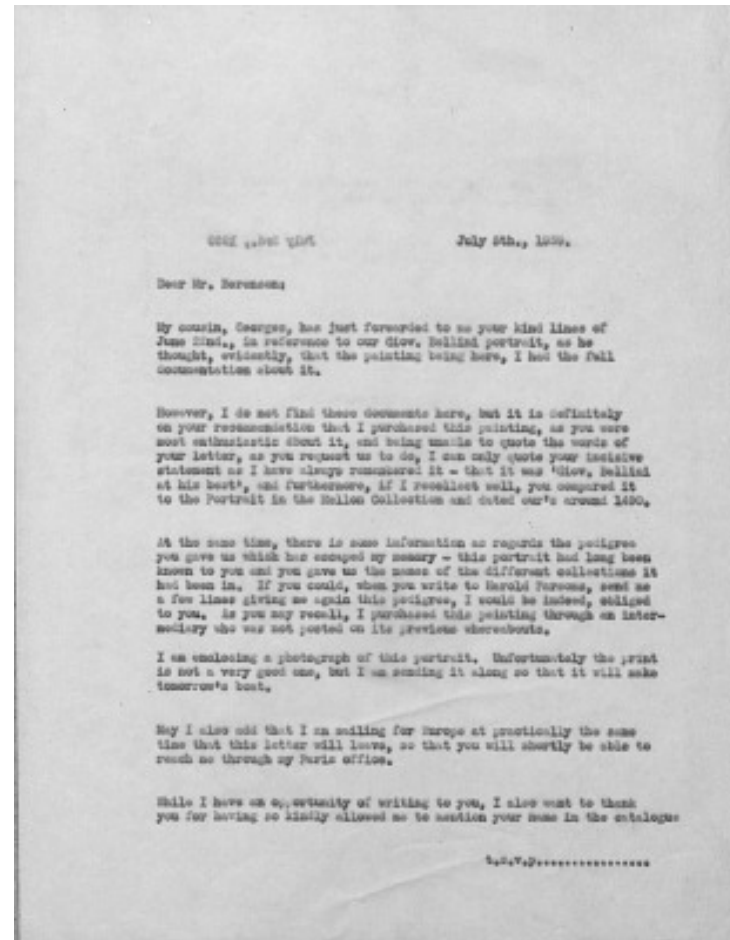
At the same time, there is some information as regards the pedigree you gave us which has escaped my memory - this portrait had long been known to you and you gave us the names of the different collections it had been in. If you could, when you write to Harold Parsons, send me a few lines giving me again this pedigree, I would be indeed, obliged to you. As you may recall, I purchased this painting through an intermediary who was not posted on its previous whereabouts.

I am enclosing a photograph of this portrait. Unfortunately the print is not a very good one, but I am sending it along so that it will make tomorrow's boat.

May I also add that I am sailing for Europe at practically the same time that this letter will leave, so that you will shortly be able to reach me through my Paris office.

While I have an opportunity of writing to you, I also want to thank you for having so kindly allowed me to mention your name in the catalogue

t.s.v.p.....



Jacques Seligmann & Co. records, General Correspondence: Berenson, Bernard, 1939-1953
Transcribed and Reviewed by Digital Volunteers
Extracted Mar-28-2024 04:58:58



Smithsonian Institution

Archives of American Art

The mission of the Smithsonian is the increase and diffusion of knowledge - shaping the future by preserving our heritage, discovering new knowledge, and sharing our resources with the world. Founded in 1846, the Smithsonian is the world's largest museum and research complex, consisting of 19 museums and galleries, the National Zoological Park, and nine research facilities. Become an active part of our mission through the Transcription Center. Together, we are discovering secrets hidden deep inside our collections that illuminate our history and our world.

Join us!

The Transcription Center: <https://transcription.si.edu>

On Facebook: <https://www.facebook.com/SmithsonianTranscriptionCenter>

On Twitter: [@TranscribeSI](https://twitter.com/TranscribeSI)

Connect with the Smithsonian

Smithsonian Institution: www.si.edu

On Facebook: <https://www.facebook.com/Smithsonian>

On Twitter: [@smithsonian](https://twitter.com/smithsonian)