



Smithsonian Institution

Smithsonian Institution Archives

Bailey - Arizona, California, Mexico, New Mexico, Texas, July - October 1908

Extracted on Mar-28-2024 12:29:04

The Smithsonian Institution thanks all digital volunteers that transcribed and reviewed this material. Your work enriches Smithsonian collections, making them available to anyone with an interest in using them.

The Smithsonian Institution (the "Smithsonian") provides the content on this website (transcription.si.edu), other Smithsonian websites, and third-party sites on which it maintains a presence ("SI Websites") in support of its mission for the "increase and diffusion of knowledge." The Smithsonian invites visitors to use its online content for personal, educational and other non-commercial purposes. By using this website, you accept and agree to abide by the [following terms](#).

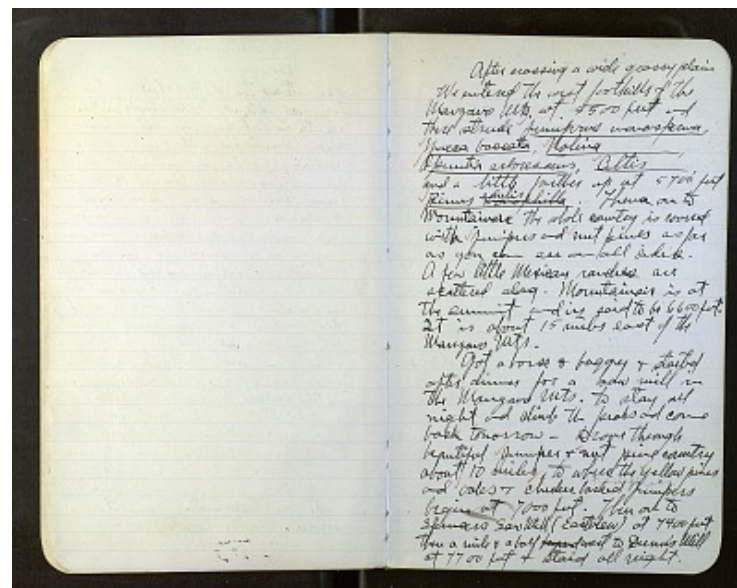
- If sharing the material in personal and educational contexts, please cite the Smithsonian Institution Archives as source of the content and the project title as provided at the top of the document. Include the accession number or collection name; when possible, link to the Smithsonian Institution Archives website.
- If you wish to use this material in a for-profit publication, exhibition, or online project, please contact Smithsonian Institution Archives or transcribe@si.edu

For more information on this project and related material, contact the Smithsonian Institution Archives. [See this project](#) and other collections in the Smithsonian Transcription Center.

[[blank page]]
[[end page]]

[[start page]]

After crossing a wide grassy plain We entered the west foothills of the Manzano Mts. at 5500 feet and there struck Juniperus monosperma, Yucca baccata, Nolina, Opuntia arborescens, Celtis, and a little farther up at 5700 feet Pinus monophylla ~~edulis~~. Thence on to Mountainair the whole country is covered with Junipers and nut pines as far as you can see on all sides. A few little Mexican ranches are scattered along. Mountainair is at the summit and is said to be 6600 feet. It is about 15 miles east of the Manzano Mts. Got a horse & buggy & started after dinner for a saw mill in the Manzano Mts. to stay all night and climb the peaks and come back tomorrow. Drove through beautiful Juniper & nut pine country about 10 miles to where the yellow pines and oaks & checker barked pachephloea Junipers begin at 7000 feet. Then on to Spencers Saw Mill (Eastview) at 7400 feet then a mile & a half ~~beyond~~ west to Dunn's Mill at 7700 feet & staid all night.



Bailey - Arizona, California, Mexico, New Mexico, Texas, July - October 1908
Transcribed and Reviewed by Digital Volunteers
Extracted Mar-28-2024 12:29:04



Smithsonian Institution

Smithsonian Institution Archives

The mission of the Smithsonian is the increase and diffusion of knowledge - shaping the future by preserving our heritage, discovering new knowledge, and sharing our resources with the world. Founded in 1846, the Smithsonian is the world's largest museum and research complex, consisting of 19 museums and galleries, the National Zoological Park, and nine research facilities. Become an active part of our mission through the Transcription Center. Together, we are discovering secrets hidden deep inside our collections that illuminate our history and our world.

Join us!

The Transcription Center: <https://transcription.si.edu>

On Facebook: <https://www.facebook.com/SmithsonianTranscriptionCenter>

On Twitter: [@TranscribeSI](https://twitter.com/TranscribeSI)

Connect with the Smithsonian

Smithsonian Institution: www.si.edu

On Facebook: <https://www.facebook.com/Smithsonian>

On Twitter: [@smithsonian](https://twitter.com/smithsonian)