



Smithsonian Institution

Archives Center - NMAH

Forman H. Craton - 1934 - 1935 - Diary

Extracted on Apr-17-2024 05:29:06

The Smithsonian Institution thanks all digital volunteers that transcribed and reviewed this material. Your work enriches Smithsonian collections, making them available to anyone with an interest in using them.

The Smithsonian Institution (the "Smithsonian") provides the content on this website (transcription.si.edu), other Smithsonian websites, and third-party sites on which it maintains a presence ("SI Websites") in support of its mission for the "increase and diffusion of knowledge." The Smithsonian invites visitors to use its online content for personal, educational and other non-commercial purposes. By using this website, you accept and agree to abide by the [following terms](#).

- If sharing the material in personal and educational contexts, please cite the Archives Center - NMAH as source of the content and the project title as provided at the top of the document. Include the accession number or collection name; when possible, link to the Archives Center - NMAH website.
- If you wish to use this material in a for-profit publication, exhibition, or online project, please contact Archives Center - NMAH or transcribe@si.edu

For more information on this project and related material, contact the Archives Center - NMAH. [See this project](#) and other collections in the Smithsonian Transcription Center.

1
THE YEAR 1934
[[short line]]

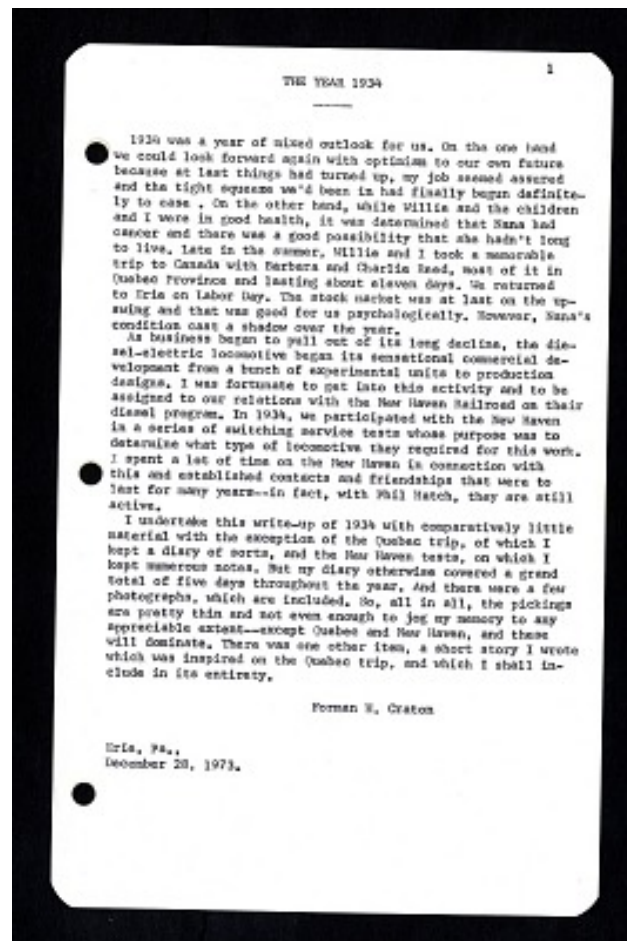
1934 was a year of mixed outlook for us. On the one hand we could look forward again with optimism to our own future because at last things had turned up, my job seemed assured and the tight squeeze we'd been in had finally begun definitely to ease. On the other hand, while Willie and the children and I were in good health, it was determined that Nana had cancer and there was a good possibility that she hadn't long to live. Late in the summer, Willie and I took a memorable trip to Canada with Barbara and Charlie Reed, most of it in Quebec Province and lasting about eleven days. We returned to Erie on Labor Day. The stock market was at last on the upswing and that was good for us psychologically. However, Nana's condition cast a shadow over the year.

As business began to pull out of its long decline, the diesel-electric locomotive began its sensational commercial development from a bunch of experimental units to production designs. I was fortunate to get into this activity and to be assigned to our relations with the New Haven Railroad on their diesel program. In 1934, we participated with the New Haven in a series of switching service tests whose purpose was to determine what type of locomotive they required for this work. I spent a lot of time on the New Haven in connection with this and established contacts and friendships that were to last for many years—in fact, with Phil Hatch, they are still active.

I undertake this write-up of 1934 with comparatively little material with the exception of the Quebec trip, of which I kept a diary of sorts, and the New Haven tests, on which I kept numerous notes. But my diary otherwise covered a grand total of five days throughout the year. And there were a few photographs, which are included. So, all in all, the pickings are pretty thin and not even enough to jog my memory to any appreciable extent—except Quebec and New Haven, and these will dominate. There was one other item, a short story I wrote which was inspired on the Quebec trip, and which I shall include in its entirety.

Forman H. Craton

Erie, Pa.,
December 28, 1973.



Forman H. Craton - 1934 - 1935 - Diary
Transcribed and Reviewed by Digital Volunteers
Extracted Apr-17-2024 05:29:06



Smithsonian Institution

Archives Center - NMAH

The mission of the Smithsonian is the increase and diffusion of knowledge - shaping the future by preserving our heritage, discovering new knowledge, and sharing our resources with the world. Founded in 1846, the Smithsonian is the world's largest museum and research complex, consisting of 19 museums and galleries, the National Zoological Park, and nine research facilities. Become an active part of our mission through the Transcription Center. Together, we are discovering secrets hidden deep inside our collections that illuminate our history and our world.

Join us!

The Transcription Center: <https://transcription.si.edu>

On Facebook: <https://www.facebook.com/SmithsonianTranscriptionCenter>

On Twitter: [@TranscribeSI](https://twitter.com/TranscribeSI)

Connect with the Smithsonian

Smithsonian Institution: www.si.edu

On Facebook: <https://www.facebook.com/Smithsonian>

On Twitter: [@smithsonian](https://twitter.com/smithsonian)