



Smithsonian Institution

Smithsonian Institution Archives

Proceedings of the Board of Regents Meetings, 1920-1931

Extracted on Mar-29-2024 05:37:02

The Smithsonian Institution thanks all digital volunteers that transcribed and reviewed this material. Your work enriches Smithsonian collections, making them available to anyone with an interest in using them.

The Smithsonian Institution (the "Smithsonian") provides the content on this website (transcription.si.edu), other Smithsonian websites, and third-party sites on which it maintains a presence ("SI Websites") in support of its mission for the "increase and diffusion of knowledge." The Smithsonian invites visitors to use its online content for personal, educational and other non-commercial purposes. By using this website, you accept and agree to abide by the [following terms](#).

- If sharing the material in personal and educational contexts, please cite the Smithsonian Institution Archives as source of the content and the project title as provided at the top of the document. Include the accession number or collection name; when possible, link to the Smithsonian Institution Archives website.
- If you wish to use this material in a for-profit publication, exhibition, or online project, please contact Smithsonian Institution Archives or transcribe@si.edu

For more information on this project and related material, contact the Smithsonian Institution Archives. [See this project](#) and other collections in the Smithsonian Transcription Center.

[[preprinted]]
SMITHSONIAN INSTITUTION 743
[[/preprinted]]

[[preprinted left margin]]
MADE BY BAKER-VAWTER CO.
[[/preprinted left margin]]

Secretary's Policy until after the presentation of the Permanent Committee's report, and there being no objection, it was so ordered.

The Secretary said that several matters of interest to the Board had come up since the last meeting, and that he would like to present them at this point as follows:

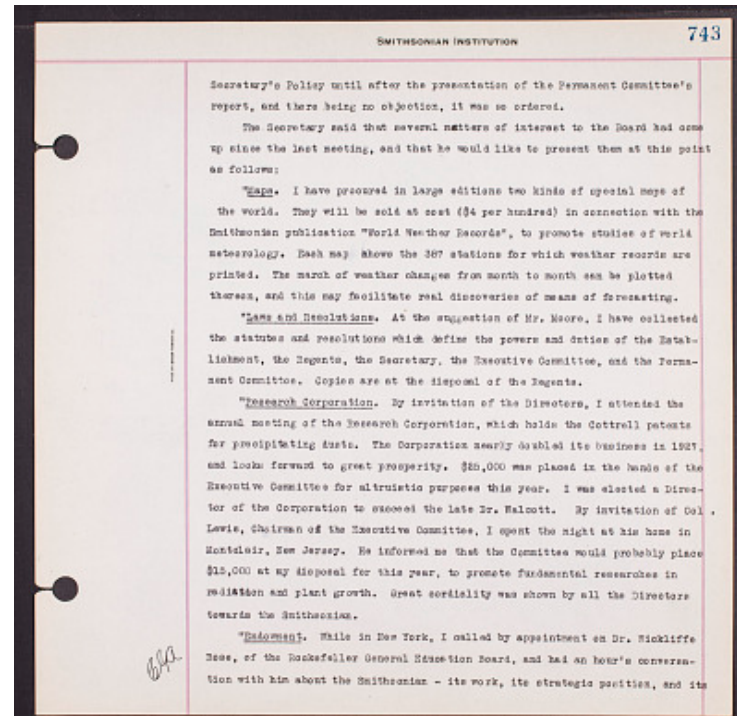
"[[underlined]]Maps[[/underlined]]. I have procured in large editions two kinds of special maps of the world. They will be sold at cost (\$4 per hundred) in connection with the Smithsonian publication "World Weather Records", to promote studies of world meteorology. Each map shows the 387 stations for which weather records are printed. The march of weather changes from month to month can be plotted thereon, and this may facilitate real discoveries of means of forecasting.

"[[underlined]]Laws and Resolutions[[/underlined]]. At the suggestion of Mr. Moore, I have collected the statutes and resolutions which define the powers and duties of the Establishment, the Regents, the Secretary, the Executive Committee, and the Permanent Committee. Copies are at the disposal of the Regents.

"[[underlined]]Research Corporation[[/underlined]]. By invitation of the Directors, I attended the annual meeting of the Research Corporation, which holds the Cottrell patents for precipitating dusts. The Corporation nearly doubled its business in 1927, and looks forward to great prosperity. \$25,000 was placed in the hands of the Executive Committee for altruistic purposes this year. I was elected a Director of the Corporation to succeed the late Dr. Walcott. By invitation of Col. Lewis, Chairman of the Executive Committee, I spent the night at his home in Montclair, New Jersey. He informed me that the Committee would probably place \$15,000 at my disposal for this year, to promote fundamental researches in radiation and plant growth. Great cordiality was shown by all the Directors towards the Smithsonian.

"[[underlined]]Endowment[[/underlined]]. While in New York, I called by appointment on Dr. Wickliffe Rose, of the Rockefeller General Education Board, and had an hour's conversation with him about the Smithsonian — its work, its strategic position and its

[[initialed]] CGA [[/initialed]]



Proceedings of the Board of Regents Meetings, 1920-1931
Transcribed and Reviewed by Digital Volunteers
Extracted Mar-29-2024 05:37:02



Smithsonian Institution

Smithsonian Institution Archives

The mission of the Smithsonian is the increase and diffusion of knowledge - shaping the future by preserving our heritage, discovering new knowledge, and sharing our resources with the world. Founded in 1846, the Smithsonian is the world's largest museum and research complex, consisting of 19 museums and galleries, the National Zoological Park, and nine research facilities. Become an active part of our mission through the Transcription Center. Together, we are discovering secrets hidden deep inside our collections that illuminate our history and our world.

Join us!

The Transcription Center: <https://transcription.si.edu>

On Facebook: <https://www.facebook.com/SmithsonianTranscriptionCenter>

On Twitter: [@TranscribeSI](https://twitter.com/TranscribeSI)

Connect with the Smithsonian

Smithsonian Institution: www.si.edu

On Facebook: <https://www.facebook.com/Smithsonian>

On Twitter: [@smithsonian](https://twitter.com/smithsonian)