



Smithsonian Institution

Smithsonian Institution Archives

US Navy Galapagos Expedition 1941: Miscellaneous notes (1 of 3)

Extracted on Apr-18-2024 10:58:54

The Smithsonian Institution thanks all digital volunteers that transcribed and reviewed this material. Your work enriches Smithsonian collections, making them available to anyone with an interest in using them.

The Smithsonian Institution (the "Smithsonian") provides the content on this website (transcription.si.edu), other Smithsonian websites, and third-party sites on which it maintains a presence ("SI Websites") in support of its mission for the "increase and diffusion of knowledge." The Smithsonian invites visitors to use its online content for personal, educational and other non-commercial purposes. By using this website, you accept and agree to abide by the [following terms](#).

- If sharing the material in personal and educational contexts, please cite the Smithsonian Institution Archives as source of the content and the project title as provided at the top of the document. Include the accession number or collection name; when possible, link to the Smithsonian Institution Archives website.
- If you wish to use this material in a for-profit publication, exhibition, or online project, please contact Smithsonian Institution Archives or transcribe@si.edu

For more information on this project and related material, contact the Smithsonian Institution Archives. [See this project](#) and other collections in the Smithsonian Transcription Center.

TRANSLATION

Part III Hunting in the Archipelago of Colon. Special refuges or National Parks.

Art. 740.-The islands of the Archipelago of Colon which are named in this article can be declared for an unlimited period of time to be used for special refuges or National Parks for animals, reptiles, land tortoises, marine tortoises, lizards, or any other species of zoological life. The referred to refuges or National Parks may be declared inviolable refuges for all classes of zoological life whether it be resident or migratory.

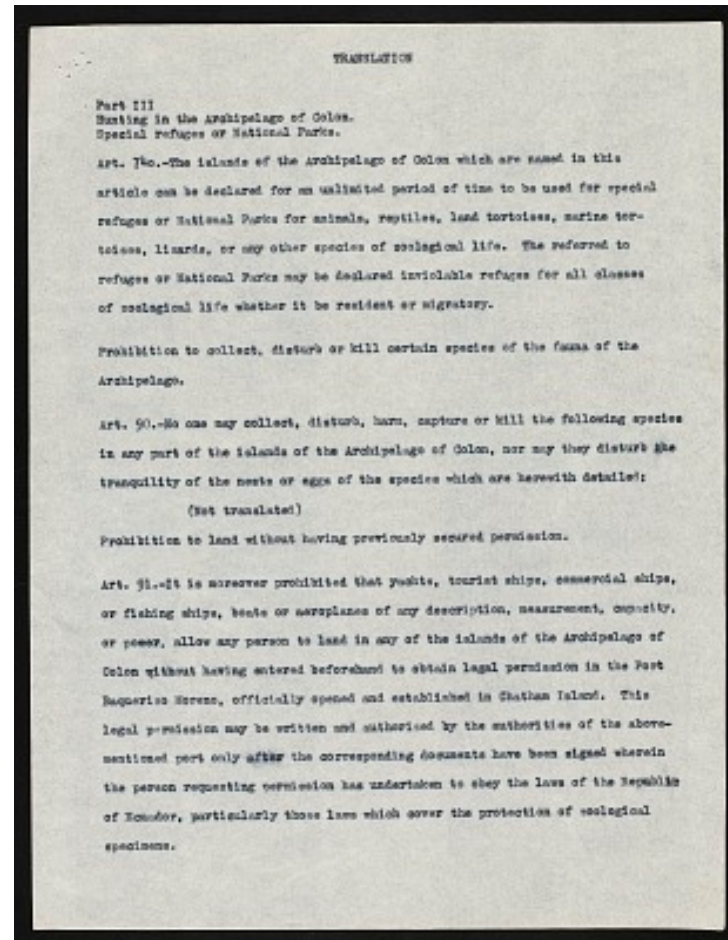
Prohibition to collect, disturb or kill certain species of the fauna of the Archipelago.

Art. 90.-No one may collect, disturb, harm, capture or kill the following species in any part of the islands of the Archipelago of Colon, nor may they disturb the tranquility of the nests or eggs of the species which are herewith detailed:

(Not translated)

Prohibition to land without having previously secured permission.

Art. 91.-It is moreover prohibited that yachts, tourist ships, commercial ships, or fishing ships, boats or aeroplanes of any description, measurement, capacity, or power, allow any person to land in any of the islands of the Archipelago of Colon without having entered beforehand to obtain legal permission in the Port Baquerizo Moreno, officially opened and established in Chatham Island. This legal permission may be written and authorized by the authorities of the above-mentioned port only after the corresponding documents have been signed wherein the person requesting permission has undertaken to obey the laws of the Republic of Ecuador, particularly those laws which cover the protection of zoological specimens.



US Navy Galapagos Expedition 1941: Miscellaneous notes (1 of 3)
Transcribed and Reviewed by Digital Volunteers
Extracted Apr-18-2024 10:58:54



Smithsonian Institution

Smithsonian Institution Archives

The mission of the Smithsonian is the increase and diffusion of knowledge - shaping the future by preserving our heritage, discovering new knowledge, and sharing our resources with the world. Founded in 1846, the Smithsonian is the world's largest museum and research complex, consisting of 19 museums and galleries, the National Zoological Park, and nine research facilities. Become an active part of our mission through the Transcription Center. Together, we are discovering secrets hidden deep inside our collections that illuminate our history and our world.

Join us!

The Transcription Center: <https://transcription.si.edu>

On Facebook: <https://www.facebook.com/SmithsonianTranscriptionCenter>

On Twitter: [@TranscribeSI](https://twitter.com/TranscribeSI)

Connect with the Smithsonian

Smithsonian Institution: www.si.edu

On Facebook: <https://www.facebook.com/Smithsonian>

On Twitter: [@smithsonian](https://twitter.com/smithsonian)