



Smithsonian Institution

Smithsonian Institution Archives

US Navy Galapagos Expedition 1941: Miscellaneous notes (1 of 3)

Extracted on Apr-19-2024 02:57:46

The Smithsonian Institution thanks all digital volunteers that transcribed and reviewed this material. Your work enriches Smithsonian collections, making them available to anyone with an interest in using them.

The Smithsonian Institution (the "Smithsonian") provides the content on this website (transcription.si.edu), other Smithsonian websites, and third-party sites on which it maintains a presence ("SI Websites") in support of its mission for the "increase and diffusion of knowledge." The Smithsonian invites visitors to use its online content for personal, educational and other non-commercial purposes. By using this website, you accept and agree to abide by the [following terms](#).

- If sharing the material in personal and educational contexts, please cite the Smithsonian Institution Archives as source of the content and the project title as provided at the top of the document. Include the accession number or collection name; when possible, link to the Smithsonian Institution Archives website.
- If you wish to use this material in a for-profit publication, exhibition, or online project, please contact Smithsonian Institution Archives or transcribe@si.edu

For more information on this project and related material, contact the Smithsonian Institution Archives. [See this project](#) and other collections in the Smithsonian Transcription Center.

^[[Mr. Leap has smooth original and carbon of this memo]]
^[[Rough Draft.]]
[[underlined]] ^[[Graf has [[smooth?]] draft]] [[/underlined]]

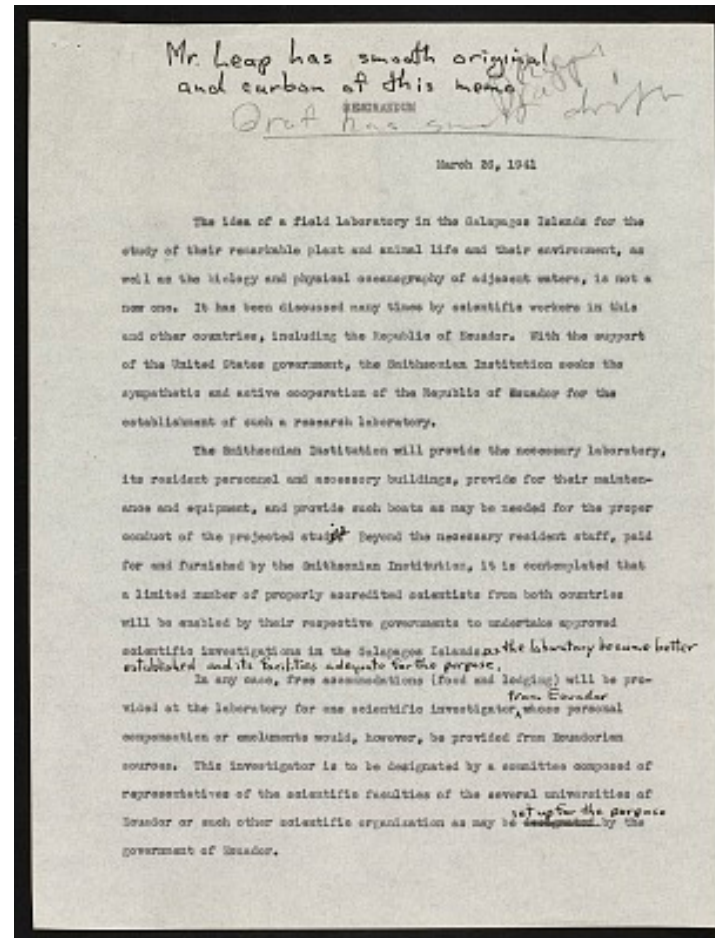
MEMORANDUM

March 26, 1941

The idea of a field laboratory in the Galapagos Islands for the study of their remarkable plant and animal life and their environment, as well as the biology and physical oceanography of adjacent waters, is not a new one. It has been discussed many times by scientific workers in this and other countries, including the Republic of Ecuador. With the support of the United States government, the Smithsonian Institution seeks the sympathetic and active cooperation of the Republic of Ecuador for the establishment of such a research laboratory.

The Smithsonian Institution will provide the necessary laboratory, its resident personnel and accessory buildings, provide for their maintenance and equipment, and provide such boats as may be needed for the proper conduct of the projected study. Beyond the necessary resident staff, paid for and furnished by the Smithsonian Institution, it is contemplated that a limited number of properly accredited scientists from both countries will be enabled by their respective governments to undertake approved scientific investigations in the Galapagos Islands. ^[[as the laboratory became better established and its facilities adequate for the purpose.]]

In any case, free accommodations (food and lodging) will be provided at the laboratory for one scientific investigator ^[[from Ecuador]] whose personal compensation or emoluments would, however, be provided from Ecuadorian sources. This investigator is to be designated by a committee composed of representatives of the scientific faculties of the several universities of Ecuador or such other scientific organization as may be ~~designated~~ set up for the purpose]] by the government of Ecuador.



US Navy Galapagos Expedition 1941: Miscellaneous notes (1 of 3)
Transcribed and Reviewed by Digital Volunteers
Extracted Apr-19-2024 02:57:46



Smithsonian Institution

Smithsonian Institution Archives

The mission of the Smithsonian is the increase and diffusion of knowledge - shaping the future by preserving our heritage, discovering new knowledge, and sharing our resources with the world. Founded in 1846, the Smithsonian is the world's largest museum and research complex, consisting of 19 museums and galleries, the National Zoological Park, and nine research facilities. Become an active part of our mission through the Transcription Center. Together, we are discovering secrets hidden deep inside our collections that illuminate our history and our world.

Join us!

The Transcription Center: <https://transcription.si.edu>

On Facebook: <https://www.facebook.com/SmithsonianTranscriptionCenter>

On Twitter: [@TranscribeSI](https://twitter.com/TranscribeSI)

Connect with the Smithsonian

Smithsonian Institution: www.si.edu

On Facebook: <https://www.facebook.com/Smithsonian>

On Twitter: [@smithsonian](https://twitter.com/smithsonian)