



Smithsonian Institution

Smithsonian Institution Archives

US Navy Galapagos Expedition 1941: Miscellaneous notes (1 of 3)

Extracted on Mar-28-2024 09:53:20

The Smithsonian Institution thanks all digital volunteers that transcribed and reviewed this material. Your work enriches Smithsonian collections, making them available to anyone with an interest in using them.

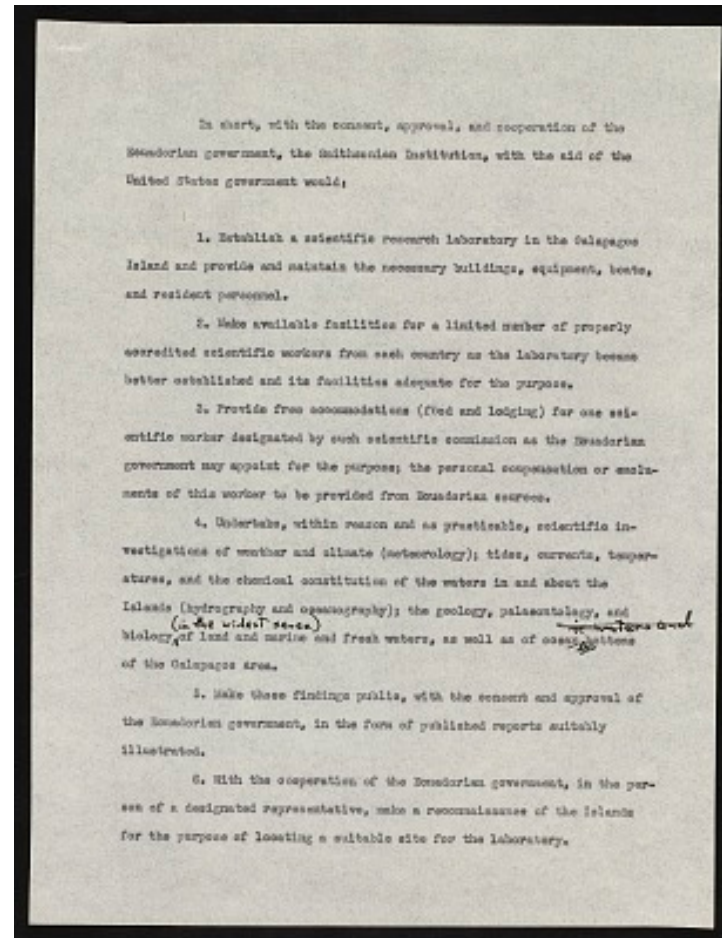
The Smithsonian Institution (the "Smithsonian") provides the content on this website (transcription.si.edu), other Smithsonian websites, and third-party sites on which it maintains a presence ("SI Websites") in support of its mission for the "increase and diffusion of knowledge." The Smithsonian invites visitors to use its online content for personal, educational and other non-commercial purposes. By using this website, you accept and agree to abide by the [following terms](#).

- If sharing the material in personal and educational contexts, please cite the Smithsonian Institution Archives as source of the content and the project title as provided at the top of the document. Include the accession number or collection name; when possible, link to the Smithsonian Institution Archives website.
- If you wish to use this material in a for-profit publication, exhibition, or online project, please contact Smithsonian Institution Archives or transcribe@si.edu

For more information on this project and related material, contact the Smithsonian Institution Archives. [See this project](#) and other collections in the Smithsonian Transcription Center.

In short, with the consent, approval, and cooperation of the Ecuadorian government, the Smithsonian Institution, with the aid of the United States government would:

1. Establish a scientific research laboratory in the Galapagos Island and provide and maintain the necessary buildings, equipment, boats, and resident personnel.
2. Make available facilities for a limited number of properly accredited scientific workers from each country as the laboratory became better established and its facilities adequate for the purpose.
3. Provide free accommodation (food and lodging) for one scientific worker designated by such scientific commission as the Ecuadorian government may appoint for the purpose; the personal compensation or emoluments of this worker to be provided from Ecuadorian sources.
4. Undertake, within reason and as practicable, scientific investigations of weather and climate (meteorology); tides, currents, temperatures, and the chemical constitution of the waters in and about the Islands (hydrography and oceanography); the geology, palaeontology, and biology ^{^[[[in the widest sense]]]} of land and marine and fresh waters, as well as of ocean ~~[[strikethrough]]~~ ^{^[[in waters and]]} ~~[[/strikethrough]]~~ bottoms of the Galapagos area.
5. Make these findings public, with the consent and approval of the Ecuadorian government, in the form of published reports suitably illustrated.
6. With the cooperation of the Ecuadorian government, in the person of a designated representative, make a reconnaissance of the islands for the purpose of locating a suitable site for the laboratory.



US Navy Galapagos Expedition 1941: Miscellaneous notes (1 of 3)
Transcribed and Reviewed by Digital Volunteers
Extracted Mar-28-2024 09:53:20



Smithsonian Institution

Smithsonian Institution Archives

The mission of the Smithsonian is the increase and diffusion of knowledge - shaping the future by preserving our heritage, discovering new knowledge, and sharing our resources with the world. Founded in 1846, the Smithsonian is the world's largest museum and research complex, consisting of 19 museums and galleries, the National Zoological Park, and nine research facilities. Become an active part of our mission through the Transcription Center. Together, we are discovering secrets hidden deep inside our collections that illuminate our history and our world.

Join us!

The Transcription Center: <https://transcription.si.edu>

On Facebook: <https://www.facebook.com/SmithsonianTranscriptionCenter>

On Twitter: [@TranscribeSI](https://twitter.com/TranscribeSI)

Connect with the Smithsonian

Smithsonian Institution: www.si.edu

On Facebook: <https://www.facebook.com/Smithsonian>

On Twitter: [@smithsonian](https://twitter.com/smithsonian)