



Smithsonian Institution

Anacostia Community Museum Archives

Bladensburg Union Burial Association Records, Membership dues record book, 1874-1898

Extracted on Apr-18-2024 10:32:46

The Smithsonian Institution thanks all digital volunteers that transcribed and reviewed this material. Your work enriches Smithsonian collections, making them available to anyone with an interest in using them.

The Smithsonian Institution (the "Smithsonian") provides the content on this website (transcription.si.edu), other Smithsonian websites, and third-party sites on which it maintains a presence ("SI Websites") in support of its mission for the "increase and diffusion of knowledge." The Smithsonian invites visitors to use its online content for personal, educational and other non-commercial purposes. By using this website, you accept and agree to abide by the [following terms](#).

- If sharing the material in personal and educational contexts, please cite the Anacostia Community Museum Archives as source of the content and the project title as provided at the top of the document. Include the accession number or collection name; when possible, link to the Anacostia Community Museum Archives website.
- If you wish to use this material in a for-profit publication, exhibition, or online project, please contact Anacostia Community Museum Archives or transcribe@si.edu

For more information on this project and related material, contact the Anacostia Community Museum Archives. [See this project](#) and other collections in the Smithsonian Transcription Center.

[[in blue stamped]] 168 [[/in blue stamped]]

Bladensburg Aug 4 1890

The union was called to order by the President and opened by the Chaplain the Roll Call the house Was opened for Buisness the mon[[?]] Dues Was called for the the amon[[?]] of \$ 30.80 [[?]] the minits Was Read an[[?]] Recieved the Report form sick Comm[[?]] Was called for no Report the Report from the Board they Presented 7 aplica[[?]] for membership Recieved the comm[[?]] Was open for 30 days after which it shall close adjerned
J H Moss sec

Bladensburg Sept 1 1890

Monthly Dues \$13.40

J H Moss sec

Bladensburg Oct 6 1890

the union Was called to order by the President and Prayer by the Chaplia[[?]] after Roll call the house was open for Buisness the Report from chair sick comm[[?]] he Reported 2 sick T Scott. and Mrs A Turner. the Monthly Dues Was called for to the amont of \$ 28.20 on motion Wee Pay Bro T Scott \$2.00 per Week for 11 Weeks pased the Report from the Board 1. application Recieved the minits Was Recieved adjerned to Meet on the 2 Monday in November. J H Moss. sec

Bladensburg Nov 1890

Monthly Dues \$10.65

J H Moss sec

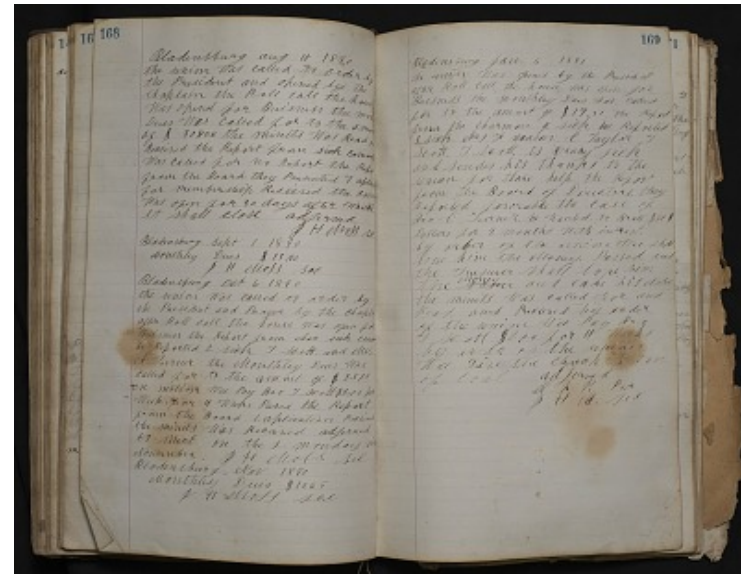
[[end page]]

[[start page]]

[[in blue stamped]] 169 [[/in blue stamped]]

Bladensburg Jan 5 1891

the union Was opened by the President after Roll Call the house Was open for Buisness the Monthly Dues was called for to the amont of \$17.00 the Report from the Charman of sick he Reported 3 sick Mrs F Mason, C Taylor, T Scott. T. Scott, is veary sick and sendes his thanks to the union for thare help the Report from the Board of directors. They Reported favorable the case of Bro C Turner. he wanted to B[[?]] \$50 \$ Dollars for 9. months With intrest. by order of the union Wee shall lone him the Money. Passed and the Treasurer shall lone him the ~~minits~~ Money and take his Note the minits Was called for and Read. and recieved by order of the union W[[?]] Pay Aug T Scott \$2.00 for 4 weeks by order [[?]] the union Will give the Church 1/2 ton of coal adjerned
H T. P. P[[?]]
J H [[?]]H. sec



Bladensburg Union Burial Association Records, Membership dues record book, 1874-1898
Transcribed and Reviewed by Digital Volunteers
Extracted Apr-18-2024 10:32:46



Smithsonian Institution

Anacostia Community Museum Archives

The mission of the Smithsonian is the increase and diffusion of knowledge - shaping the future by preserving our heritage, discovering new knowledge, and sharing our resources with the world. Founded in 1846, the Smithsonian is the world's largest museum and research complex, consisting of 19 museums and galleries, the National Zoological Park, and nine research facilities. Become an active part of our mission through the Transcription Center. Together, we are discovering secrets hidden deep inside our collections that illuminate our history and our world.

Join us!

The Transcription Center: <https://transcription.si.edu>

On Facebook: <https://www.facebook.com/SmithsonianTranscriptionCenter>

On Twitter: [@TranscribeSI](https://twitter.com/TranscribeSI)

Connect with the Smithsonian

Smithsonian Institution: www.si.edu

On Facebook: <https://www.facebook.com/Smithsonian>

On Twitter: [@smithsonian](https://twitter.com/smithsonian)