



Smithsonian Institution

National Museum of the American Indian Archives Center

Elayne Zorn Collection - Taquile: Field Notes, 1975-1977

Extracted on Apr-18-2024 01:41:13

The Smithsonian Institution thanks all digital volunteers that transcribed and reviewed this material. Your work enriches Smithsonian collections, making them available to anyone with an interest in using them.

The Smithsonian Institution (the "Smithsonian") provides the content on this website (transcription.si.edu), other Smithsonian websites, and third-party sites on which it maintains a presence ("SI Websites") in support of its mission for the "increase and diffusion of knowledge." The Smithsonian invites visitors to use its online content for personal, educational and other non-commercial purposes. By using this website, you accept and agree to abide by the [following terms](#).

- If sharing the material in personal and educational contexts, please cite the National Museum of the American Indian Archives Center as source of the content and the project title as provided at the top of the document. Include the accession number or collection name; when possible, link to the National Museum of the American Indian Archives Center website.
- If you wish to use this material in a for-profit publication, exhibition, or online project, please contact National Museum of the American Indian Archives Center or transcribe@si.edu

For more information on this project and related material, contact the National Museum of the American Indian Archives Center. [See this project](#) and other collections in the Smithsonian Transcription Center.

11.

(17)

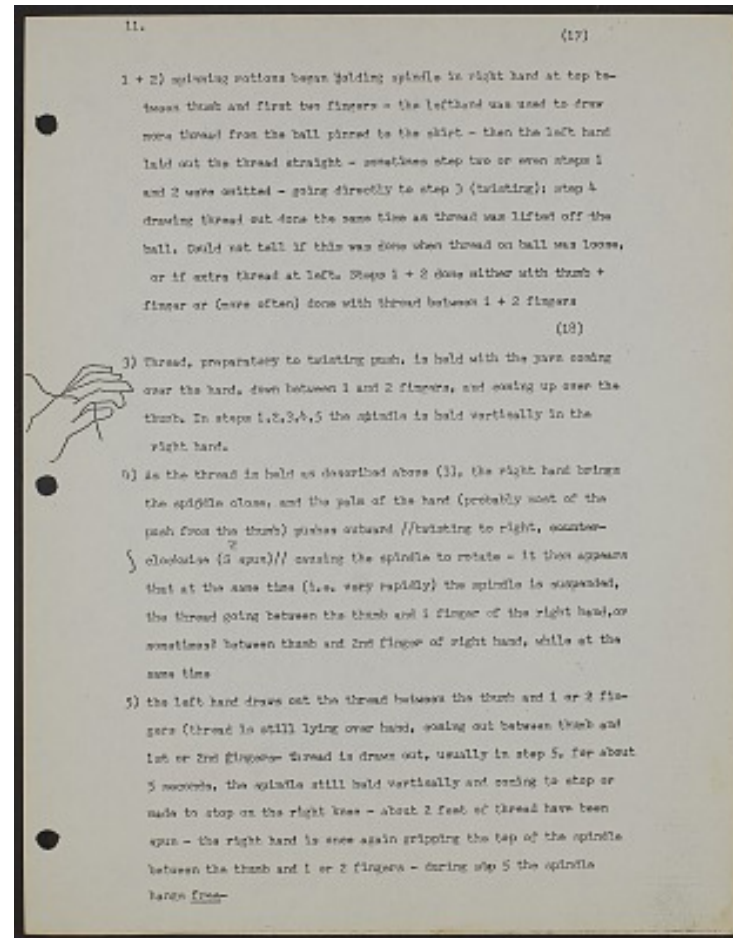
1+2) spinning motions began holding spindle in right hand at top between thumb and first two fingers - the lefthand was used to draw more thread from the ball pinned to the skirt - then the left hand laid out the thread straight - sometimes step two or even steps 1 and 2 were omitted - going directly to step 3 (twisting); step 4 drawing thread out done the same time as thread was lifted off the ball. Could not tell if this was done when thread on ball was loose, or if extra thread at left. Steps 1 + 2 done either with thumb + finger or (more often) done with thread between 1 + 2 fingers (18)

[[image - drawing of a left hand held up, the thread is shown going from left to right across hand, but is caught under the index (1st) finger of the hand]]

3) Thread, preparatory to twisting push, is held with the yarn coming over the hand, down between 1 and 2 fingers, and coming up over the thumb. In steps 1,2,3,4,5 the spindle is held vertically in the right hand.

4) As the thread is held as described above (3), the right hand brings the spindle close, and the palm of the hand (probably most of the push from the thumb) pushes outward // twisting to right, ~~counter-~~ clockwise (S spun) // causing the spindle to rotate - it then appears that at the same time (i.e. very rapidly) the spindle is suspended, the thread going between the thumb and 1 finger of the right hand, or sometimes? between thumb and 2nd finger of right hand, while at the same time

5) the left hand draws out the thread between the thumb and 1 or 2 fingers (thread is still lying over hand, coming out between thumb and 1st or 2nd fingers- thread is drawn out, usually in step 5, for about 5 seconds, the spindle still held vertically and coming to stop or made to stop on the right knee - about 2 feet of thread have been spun - the right hand is once again gripping the top of the spindle between the thumb and 1 or 2 fingers - during step 5 the spindle hangs free)-



Elayne Zorn Collection - Taquile: Field Notes, 1975-1977
Transcribed and Reviewed by Digital Volunteers
Extracted Apr-18-2024 01:41:13



Smithsonian Institution

National Museum of the American Indian Archives Center

The mission of the Smithsonian is the increase and diffusion of knowledge - shaping the future by preserving our heritage, discovering new knowledge, and sharing our resources with the world. Founded in 1846, the Smithsonian is the world's largest museum and research complex, consisting of 19 museums and galleries, the National Zoological Park, and nine research facilities. Become an active part of our mission through the Transcription Center. Together, we are discovering secrets hidden deep inside our collections that illuminate our history and our world.

Join us!

The Transcription Center: <https://transcription.si.edu>

On Facebook: <https://www.facebook.com/SmithsonianTranscriptionCenter>

On Twitter: [@TranscribeSI](https://twitter.com/TranscribeSI)

Connect with the Smithsonian

Smithsonian Institution: www.si.edu

On Facebook: <https://www.facebook.com/Smithsonian>

On Twitter: [@smithsonian](https://twitter.com/smithsonian)