



Smithsonian Institution

Smithsonian Institution Archives

Proceedings of the Board of Regents Meeting held on January 28, 1980

Extracted on Apr-19-2024 03:43:31

The Smithsonian Institution thanks all digital volunteers that transcribed and reviewed this material. Your work enriches Smithsonian collections, making them available to anyone with an interest in using them.

The Smithsonian Institution (the "Smithsonian") provides the content on this website (transcription.si.edu), other Smithsonian websites, and third-party sites on which it maintains a presence ("SI Websites") in support of its mission for the "increase and diffusion of knowledge." The Smithsonian invites visitors to use its online content for personal, educational and other non-commercial purposes. By using this website, you accept and agree to abide by the [following terms](#).

- If sharing the material in personal and educational contexts, please cite the Smithsonian Institution Archives as source of the content and the project title as provided at the top of the document. Include the accession number or collection name; when possible, link to the Smithsonian Institution Archives website.
- If you wish to use this material in a for-profit publication, exhibition, or online project, please contact Smithsonian Institution Archives or transcribe@si.edu

For more information on this project and related material, contact the Smithsonian Institution Archives. [See this project](#) and other collections in the Smithsonian Transcription Center.

to provide, over the long run, quality research facilities including a greenhouse and controlled laboratory space for experimenting with plant growth. The Laboratory has not had adequate facilities for this purpose for the last nine years. A small greenhouse with limited capabilities may be installed by the General Services Administration on the leased property in the next two or three years as an interim measure. The Laboratory has obtained a similar facility on loan from the National Naval Medical Center in Bethesda, Maryland. Over the years, however, the research programs have been hampered by the lack of a fully equipped scientific facility. Correcting that situation and providing a permanent relocation are long-term objectives.

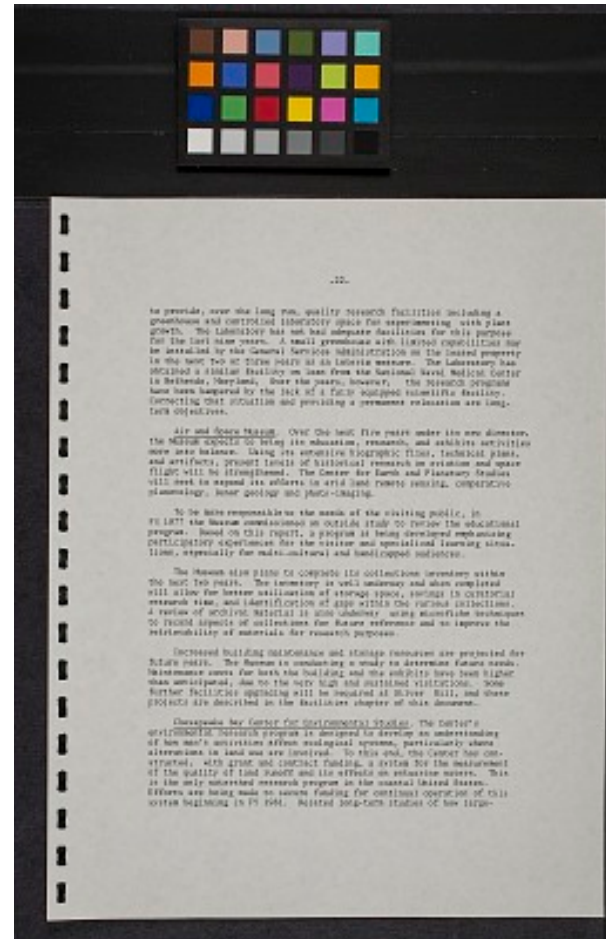
Air and Space Museum. Over the next five years under its new director, the Museum expects to bring its education, research, and exhibits activities more into balance. Using its extensive biographic files, technical plans, and artifacts, present levels of historical research on aviation and space flight will be strengthened. The Center for Earth and Planetary Studies will seek to expand its efforts in Aris land remote sensing, comparative planetology, lunar geology and photo-imaging.

To be more responsible to the needs of the visiting public, in FY 1977 the Museum commissioned an outside study to review the educational program. Based on this report, a program is being developed emphasizing participatory experiences for the visitor and specialized learning situations, especially for multi-cultural and handicapped audiences.

The Museum also plans to complete its collections inventory within the next two years. The inventory is well underway and when completed will allow for better utilization of storage space, savings in curatorial research time, and identification of gaps within the various collections. A review of archival material is also underway using microfiche techniques to record aspects of collections for future reference and to improve the retrievability of materials for research purposes.

Increased building maintenance and storage resources are projected for future years. The Museum is conducting a study to determine future needs. Maintenance costs for both the building and the exhibits have been higher than anticipated, due to the very high and sustained visitations. Some further facilities upgrading will be required at Silver Hill, and these projects are described in the facilities chapter of this document.

Chesapeake Bay Center for Environmental Studies. The Center's environmental research program is designed to develop an understanding of how man's activities affect ecological systems, particularly where alterations in land use are involved. To this end, the Center has constructed, with grant and contract funding, a system for the measurement of the quality of land runoff and its effects on estuarine waters. This is the only watershed research program in the coastal United States. Efforts are being made to secure funding for continual operation of this system beginning in FY 1981. Related long-term studies of how large-



Proceedings of the Board of Regents Meeting held on January 28, 1980
Transcribed and Reviewed by Digital Volunteers
Extracted Apr-19-2024 03:43:31



Smithsonian Institution

Smithsonian Institution Archives

The mission of the Smithsonian is the increase and diffusion of knowledge - shaping the future by preserving our heritage, discovering new knowledge, and sharing our resources with the world. Founded in 1846, the Smithsonian is the world's largest museum and research complex, consisting of 19 museums and galleries, the National Zoological Park, and nine research facilities. Become an active part of our mission through the Transcription Center. Together, we are discovering secrets hidden deep inside our collections that illuminate our history and our world.

Join us!

The Transcription Center: <https://transcription.si.edu>

On Facebook: <https://www.facebook.com/SmithsonianTranscriptionCenter>

On Twitter: [@TranscribeSI](https://twitter.com/TranscribeSI)

Connect with the Smithsonian

Smithsonian Institution: www.si.edu

On Facebook: <https://www.facebook.com/Smithsonian>

On Twitter: [@smithsonian](https://twitter.com/smithsonian)