



**Smithsonian Institution**

*Smithsonian Institution Archives*

## **Proceedings of the Board of Regents Meeting held on September 22, 1980**

Extracted on Apr-17-2024 09:27:19

**The Smithsonian Institution thanks all digital volunteers that transcribed and reviewed this material. Your work enriches Smithsonian collections, making them available to anyone with an interest in using them.**

The Smithsonian Institution (the "Smithsonian") provides the content on this website ([transcription.si.edu](https://transcription.si.edu)), other Smithsonian websites, and third-party sites on which it maintains a presence ("SI Websites") in support of its mission for the "increase and diffusion of knowledge." The Smithsonian invites visitors to use its online content for personal, educational and other non-commercial purposes. By using this website, you accept and agree to abide by the [following terms](#).

- If sharing the material in personal and educational contexts, please cite the Smithsonian Institution Archives as source of the content and the project title as provided at the top of the document. Include the accession number or collection name; when possible, link to the Smithsonian Institution Archives website.
- If you wish to use this material in a for-profit publication, exhibition, or online project, please contact Smithsonian Institution Archives or [transcribe@si.edu](mailto:transcribe@si.edu)

For more information on this project and related material, contact the Smithsonian Institution Archives. [See this project](#) and other collections in the Smithsonian Transcription Center.

# SMITHSONIAN INSTITUTION

BOARD OF REGENTS----Under Separate Boards of Trustees:  
 --JOHN F. KENNEDY CENTER FOR THE PERFORMING

ARTS

--NATIONAL GALLERY OF ART  
 --WOODROW WILSON INTERNATIONAL CENTER FOR

SCHOLARS

THE SECRETARY\*

UNDER SECRETARY\*

--TREASURER\*  
 --Accounting Office  
 --Office of Grants and Risk Management  
 --Investment Accounting Division  
 --Business Management Office  
 --Concessions  
 --Mail Order Division  
 --Smithsonian Museum Shops

--GENERAL COUNSEL\*

--COORDINATOR OF PUBLIC INFORMATION\*

--Office of Congressional liaison  
 --Office of Public Affairs  
 --Office of Special Events

--Director of MEMBERSHIP AND DEVELOPMENT\*

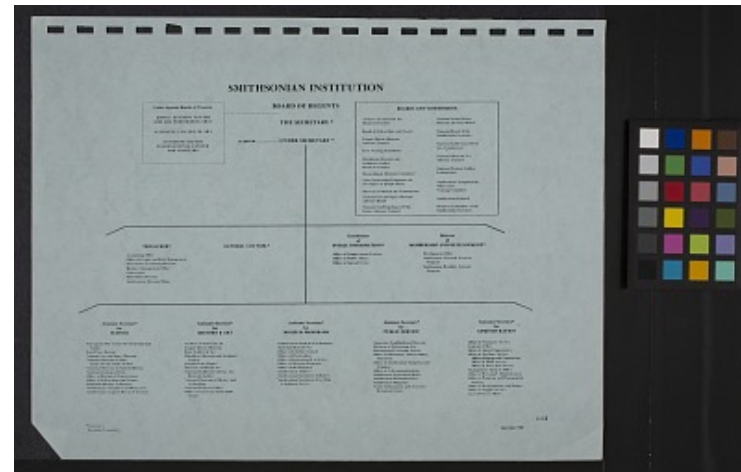
--Development Office  
 --Smithsonian National Associate Program  
 --National Resident Associate Program

--Assistant Secretary\* for SCIENCE

--Chesapeake Bay Center for Environmental Studies  
 --Fort Pierce Bureau  
 --National Air and Space Museum  
 --National Museum of Man  
 ---Center for the Study of Man  
 --National Museum of Natural History  
 --National Zoological Park  
 --Office of Biological Conservation  
 --Office of Fellowships and Grants  
 --Radiation Biology Laboratory  
 --Smithsonian Astrophysical Observatory  
 --Smithsonian Tropical Research Institute

--Assistant Secretary\* for HISTORY & ART

--Archives of American Art  
 --Cooper-Hewitt Museum  
 --Freer Gallery of Art  
 --Hirshhorn Museum and Sculpture Garden  
 --Joseph Henry Papers  
 --Museum of African Art  
 --National Collection of Fine Arts  
 ---Renwick Gallery



- National Museum of History and Technology
- National Portrait Gallery
- Office of American and Folklife Studies

-Assistant Secretary\* for MUSEUM PROGRAMS

- Conservation Analytical Laboratory
- National Museum Act
- Office of Exhibits Central
- Office of Horticulture
- Office of International Activities
- Office of Museum Programs
- Office of the Registrar
- Smithsonian Archives
- Smithsonian Institution Libraries
- Smithsonian Institution Traveling
- Exhibition Service

-Assistant Secretary\* for PUBLIC SERVICE

- Anacostia Neighborhood Museum
- Division of Performing Arts
- International Exchange Service
- Office of Elementary and Secondary Education
- Office of Smithsonian Symposia and Seminars
- Office of Telecommunications
- Smithsonian Exposition Books
- Smithsonian Institution Press
- Smithsonian Magazine
- Visitor Information and Associates Reception Center

-Assistant Secretary\* for ADMINISTRATION

- Office of Computer Services
- Contracts Office
- Office of Equal Opportunity
- Office of Facilities Services
- Office of Design and Construction
- Office of Plant Services
- Office of Protection Services
- Management analysis Office
- Office of Personnel Administration
- Office of Printing and Photographic Services
- Office of Programming and Budget
- Office of Supply Services
- Travel Services Office

BOARDS AND COMMISSIONS

- Archives of American Art Board of Trustees
- Board of Fellowships and Grants
- Freer Visiting Committee
- Hirshhorn Museum and Sculpture Garden Board of Trustees
- Horticultural Advisory Committee
- Joint Sponsoring Committee for the Papers of Joseph Henry
- Museum of African Art Commission
- National Air and Space Museum Advisory Board
- National Anthropological Film Center Advisory Council
- National Armed Forces Museum Advisory Board
- National Board of the Smithsonian Associates
- National Collection of Fine Arts Commission
- National Museum Act Advisory Council
- National Portrait Gallery Commission

- Smithsonian Astrophysical Observatory Visiting Committee
- Smithsonian Council
- Women's Committee of the Smithsonian Associates

\*Secretary's Executive Committee  
September 1980

114

Proceedings of the Board of Regents Meeting held on September 22, 1980  
Transcribed and Reviewed by Digital Volunteers  
Extracted Apr-17-2024 09:27:19



## Smithsonian Institution

*Smithsonian Institution Archives*

The mission of the Smithsonian is the increase and diffusion of knowledge - shaping the future by preserving our heritage, discovering new knowledge, and sharing our resources with the world. Founded in 1846, the Smithsonian is the world's largest museum and research complex, consisting of 19 museums and galleries, the National Zoological Park, and nine research facilities. Become an active part of our mission through the Transcription Center. Together, we are discovering secrets hidden deep inside our collections that illuminate our history and our world.

Join us!

The Transcription Center: <https://transcription.si.edu>

On Facebook: <https://www.facebook.com/SmithsonianTranscriptionCenter>

On Twitter: [@TranscribeSI](https://twitter.com/TranscribeSI)

Connect with the Smithsonian

Smithsonian Institution: [www.si.edu](http://www.si.edu)

On Facebook: <https://www.facebook.com/Smithsonian>

On Twitter: [@smithsonian](https://twitter.com/smithsonian)