



**Smithsonian Institution**

*Smithsonian Institution Archives*

## **Proceedings of the Board of Regents Meeting held on January 26, 1981**

Extracted on Mar-29-2024 09:26:56

**The Smithsonian Institution thanks all digital volunteers that transcribed and reviewed this material. Your work enriches Smithsonian collections, making them available to anyone with an interest in using them.**

The Smithsonian Institution (the "Smithsonian") provides the content on this website ([transcription.si.edu](https://transcription.si.edu)), other Smithsonian websites, and third-party sites on which it maintains a presence ("SI Websites") in support of its mission for the "increase and diffusion of knowledge." The Smithsonian invites visitors to use its online content for personal, educational and other non-commercial purposes. By using this website, you accept and agree to abide by the [following terms](#).

- If sharing the material in personal and educational contexts, please cite the Smithsonian Institution Archives as source of the content and the project title as provided at the top of the document. Include the accession number or collection name; when possible, link to the Smithsonian Institution Archives website.
- If you wish to use this material in a for-profit publication, exhibition, or online project, please contact Smithsonian Institution Archives or [transcribe@si.edu](mailto:transcribe@si.edu)

For more information on this project and related material, contact the Smithsonian Institution Archives. [See this project](#) and other collections in the Smithsonian Transcription Center.

Quadrangle Development

Noting the historical significance of the "Smithsonian Park" and its suitability for underground development, the Secretary discussed the revised model of the Quadrangle and the need for facilities to accommodate a Center for Eastern Art, the Museum of African Art, the Smithsonian Institution Traveling Exhibition Service, the Resident and National Associates programs, and kindred activities. He reported that inflating construction costs are necessitating reconfigurations of the proposed structure and that every effort is being made to stay within the estimate.

The report on the Quadrangle notes revisions to the plans, the negative recommendations of the Joint Committee on Landmarks and the approval of the concept by the National Capital Planning Commission. It was reported that a "Friends of the Smithsonian Institution" committee had been formed in Japan for the purpose of raising funds from corporations, and a domestic committee has been formed to solicit funds from U.S. corporations. Memberships of the committees are listed. A committee to raise funds for the new Museum of African Art is to be organized early in the year.

The Institution's budget request for FY 1982 includes \$24,135,000 for Quadrangle construction, for which authorizing legislation will be introduced in the Congress, as approved by the Regents in September 1980.

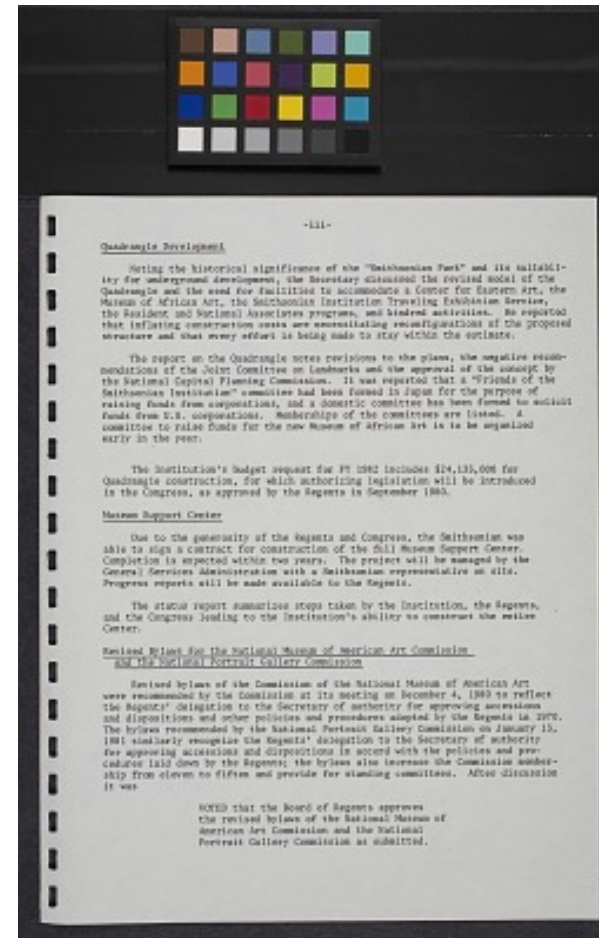
Museum Support Center

Due to the generosity of the Regents and Congress, the Smithsonian was able to sign a contract for construction of the full Museum Support Center. Completion is expected within two years. The project will be managed by the General Services Administration with a Smithsonian representative on site. Progress reports will be made available to the Regents.

The status report summarizes steps taken by the Institution, the Regents, and the Congress leading to the Institution's ability to construct the entire Center.

Revised Bylaws for the National Museum of American Art Commission and the National Portrait Gallery Commission

Revised bylaws of the Commission of the National Museum of American Art were recommended by the Commission at its meeting on December 4, 1980 to reflect the Regents' delegation to the Secretary of authority for approving accessions and dispositions and other policies and procedures adopted by the Regents in 1970. The bylaws recommended by the National Portrait Gallery Commission on January 13, 1981 similarly recognize the Regents' delegation to the Secretary of authority for approving accessions and dispositions in accord with the policies and procedures laid down by the Regents; the bylaws also increase the Commission membership from eleven to fifteen and provide for standing committees. After discussion it was



VOTED that the Board of Regents approves the revised bylaws of the National Museum of American Art Commission and the National Portrait Gallery Commission as submitted.

Proceedings of the Board of Regents Meeting held on January 26, 1981  
Transcribed and Reviewed by Digital Volunteers  
Extracted Mar-29-2024 09:26:56



## Smithsonian Institution

*Smithsonian Institution Archives*

The mission of the Smithsonian is the increase and diffusion of knowledge - shaping the future by preserving our heritage, discovering new knowledge, and sharing our resources with the world. Founded in 1846, the Smithsonian is the world's largest museum and research complex, consisting of 19 museums and galleries, the National Zoological Park, and nine research facilities. Become an active part of our mission through the Transcription Center. Together, we are discovering secrets hidden deep inside our collections that illuminate our history and our world.

Join us!

The Transcription Center: <https://transcription.si.edu>

On Facebook: <https://www.facebook.com/SmithsonianTranscriptionCenter>

On Twitter: [@TranscribeSI](https://twitter.com/TranscribeSI)

Connect with the Smithsonian

Smithsonian Institution: [www.si.edu](http://www.si.edu)

On Facebook: <https://www.facebook.com/Smithsonian>

On Twitter: [@smithsonian](https://twitter.com/smithsonian)