



Smithsonian Institution

Smithsonian Institution Archives

Proceedings of the Board of Regents Meeting held on January 26, 1981

Extracted on Apr-16-2024 08:28:30

The Smithsonian Institution thanks all digital volunteers that transcribed and reviewed this material. Your work enriches Smithsonian collections, making them available to anyone with an interest in using them.

The Smithsonian Institution (the "Smithsonian") provides the content on this website (transcription.si.edu), other Smithsonian websites, and third-party sites on which it maintains a presence ("SI Websites") in support of its mission for the "increase and diffusion of knowledge." The Smithsonian invites visitors to use its online content for personal, educational and other non-commercial purposes. By using this website, you accept and agree to abide by the [following terms](#).

- If sharing the material in personal and educational contexts, please cite the Smithsonian Institution Archives as source of the content and the project title as provided at the top of the document. Include the accession number or collection name; when possible, link to the Smithsonian Institution Archives website.
- If you wish to use this material in a for-profit publication, exhibition, or online project, please contact Smithsonian Institution Archives or transcribe@si.edu

For more information on this project and related material, contact the Smithsonian Institution Archives. [See this project](#) and other collections in the Smithsonian Transcription Center.

The Center has accomplished the first and second phases of its six-phase plan for facilities development with the completion of the new shop building in early FY 1981. The first phase, consisting of a laboratory wing, was completed in FY 1980. Construction funds will be sought for the remaining development, a combined administrative and research facility and a small dormitory for students and visiting scientists. More information on planned facilities is contained in the Facilities chapter of this document.

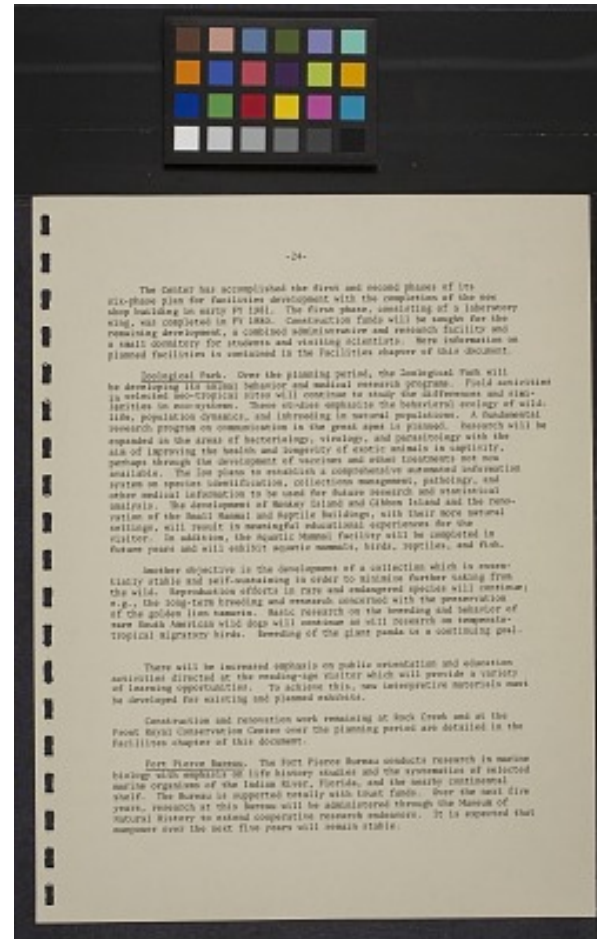
Zoological Park. Over the planning period, the Zoological Park will be developing its animal behavior and medical research programs. Field activities in selected net-tropical sites will continue to study the differences and similarities in eco-systems. These studies emphasize the behavioral ecology of wildlife, population dynamics, and inbreeding in natural populations. A fundamental research program on communication in the great apes is planned. Research will be expanded in the areas of bacteriology, virology, and parasitology with the aim of improving the health and longevity of exotic animals in captivity, perhaps through the development of vaccines and other treatments not now available. The Zoo plans to establish a comprehensive automated information system on species identification, collections management, pathology, and other medical information to be used for future research and statistical analysis. The development of Monkey Island and Gibbon Island and the renovation of the Small Mammal and Reptile Buildings, with their more natural settings, will result in meaningful educational experiences for the visitor. In addition, the Aquatic Mammal facility will be completed in future years and will exhibit aquatic mammals, birds, reptiles, and fish.

Another objective is the development of a collection which is essentially stable and self-sustaining in order to minimize further taking from the wild. Reproduction efforts in rare and endangered species will continue; e.g., the long-term breeding and research concerned with the preservation of the golden lion tamarin. Basic research on the breeding and behavior of rare South American wild dogs will continue as will research on temperate-tropical migratory birds. Breeding of the giant panda is a continuing goal.

There will be increased emphasis on public orientation and education activities directed at the reading-age visitor which will provide a variety of learning opportunities. To achieve this, new interpretive materials must be developed for existing and planned exhibits.

Construction and renovation work remaining at Rock Creek and at the Front Royal Conservation Center over the planning period are detailed in the Facilities chapter of this document.

Fort Pierce Bureau. The Fort Pierce Bureau conducts research in marine biology with emphasis on life history studies and the systematics of selected marine organisms of the Indian River, Florida, and the nearby continental shelf. The Bureau is supported totally with trust funds. Over the next five years, research at this Bureau will be administered through the Museum of Natural History to extend cooperative research endeavors. It is expected that manpower over the next five years will remain stable.



Proceedings of the Board of Regents Meeting held on January 26, 1981
Transcribed and Reviewed by Digital Volunteers
Extracted Apr-16-2024 08:28:30



Smithsonian Institution

Smithsonian Institution Archives

The mission of the Smithsonian is the increase and diffusion of knowledge - shaping the future by preserving our heritage, discovering new knowledge, and sharing our resources with the world. Founded in 1846, the Smithsonian is the world's largest museum and research complex, consisting of 19 museums and galleries, the National Zoological Park, and nine research facilities. Become an active part of our mission through the Transcription Center. Together, we are discovering secrets hidden deep inside our collections that illuminate our history and our world.

Join us!

The Transcription Center: <https://transcription.si.edu>

On Facebook: <https://www.facebook.com/SmithsonianTranscriptionCenter>

On Twitter: [@TranscribeSI](https://twitter.com/TranscribeSI)

Connect with the Smithsonian

Smithsonian Institution: www.si.edu

On Facebook: <https://www.facebook.com/Smithsonian>

On Twitter: [@smithsonian](https://twitter.com/smithsonian)