



Smithsonian Institution

Smithsonian Institution Archives

Proceedings of the Board of Regents Meeting held on September 20, 1982

Extracted on Apr-24-2024 01:50:01

The Smithsonian Institution thanks all digital volunteers that transcribed and reviewed this material. Your work enriches Smithsonian collections, making them available to anyone with an interest in using them.

The Smithsonian Institution (the "Smithsonian") provides the content on this website (transcription.si.edu), other Smithsonian websites, and third-party sites on which it maintains a presence ("SI Websites") in support of its mission for the "increase and diffusion of knowledge." The Smithsonian invites visitors to use its online content for personal, educational and other non-commercial purposes. By using this website, you accept and agree to abide by the [following terms](#).

- If sharing the material in personal and educational contexts, please cite the Smithsonian Institution Archives as source of the content and the project title as provided at the top of the document. Include the accession number or collection name; when possible, link to the Smithsonian Institution Archives website.
- If you wish to use this material in a for-profit publication, exhibition, or online project, please contact Smithsonian Institution Archives or transcribe@si.edu

For more information on this project and related material, contact the Smithsonian Institution Archives. [See this project](#) and other collections in the Smithsonian Transcription Center.

SMITHSONIAN INSTITUTION

[[diagram: organizational chart (reverse tree shape) with 3 entries on top branch, 4 entries on middle branch, 5 entries on bottom branch. Entries listed top left to right, then bottom left to right]]

[[top branch]]

[[entry 1]]

BOARD OF REGENTS

[[/entry 1]]

[[side box, coming from BOARD OF REGENTS]]

[[dotted line]]

Under Separate Boards of Trustees:

JOHN F. KENNEDY CENTER FOR THE PERFORMING ARTS

NATIONAL GALLERY OF ART

WOODROW WILSON INTERNATIONAL CENTER FOR SCHOLARS

[[/side box]]

[[entry 2]]

THE SECRETARY*

[[/entry 2]]

[[entry 3]]

UNDER SECRETARY*

[[/entry 3]]

[[side box, coming from UNDER SECRETARY]]

[[horizontal line]]

AUDITOR

[[/side box]]

[[/top branch]]

[[boxed]]

BOARDS AND COMMISSIONS

[[left column]]

Archives of American Art Board of Trustees

Board of Fellowships and Grants

Cooper-Hewitt Museum Advisory Council

Folklife Advisory Council

Freer Visiting Committee

Hirshhorn Museum and Sculpture Garden Board of Trustees

Horticultural Advisory Committee

Joint Sponsoring Committee for the Papers of Joseph Henry

National Air and Space Museum Advisory Board

[[/left column]]

[[right column]]

National Armed Forces Museum Advisory Board

National Board of the Smithsonian Associates

National Museum Act Advisory Council

National Museum of African Art Commission

National Museum of American Art Commission

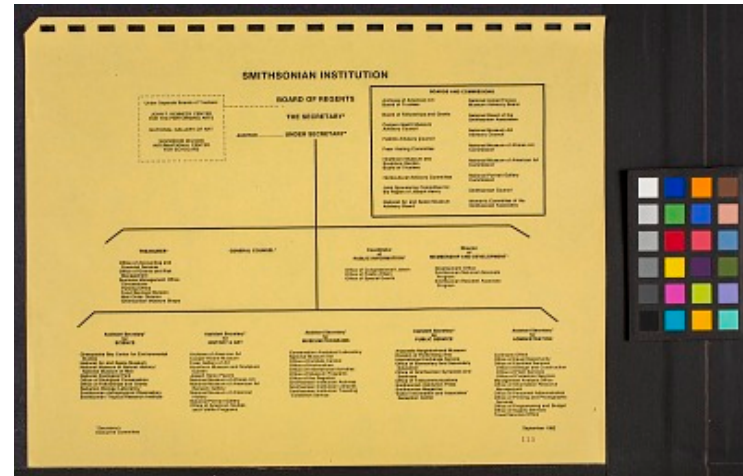
National Portrait Gallery Commission

Smithsonian Council

Women's Committee of the Smithsonian Associates

[[/right column]]

[[/boxed]]



[[middle branch]]

[[entry 1]]

TREASURER*

Office of Accounting and Financial Services

Office of Grants and Risk Management

Business Management Office

Concessions

Parking Office

Food Services Division

Mail Order Division

Smithsonian Museum Shops

[[/entry 1]]

[[entry 2]]

GENERAL COUNSEL*

[[/entry 2]]

[[entry 3]]

Coordinator of PUBLIC INFORMATION*

Office of Congressional Liaison

Office of Public Affairs

Office of Special Events

[[/entry 3]]

[[entry 4]]

Director of MEMBERSHIP AND DEVELOPMENT*

Development Office

Smithsonian National Associate Program

Smithsonian Resident Associate Program

[[/entry 4]]

[[/middle branch]]

[[bottom branch]]

[[entry 1]]

Assistant Secretary* for SCIENCE

Chesapeake Bay Center for Environmental Studies

National Air and Space Museum

National Museum of Natural History/

National Museum of Man

National Zoological Park

Office of Biological Conservation

Office of Fellowships and Grants

Radiation Biology Laboratory

Smithsonian Astrophysical Observatory

Smithsonian Tropical Research Institute

[[/entry 1]]

[[entry 2]]

Assistant Secretary* for HISTORY & ART

Archives of American Art

Cooper-Hewitt Museum

Freer Gallery of Art

Hirshhorn Museum and Sculpture Garden

Joseph Henry Papers

National Museum of African Art

National Museum of American Art

Renwick Gallery

National Museum of American History
National Portrait Gallery
Office of American Studies and Folklife Programs
[[/entry 2]]

[[entry 3]]
Assistant Secretary* for MUSEUM PROGRAMS
Conservation Analytical Laboratory
National Museum Act
Office of Exhibits Central
Office of Horticulture
Office of International Activities
Office of Museum Programs
Office of the Registrar
Smithsonian Institution Archives
Smithsonian Institution Libraries
Smithsonian Institution Traveling Exhibition Service
[[/entry 3]]

[[entry 4]]
Assistant Secretary* for PUBLIC SERVICE
Anacostia Neighborhood Museum
Division of Performing Arts
International Exchange Service
Office of Elementary and Secondary Education
Office of Smithsonian Symposia and Seminars
Office of Telecommunications
Smithsonian Institution Press
Smithsonian Magazine
Visitor Information and Associates' Reception Center
[[/entry 4]]

[[entry 5]]
Assistant Secretary* for ADMINISTRATION
Contracts Office
Office for Equal Opportunity
Office of Facilities Services
Office of Design and Construction
Office of Plant Services
Office of Protection Services
Management Analysis Office
Office of Information Resource Management
Office of Personnel Administration
Office of Printing and Photographic Services
Office of Programming and Budget
Office of Supply Services
Travel Services Office
[[/entry 5]]
[[/bottom branch]]

[[/diagram]]

*Secretary's Executive Committee

September 1982

[[typed]]
133

[[/typed]]

Proceedings of the Board of Regents Meeting held on September 20, 1982
Transcribed and Reviewed by Digital Volunteers
Extracted Apr-24-2024 01:50:01



Smithsonian Institution

Smithsonian Institution Archives

The mission of the Smithsonian is the increase and diffusion of knowledge - shaping the future by preserving our heritage, discovering new knowledge, and sharing our resources with the world. Founded in 1846, the Smithsonian is the world's largest museum and research complex, consisting of 19 museums and galleries, the National Zoological Park, and nine research facilities. Become an active part of our mission through the Transcription Center. Together, we are discovering secrets hidden deep inside our collections that illuminate our history and our world.

Join us!

The Transcription Center: <https://transcription.si.edu>

On Facebook: <https://www.facebook.com/SmithsonianTranscriptionCenter>

On Twitter: [@TranscribeSI](https://twitter.com/TranscribeSI)

Connect with the Smithsonian

Smithsonian Institution: www.si.edu

On Facebook: <https://www.facebook.com/Smithsonian>

On Twitter: [@smithsonian](https://twitter.com/smithsonian)