



Smithsonian Institution

Smithsonian Institution Archives

Proceedings of the Board of Regents Meeting held on September 19, 1983

Extracted on Mar-28-2024 04:06:30

The Smithsonian Institution thanks all digital volunteers that transcribed and reviewed this material. Your work enriches Smithsonian collections, making them available to anyone with an interest in using them.

The Smithsonian Institution (the "Smithsonian") provides the content on this website (transcription.si.edu), other Smithsonian websites, and third-party sites on which it maintains a presence ("SI Websites") in support of its mission for the "increase and diffusion of knowledge." The Smithsonian invites visitors to use its online content for personal, educational and other non-commercial purposes. By using this website, you accept and agree to abide by the [following terms](#).

- If sharing the material in personal and educational contexts, please cite the Smithsonian Institution Archives as source of the content and the project title as provided at the top of the document. Include the accession number or collection name; when possible, link to the Smithsonian Institution Archives website.
- If you wish to use this material in a for-profit publication, exhibition, or online project, please contact Smithsonian Institution Archives or transcribe@si.edu

For more information on this project and related material, contact the Smithsonian Institution Archives. [See this project](#) and other collections in the Smithsonian Transcription Center.

Museum Support Center and Collections Management

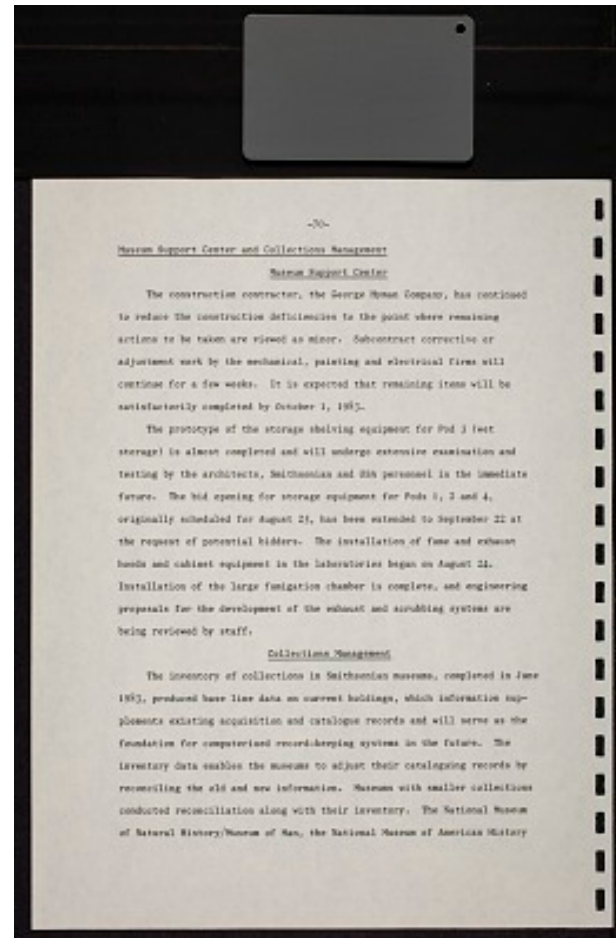
Museum Support Center

The construction contractor, the George Hyman Company, has continued to reduce the construction deficiencies to the point where remaining actions to be taken are viewed as minor. Subcontract corrective or adjustment work by the mechanical, painting and electric firms will continue for a few weeks. It is expected that remaining items will be satisfactorily completed by October 1, 1983.

The prototype of the storage shelving equipment for Pod 3 (wet storage) is almost completed and will undergo extensive examination and testing by the architects, Smithsonian and GSA personnel in the immediate future. The bid opening for storage equipment for Pods 1, 2 and 4, originally scheduled for August 25, has been extended to September 22 at the request of potential bidders. The installation of fume and exhaust hoods and cabinet equipment in the laboratories began on August 24. Installation of the large fumigation chamber is complete, and engineering proposals for the development of the exhaust and scrubbing systems are being reviewed by staff.

Collections Management

The inventory of collections in Smithsonian museums, completed in June 1983, produced base line data on current holdings, which information supplements existing acquisitions and catalogue records and will serve as the foundation for computerized record-keeping systems in the future. The inventory data enables the museum to adjust their cataloguing records by reconciling the old and new information. Museums with smaller collections conducted reconciliation along with their inventory. The National Museum of Natural History/Museum of Man, the National Museum of American History



Proceedings of the Board of Regents Meeting held on September 19, 1983
Transcribed and Reviewed by Digital Volunteers
Extracted Mar-28-2024 04:06:30



Smithsonian Institution

Smithsonian Institution Archives

The mission of the Smithsonian is the increase and diffusion of knowledge - shaping the future by preserving our heritage, discovering new knowledge, and sharing our resources with the world. Founded in 1846, the Smithsonian is the world's largest museum and research complex, consisting of 19 museums and galleries, the National Zoological Park, and nine research facilities. Become an active part of our mission through the Transcription Center. Together, we are discovering secrets hidden deep inside our collections that illuminate our history and our world.

Join us!

The Transcription Center: <https://transcription.si.edu>

On Facebook: <https://www.facebook.com/SmithsonianTranscriptionCenter>

On Twitter: [@TranscribeSI](https://twitter.com/TranscribeSI)

Connect with the Smithsonian

Smithsonian Institution: www.si.edu

On Facebook: <https://www.facebook.com/Smithsonian>

On Twitter: [@smithsonian](https://twitter.com/smithsonian)