



Smithsonian Institution

Smithsonian Institution Archives

Proceedings of the Board of Regents Meeting held on January 23, 1984

Extracted on Mar-29-2024 03:33:45

The Smithsonian Institution thanks all digital volunteers that transcribed and reviewed this material. Your work enriches Smithsonian collections, making them available to anyone with an interest in using them.

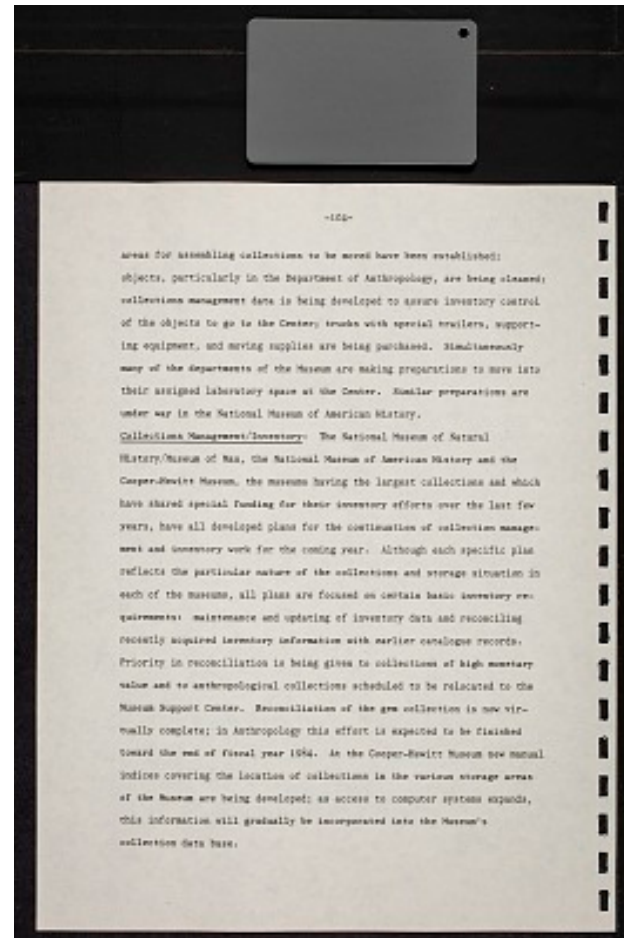
The Smithsonian Institution (the "Smithsonian") provides the content on this website (transcription.si.edu), other Smithsonian websites, and third-party sites on which it maintains a presence ("SI Websites") in support of its mission for the "increase and diffusion of knowledge." The Smithsonian invites visitors to use its online content for personal, educational and other non-commercial purposes. By using this website, you accept and agree to abide by the [following terms](#).

- If sharing the material in personal and educational contexts, please cite the Smithsonian Institution Archives as source of the content and the project title as provided at the top of the document. Include the accession number or collection name; when possible, link to the Smithsonian Institution Archives website.
- If you wish to use this material in a for-profit publication, exhibition, or online project, please contact Smithsonian Institution Archives or transcribe@si.edu

For more information on this project and related material, contact the Smithsonian Institution Archives. [See this project](#) and other collections in the Smithsonian Transcription Center.

areas for assembling collections to be moved have been established; objects, particularly in the Department of Anthropology, are being cleaned; collections management data is being developed to assure inventory control of the objects to go to the Center; trucks with special trailers, supporting equipment, and moving supplies are being purchased. Simultaneously many of the departments of the Museum are making preparations to move into their assigned laboratory space at the Center. Similar preparations are under way in the National Museum of American History.

Collections Management/Inventory: The National Museum of Natural History/Museum of Man, the National Museum of American History and the Cooper-Hewitt Museum, the museums having the largest collections and which have shared special funding for their inventory efforts over the last few years, have all developed plans for the continuation of collection management and inventory work for the coming year. Although each specific plan reflects the particular nature of the collections and storage situation in each of the museums, all plans are focused on certain basic inventory requirements: maintenance and updating of inventory data and reconciling recently acquired inventory information with earlier catalogue records. Priority in reconciliation is being given to collections of high monetary value and to anthropological collections scheduled to be relocated to the Museum Support Center. Reconciliation of the gem collection is now virtually complete; in Anthropology this effort is expected to be finished toward the end of fiscal year 1984. At the Cooper-Hewitt Museum new manual indices covering the location of collections in the various storage areas of the Museum are being developed; as access to computer systems expands, this information will gradually be incorporated into the Museum's collection data base.



Proceedings of the Board of Regents Meeting held on January 23, 1984
Transcribed and Reviewed by Digital Volunteers
Extracted Mar-29-2024 03:33:45



Smithsonian Institution

Smithsonian Institution Archives

The mission of the Smithsonian is the increase and diffusion of knowledge - shaping the future by preserving our heritage, discovering new knowledge, and sharing our resources with the world. Founded in 1846, the Smithsonian is the world's largest museum and research complex, consisting of 19 museums and galleries, the National Zoological Park, and nine research facilities. Become an active part of our mission through the Transcription Center. Together, we are discovering secrets hidden deep inside our collections that illuminate our history and our world.

Join us!

The Transcription Center: <https://transcription.si.edu>

On Facebook: <https://www.facebook.com/SmithsonianTranscriptionCenter>

On Twitter: [@TranscribeSI](https://twitter.com/TranscribeSI)

Connect with the Smithsonian

Smithsonian Institution: www.si.edu

On Facebook: <https://www.facebook.com/Smithsonian>

On Twitter: [@smithsonian](https://twitter.com/smithsonian)