



Smithsonian Institution

National Museum of African American History and Culture

Playbill for Blue

Extracted on Mar-28-2024 12:00:53

The Smithsonian Institution thanks all digital volunteers that transcribed and reviewed this material. Your work enriches Smithsonian collections, making them available to anyone with an interest in using them.

The Smithsonian Institution (the "Smithsonian") provides the content on this website (transcription.si.edu), other Smithsonian websites, and third-party sites on which it maintains a presence ("SI Websites") in support of its mission for the "increase and diffusion of knowledge." The Smithsonian invites visitors to use its online content for personal, educational and other non-commercial purposes. By using this website, you accept and agree to abide by the [following terms](#).

- If sharing the material in personal and educational contexts, please cite the National Museum of African American History and Culture as source of the content and the project title as provided at the top of the document. Include the accession number or collection name; when possible, link to the National Museum of African American History and Culture website.
- If you wish to use this material in a for-profit publication, exhibition, or online project, please contact National Museum of African American History and Culture or transcribe@si.edu

For more information on this project and related material, contact the National Museum of African American History and Culture. [See this project](#) and other collections in the Smithsonian Transcription Center.

[[whole page ad for perfume]]

The essence of a woman

[[image: colour photo of head & shoulders of model (Elizabeth Hurley) lying down, smiling at camera, bottle of perfume in front of her]]

The new fragrance from Estée Lauder

INTUITION

ESTÉE LAUDER

esteelauder.com

Available at Saks Fifth Avenue

(c) 2001 Estée Lauder Inc.

[[end page]]

[[start page]]

[[double line across page]]

GRAMERCY THEATRE

under the management of

CHASE MISHKIN, STEVEN M. LEVY, LEONARD SOLOWAY

[[line across]]

ROUNABOUT THEATRE COMPANY

TODD HAIMES, Artistic Director

ELLEN RICHARD, Managing Director

JULIA C. LEVY, Executive Director, External Affairs

Presents

THE LAURA PELS THEATRE SEASON

Phylicia Rashad Hill Harper

BLUE

by Charles Randolph-Wright

music by Nona Hendryx

lyrics by Nona Hendryx and Charles Randolph-Wright

Michael McElroy Howard W. Overshown Jewell Robinson

Randall Shepperd Messeret Stroman Chad Tucker

[[non acting line 1]]

Set Design James Leonard Joy

Costume Design Debra Bauer

Lighting Design Michael Gilliam

Sound Design Kurt Eric Fischer

[[non-acting, line 2]]

Production Stage Manager

Jay Adler

Casting by

Jeremy Rich and Pat McCorkle, C.S.A.

Founding Director Gene Feist

Associate Artistic Director Scott Ellis

[[non-acting, line 3]]

Director of Artistic Development Jim Carnahan

General Management Jason P. McLaughlin Catharine Guiher

Press Representative Boneau/Bryan-Brown

Director of Marketing David B. Steffen

Directed by

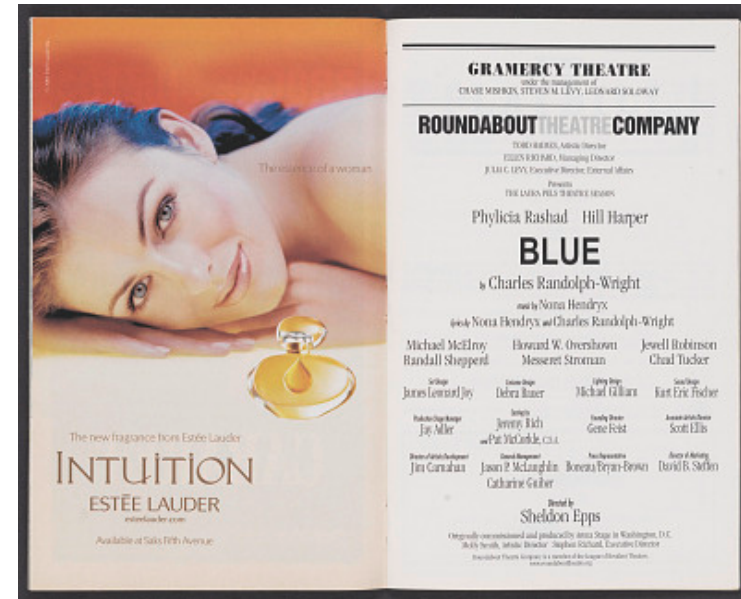
Sheldon Epps

Originally commissioned and produced by Arena Stage in Washington, D.C.

Molly Smith, Artistic Director Stephen Richard, Executive Director

Roundabout Theatre Company is a member of the League of Resident Theatres.

www.roundabouttheatre.org



Playbill for Blue
Transcribed and Reviewed by Digital Volunteers
Extracted Mar-28-2024 12:00:53



Smithsonian Institution

National Museum of African American History and Culture

The mission of the Smithsonian is the increase and diffusion of knowledge - shaping the future by preserving our heritage, discovering new knowledge, and sharing our resources with the world. Founded in 1846, the Smithsonian is the world's largest museum and research complex, consisting of 19 museums and galleries, the National Zoological Park, and nine research facilities. Become an active part of our mission through the Transcription Center. Together, we are discovering secrets hidden deep inside our collections that illuminate our history and our world.

Join us!

The Transcription Center: <https://transcription.si.edu>

On Facebook: <https://www.facebook.com/SmithsonianTranscriptionCenter>

On Twitter: [@TranscribeSI](https://twitter.com/TranscribeSI)

Connect with the Smithsonian

Smithsonian Institution: www.si.edu

On Facebook: <https://www.facebook.com/Smithsonian>

On Twitter: [@smithsonian](https://twitter.com/smithsonian)