



**Smithsonian Institution**

*Smithsonian Institution Archives*

## **Proceedings of the Board of Regents Meeting held on May 11, 1987**

Extracted on Mar-29-2024 08:13:18

**The Smithsonian Institution thanks all digital volunteers that transcribed and reviewed this material. Your work enriches Smithsonian collections, making them available to anyone with an interest in using them.**

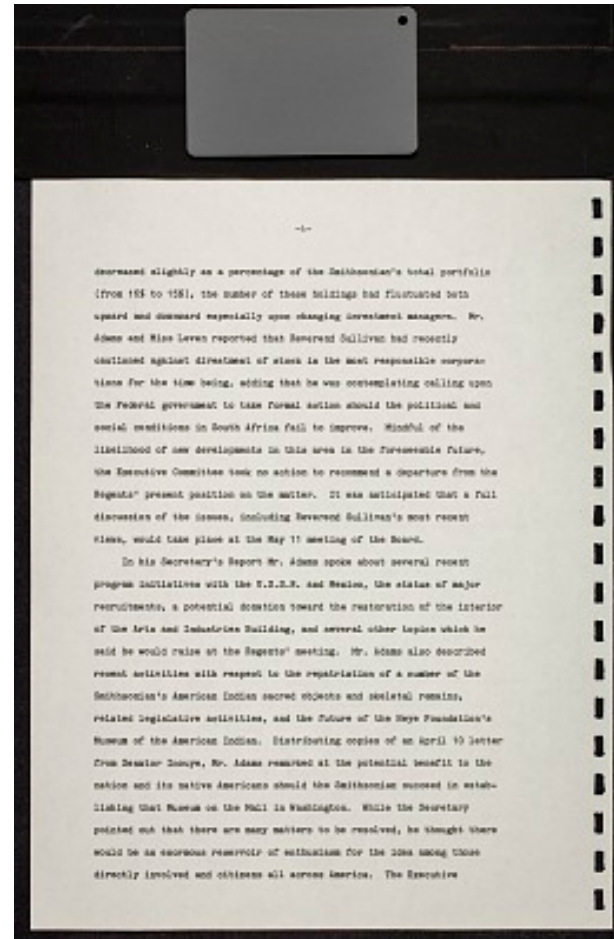
The Smithsonian Institution (the "Smithsonian") provides the content on this website ([transcription.si.edu](https://transcription.si.edu)), other Smithsonian websites, and third-party sites on which it maintains a presence ("SI Websites") in support of its mission for the "increase and diffusion of knowledge." The Smithsonian invites visitors to use its online content for personal, educational and other non-commercial purposes. By using this website, you accept and agree to abide by the [following terms](#).

- If sharing the material in personal and educational contexts, please cite the Smithsonian Institution Archives as source of the content and the project title as provided at the top of the document. Include the accession number or collection name; when possible, link to the Smithsonian Institution Archives website.
- If you wish to use this material in a for-profit publication, exhibition, or online project, please contact Smithsonian Institution Archives or [transcribe@si.edu](mailto:transcribe@si.edu)

For more information on this project and related material, contact the Smithsonian Institution Archives. [See this project](#) and other collections in the Smithsonian Transcription Center.

decreased slightly as a percentage of the Smithsonian's total portfolio (from 16% to 15%), the number of these holdings had fluctuated both upward and downward especially upon changing investment managers. Mr. Adams and Miss Leven reported that Reverend Sullivan had recently cautioned against divestment of stock in the most responsible corporations for the time being, adding that he was contemplating calling upon the Federal government to take formal action should the political and social conditions in South Africa fail to improve. Mindful of the likelihood of new developments in this area in the foreseeable future, the Executive Committee took no action to recommend a departure from the Regents' present position on the matter. It was anticipated that a full discussion of the issues, including Reverend Sullivan's most recent views, would take place at the May 11 meeting of the Board.

In his Secretary's Report Mr. Adams spoke about several recent program initiatives with the U.S.S.R. and Mexico, the status of major recruitments, a potential donation toward the restoration of the interior of the Arts and Industries Building, and several other topics which he said he would raise at the Regents' meeting. Mr. Adams also described recent activities with respect to the repatriation of a number of the Smithsonian's American Indian sacred objects and skeletal remains, related legislative activities, and the future of the Heye Foundation's Museum of the American Indian. Distributing copies of an April 10 letter from Senator Inouye, Mr. Adams remarked at the potential benefit to the nation and its native Americans should the Smithsonian succeed in establishing that Museum on the Mall in Washington. While the Secretary pointed out that there are many matters to be resolved, he thought there would be an enormous reservoir of enthusiasm for the idea among those directly involved and citizens all across America. The Executive



Proceedings of the Board of Regents Meeting held on May 11, 1987  
Transcribed and Reviewed by Digital Volunteers  
Extracted Mar-29-2024 08:13:18



## Smithsonian Institution

*Smithsonian Institution Archives*

The mission of the Smithsonian is the increase and diffusion of knowledge - shaping the future by preserving our heritage, discovering new knowledge, and sharing our resources with the world. Founded in 1846, the Smithsonian is the world's largest museum and research complex, consisting of 19 museums and galleries, the National Zoological Park, and nine research facilities. Become an active part of our mission through the Transcription Center. Together, we are discovering secrets hidden deep inside our collections that illuminate our history and our world.

Join us!

The Transcription Center: <https://transcription.si.edu>

On Facebook: <https://www.facebook.com/SmithsonianTranscriptionCenter>

On Twitter: [@TranscribeSI](https://twitter.com/TranscribeSI)

Connect with the Smithsonian

Smithsonian Institution: [www.si.edu](http://www.si.edu)

On Facebook: <https://www.facebook.com/Smithsonian>

On Twitter: [@smithsonian](https://twitter.com/smithsonian)