



Smithsonian Institution

Archives of American Gardens

The Garden Club of America Collection - Alice Lockwood's Lecture American Gardens of the Northern States

Extracted on Apr-18-2024 04:21:16

The Smithsonian Institution thanks all digital volunteers that transcribed and reviewed this material. Your work enriches Smithsonian collections, making them available to anyone with an interest in using them.

The Smithsonian Institution (the "Smithsonian") provides the content on this website (transcription.si.edu), other Smithsonian websites, and third-party sites on which it maintains a presence ("SI Websites") in support of its mission for the "increase and diffusion of knowledge." The Smithsonian invites visitors to use its online content for personal, educational and other non-commercial purposes. By using this website, you accept and agree to abide by the [following terms](#).

- If sharing the material in personal and educational contexts, please cite the Archives of American Gardens as source of the content and the project title as provided at the top of the document. Include the accession number or collection name; when possible, link to the Archives of American Gardens website.
- If you wish to use this material in a for-profit publication, exhibition, or online project, please contact Archives of American Gardens or transcribe@si.edu

For more information on this project and related material, contact the Archives of American Gardens. [See this project](#) and other collections in the Smithsonian Transcription Center.

page 5.

hawthorne and magnolias, against the old brick peach well. These beds were formerly bordered by box, but the Massachusetts climate was too severe and this edging succumbed to the cold some years ago.

7. Under a great native pine, which saw the building of "The Vale", stands a lovely old garden house with a door opening through the brick peach well onto the back gardens and the high land with its paths through the woods. Beds massed with perennials surround it, and it fits as peacefully into the picture as the old pine.

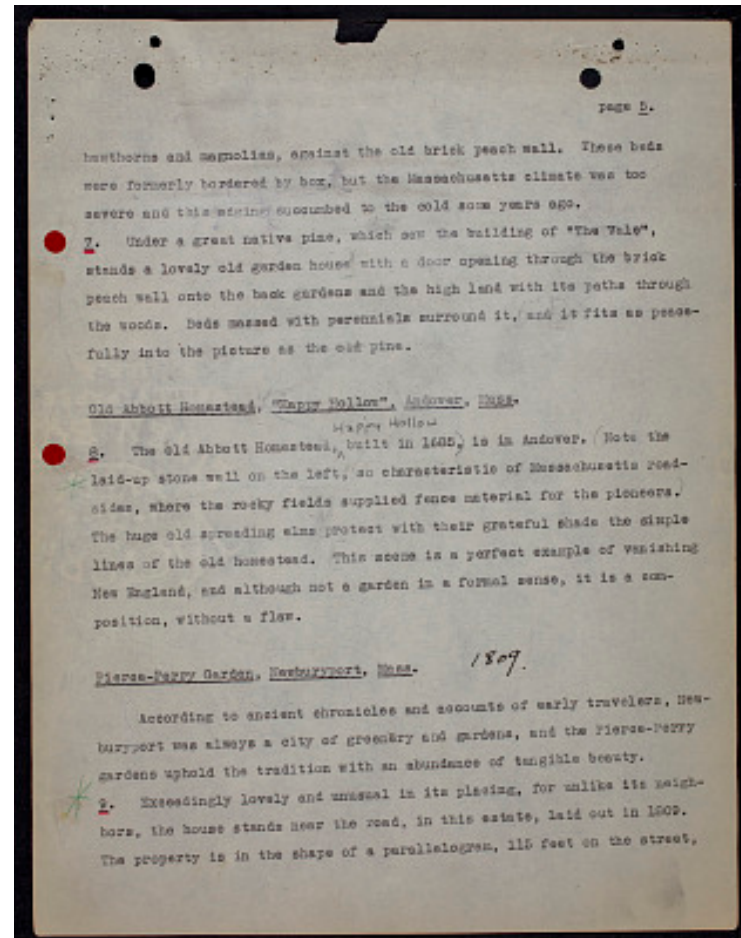
Old Abbott Homestead, "Happy Hollow", Andover, Mass.

* 8. The old Abbott Homestead, [^]Happy Hollow built in 1685, is in Andover. Note the laid-up stone wall on the left, so characteristic of Massachusetts roadsides, where the rocky fields supplied fence material for the pioneers. The huge old spreading elms protect with their grateful shade the simple lines of the old homestead. This scene is a perfect example of vanishing New England, and although not a garden in a formal sense, it is a composition, without a flaw.

Pierce-Perry Garden, Newburyport, Mass.
[^]1809

According to ancient chronicles and accounts of early travelers, Newburyport was always a city of greenery and gardens, and the Pierce-Perry gardens uphold the tradition with an abundance of tangible beauty.

* 9. Exceedingly lovely and unusual in its placing, for unlike its neighbors, the house stands near the road, in this estate, laid out in 1609. The property is in the shape of a parallelogram, 115 feet on the street,



The Garden Club of America Collection - Alice Lockwood's Lecture American Gardens of the Northern States
Transcribed and Reviewed by Digital Volunteers
Approved by Smithsonian Staff
Extracted Apr-18-2024 04:21:16



Smithsonian Institution

Archives of American Gardens

The mission of the Smithsonian is the increase and diffusion of knowledge - shaping the future by preserving our heritage, discovering new knowledge, and sharing our resources with the world. Founded in 1846, the Smithsonian is the world's largest museum and research complex, consisting of 19 museums and galleries, the National Zoological Park, and nine research facilities. Become an active part of our mission through the Transcription Center. Together, we are discovering secrets hidden deep inside our collections that illuminate our history and our world.

Join us!

The Transcription Center: <https://transcription.si.edu>

On Facebook: <https://www.facebook.com/SmithsonianTranscriptionCenter>

On Twitter: [@TranscribeSI](https://twitter.com/TranscribeSI)

Connect with the Smithsonian

Smithsonian Institution: www.si.edu

On Facebook: <https://www.facebook.com/Smithsonian>

On Twitter: [@smithsonian](https://twitter.com/smithsonian)