



**Smithsonian Institution**

*Smithsonian Institution Archives*

## **Proceedings of the Board of Regents Meeting held on January 29, 1990**

Extracted on Apr-17-2024 06:14:50

**The Smithsonian Institution thanks all digital volunteers that transcribed and reviewed this material. Your work enriches Smithsonian collections, making them available to anyone with an interest in using them.**

The Smithsonian Institution (the "Smithsonian") provides the content on this website ([transcription.si.edu](https://transcription.si.edu)), other Smithsonian websites, and third-party sites on which it maintains a presence ("SI Websites") in support of its mission for the "increase and diffusion of knowledge." The Smithsonian invites visitors to use its online content for personal, educational and other non-commercial purposes. By using this website, you accept and agree to abide by the [following terms](#).

- If sharing the material in personal and educational contexts, please cite the Smithsonian Institution Archives as source of the content and the project title as provided at the top of the document. Include the accession number or collection name; when possible, link to the Smithsonian Institution Archives website.
- If you wish to use this material in a for-profit publication, exhibition, or online project, please contact Smithsonian Institution Archives or [transcribe@si.edu](mailto:transcribe@si.edu)

For more information on this project and related material, contact the Smithsonian Institution Archives. [See this project](#) and other collections in the Smithsonian Transcription Center.

The Regents recognized that there remain two essential aspects of the Dulles proposal that require further work: a commitment on the ratio of state funds matched to Federal appropriations and a firmer sense of commitment from Virginia officials on the building of rail service to Dulles. The Regents were also mindful that the decision to locate the Extension at either airport cannot be considered final until authorizing legislation is approved by the Congress.

It was understood that with the Regents' consensus on a preferred site for the Extension, Smithsonian staff and contractors can continue planning to the point where the legislation can be introduced to authorize the project. Prior to the May 7, 1990 meeting of the Regents, the Secretary and his staff will undertake further planning for the site, further analysis and negotiation of potential financial arrangements with state officials and cognizant committees in the Congress for detailed planning and construction, and drafting a program of requirements for the facility.

Finally, the following motion was proposed and approved:

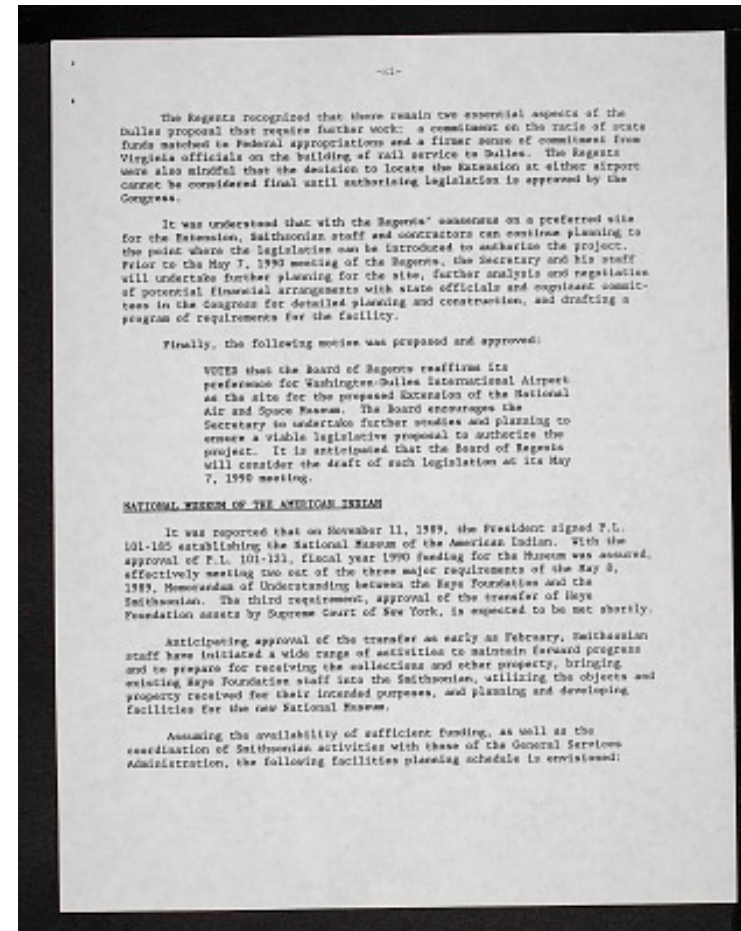
VOTED that the Board of Regents reaffirms its preference for Washington-Dulles International Airport as the site for the proposed Extension of the National Air and Space Museum. The Board encourages the Secretary to undertake further studies and planning to ensure a viable legislative proposal to authorize the project. It is anticipated that the Board of Regents will consider the draft of such legislation at its May 7, 1990 meeting.

NATIONAL MUSEUM OF THE AMERICAN INDIAN

It was reported that on November 11, 1989, the President signed P.L. 101-185 establishing the National Museum of the American Indian. With the approval of P.L. 101-121, fiscal year 1990 funding for the Museum was assured, effectively meeting two out of the three major requirements of the May 8, 1989, Memorandum of Understanding between the Heye Foundation and the Smithsonian. The third requirement, approval of the transfer of Heye Foundation assets by Supreme Court of New York, is expected to be met shortly.

Anticipating approval of the transfer as early as February, Smithsonian staff have initiated a wide range of activities to maintain forward progress and to prepare for receiving the collections and other property, bringing existing Heye Foundation staff into the Smithsonian, utilizing the objects and property received for their intended purposes, and planning and developing facilities for the new National Museum.

Assuming the availability of sufficient funding, as well as the coordination of Smithsonian activities with those of the General Services Administration, the following facilities planning schedule is envisioned:



Proceedings of the Board of Regents Meeting held on January 29, 1990  
Transcribed and Reviewed by Digital Volunteers  
Extracted Apr-17-2024 06:14:50



## Smithsonian Institution

*Smithsonian Institution Archives*

The mission of the Smithsonian is the increase and diffusion of knowledge - shaping the future by preserving our heritage, discovering new knowledge, and sharing our resources with the world. Founded in 1846, the Smithsonian is the world's largest museum and research complex, consisting of 19 museums and galleries, the National Zoological Park, and nine research facilities. Become an active part of our mission through the Transcription Center. Together, we are discovering secrets hidden deep inside our collections that illuminate our history and our world.

Join us!

The Transcription Center: <https://transcription.si.edu>

On Facebook: <https://www.facebook.com/SmithsonianTranscriptionCenter>

On Twitter: [@TranscribeSI](https://twitter.com/TranscribeSI)

Connect with the Smithsonian

Smithsonian Institution: [www.si.edu](http://www.si.edu)

On Facebook: <https://www.facebook.com/Smithsonian>

On Twitter: [@smithsonian](https://twitter.com/smithsonian)