



**Smithsonian Institution**

*Smithsonian Institution Archives*

## **Proceedings of the Board of Regents Meeting held on May 7, 1990**

Extracted on Apr-16-2024 07:05:48

**The Smithsonian Institution thanks all digital volunteers that transcribed and reviewed this material. Your work enriches Smithsonian collections, making them available to anyone with an interest in using them.**

The Smithsonian Institution (the "Smithsonian") provides the content on this website ([transcription.si.edu](https://transcription.si.edu)), other Smithsonian websites, and third-party sites on which it maintains a presence ("SI Websites") in support of its mission for the "increase and diffusion of knowledge." The Smithsonian invites visitors to use its online content for personal, educational and other non-commercial purposes. By using this website, you accept and agree to abide by the [following terms](#).

- If sharing the material in personal and educational contexts, please cite the Smithsonian Institution Archives as source of the content and the project title as provided at the top of the document. Include the accession number or collection name; when possible, link to the Smithsonian Institution Archives website.
- If you wish to use this material in a for-profit publication, exhibition, or online project, please contact Smithsonian Institution Archives or [transcribe@si.edu](mailto:transcribe@si.edu)

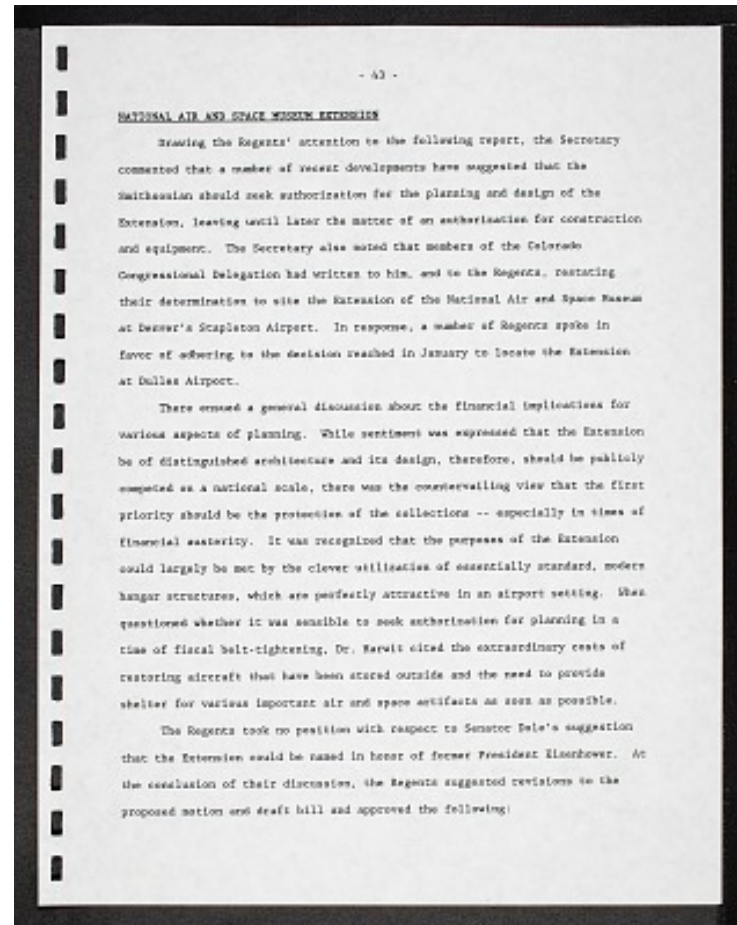
For more information on this project and related material, contact the Smithsonian Institution Archives. [See this project](#) and other collections in the Smithsonian Transcription Center.

NATIONAL AIR AND SPACE MUSEUM EXTENSION

Drawing the Regents' attention to the following report, the Secretary commented that a number of recent developments have suggested that the Smithsonian should seek authorization for the planning and design of the Extension, leaving until later the matter of an authorization for construction and equipment. The Secretary also noted that members of the Colorado Congressional Delegation had written to him, and to the Regents, restating their determination to site the Extension of the National Air and Space Museum at Denver's Stapleton Airport. In response, a number of Regents spoke in favor of adhering to the decision reached in January to locate the Extension at Dulles Airport.

There ensued a general discussion about the financial implications for various aspects of planning. While sentiment was expressed that the Extension be of distinguished architecture and its design, therefore, should be publicly competed on a national scale, there was the countervailing view that the first priority should be the protection of the collections -- especially in times of financial austerity. It was recognized that the purposes of the Extension could largely be met by the clever utilization of essentially standard, modern hangar structures, which are perfectly attractive in an airport setting. When questioned whether it was sensible to seek authorization for planning in a time of fiscal belt-tightening, Dr. Harwit cited the extraordinary costs of restoring aircraft that have been stored outside and the need to provide shelter for various important air and space artifacts as soon as possible.

The Regents took no position with respect to Senator Dole's suggestion that the Extension could be named in honor of former President Eisenhower. At the conclusion of their discussion, the Regents suggested revisions to the proposed motion and draft bill and approved the following:



Proceedings of the Board of Regents Meeting held on May 7, 1990  
Transcribed and Reviewed by Digital Volunteers  
Extracted Apr-16-2024 07:05:48



## Smithsonian Institution

*Smithsonian Institution Archives*

The mission of the Smithsonian is the increase and diffusion of knowledge - shaping the future by preserving our heritage, discovering new knowledge, and sharing our resources with the world. Founded in 1846, the Smithsonian is the world's largest museum and research complex, consisting of 19 museums and galleries, the National Zoological Park, and nine research facilities. Become an active part of our mission through the Transcription Center. Together, we are discovering secrets hidden deep inside our collections that illuminate our history and our world.

Join us!

The Transcription Center: <https://transcription.si.edu>

On Facebook: <https://www.facebook.com/SmithsonianTranscriptionCenter>

On Twitter: [@TranscribeSI](https://twitter.com/TranscribeSI)

Connect with the Smithsonian

Smithsonian Institution: [www.si.edu](http://www.si.edu)

On Facebook: <https://www.facebook.com/Smithsonian>

On Twitter: [@smithsonian](https://twitter.com/smithsonian)