



Smithsonian Institution

Archives of American Gardens

The Garden Club of America Collection - Alice Lockwood's Lecture American Gardens of the Southern States

Extracted on Mar-25-2023 07:15:40

The Smithsonian Institution thanks all digital volunteers that transcribed and reviewed this material. Your work enriches Smithsonian collections, making them available to anyone with an interest in using them.

The Smithsonian Institution (the "Smithsonian") provides the content on this website (transcription.si.edu), other Smithsonian websites, and third-party sites on which it maintains a presence ("SI Websites") in support of its mission for the "increase and diffusion of knowledge." The Smithsonian invites visitors to use its online content for personal, educational and other non-commercial purposes. By using this website, you accept and agree to abide by the [following terms](#).

- If sharing the material in personal and educational contexts, please cite the Archives of American Gardens as source of the content and the project title as provided at the top of the document. Include the accession number or collection name; when possible, link to the Archives of American Gardens website.
- If you wish to use this material in a for-profit publication, exhibition, or online project, please contact Archives of American Gardens or transcribe@si.edu

For more information on this project and related material, contact the Archives of American Gardens. [See this project](#) and other collections in the Smithsonian Transcription Center.

VIRGINIA

The Wall of the University of Virginia

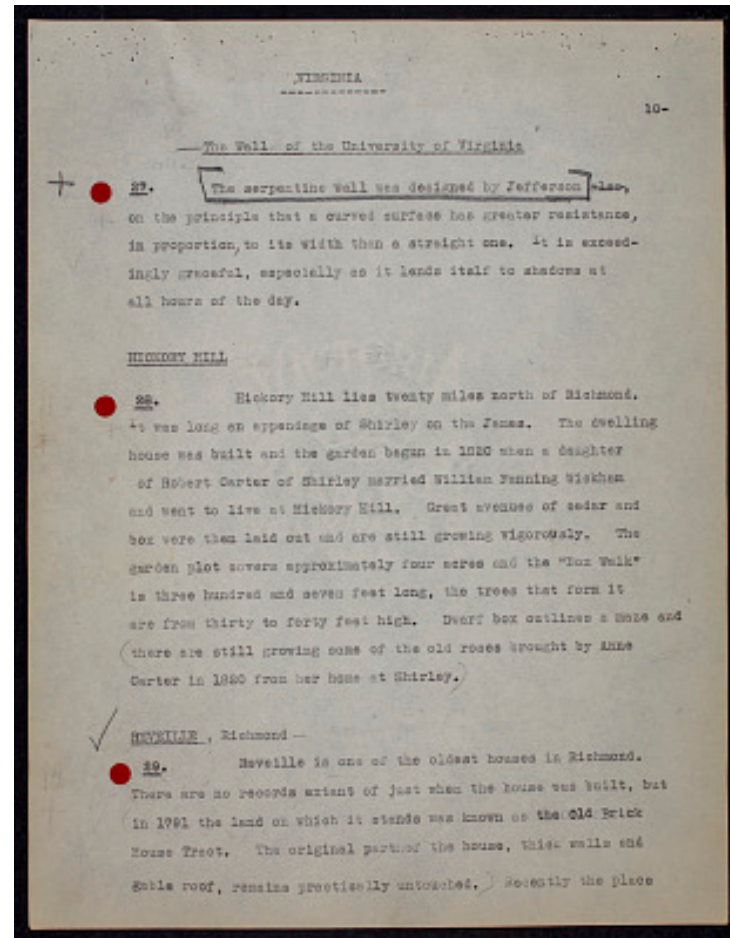
27. The serpentine wall was designed by Jefferson, on the principle that a curved surface has greater resistance, in proportion to its width than a straight one. It is exceedingly graceful, especially as it lends itself to shadows at all hours of the day.

HICKORY HILL

28. Hickory Hill lies twenty miles north of Richmond. It was long an appendage of Shirley on the James. The dwelling house was built and the garden begun in 1820 when a daughter of Robert Carter of Shirley married William Fanning Wickham and went to live at Hickory Hill. Great avenues of cedar and box were then laid out and are still growing vigorously. The garden plot covers approximately four acres and the "Box Walk" is three hundred and seven feet long, the trees that form it are from thirty to forty feet high. Dwarf box outlines a maze and there are still growing some of the old roses brought by Anne Carter in 1820 from her home at Shirley.

REVEILLE, Richmond

29. Reveille is one of the oldest houses in Richmond. There are no records extant of just when the house was built, but in 1791 the land on which it stands was known as the Old Brick House Tract. The original part of the house, thick walls and gable roof, remains practically untouched. Recently the place



The Garden Club of America Collection - Alice Lockwood's Lecture American Gardens of the Southern States
 Transcribed and Reviewed by Digital Volunteers
 Approved by Smithsonian Staff
 Extracted Mar-25-2023 07:15:40



Smithsonian Institution

Archives of American Gardens

The mission of the Smithsonian is the increase and diffusion of knowledge - shaping the future by preserving our heritage, discovering new knowledge, and sharing our resources with the world. Founded in 1846, the Smithsonian is the world's largest museum and research complex, consisting of 19 museums and galleries, the National Zoological Park, and nine research facilities. Become an active part of our mission through the Transcription Center. Together, we are discovering secrets hidden deep inside our collections that illuminate our history and our world.

Join us!

The Transcription Center: <https://transcription.si.edu>

On Facebook: <https://www.facebook.com/SmithsonianTranscriptionCenter>

On Twitter: [@TranscribeSI](https://twitter.com/TranscribeSI)

Connect with the Smithsonian

Smithsonian Institution: www.si.edu

On Facebook: <https://www.facebook.com/Smithsonian>

On Twitter: [@smithsonian](https://twitter.com/smithsonian)