



**Smithsonian Institution**

*Archives of American Gardens*

## **The Garden Club of America Collection - Alice Lockwood's Lecture American Gardens of the Southern States**

Extracted on Mar-29-2023 09:55:11

**The Smithsonian Institution thanks all digital volunteers that transcribed and reviewed this material. Your work enriches Smithsonian collections, making them available to anyone with an interest in using them.**

The Smithsonian Institution (the "Smithsonian") provides the content on this website ([transcription.si.edu](https://transcription.si.edu)), other Smithsonian websites, and third-party sites on which it maintains a presence ("SI Websites") in support of its mission for the "increase and diffusion of knowledge." The Smithsonian invites visitors to use its online content for personal, educational and other non-commercial purposes. By using this website, you accept and agree to abide by the [following terms](#).

- If sharing the material in personal and educational contexts, please cite the Archives of American Gardens as source of the content and the project title as provided at the top of the document. Include the accession number or collection name; when possible, link to the Archives of American Gardens website.
- If you wish to use this material in a for-profit publication, exhibition, or online project, please contact Archives of American Gardens or [transcribe@si.edu](mailto:transcribe@si.edu)

For more information on this project and related material, contact the Archives of American Gardens. [See this project](#) and other collections in the Smithsonian Transcription Center.

12-

^[[right arrow]] MARYLAND

[[underlined]] DOUGHOREGAN [[/underlined]] MANOR, Howard County

^[[OKAY]] [[red dot]]

[[underlined]] 30 [[/underlined]]. One of the greatest estates in Maryland was ^[[([)]granted to the Carroll family^([)] and Doughoregan Manor was ^[[([)]built by Charles Carroll in 1717.^([)]

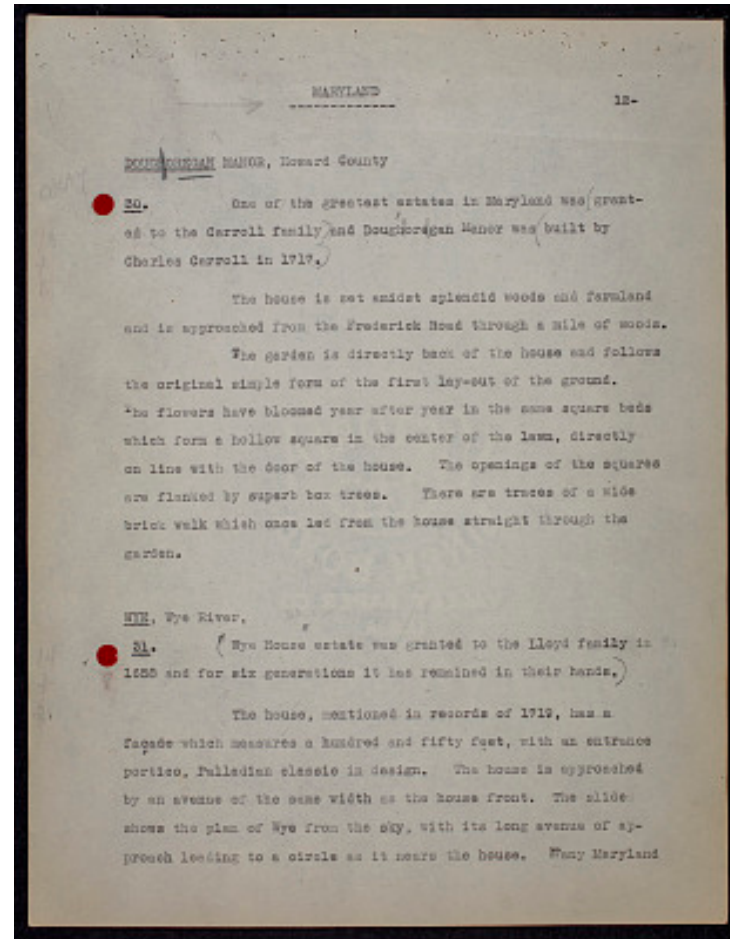
The house is set amidst splendid woods and farmland and is approached from the Frederick Road through a mile of woods.

The garden is directly back of the house and follows the original simple form of the first lay-out of the ground. The flowers have bloomed year after year in the same square beds which form a hollow square in the center of the lawn, directly on line with the door of the house. The openings of the squares are flanked by superb box trees. There are traces of a wide brick walk which once led from the house straight through the garden.

[[underlined]] WYE [[/underlined]], Wye River, [[checkmark]] [[red dot]]

[[underlined]] 31 [[/underlined]]. ^[[(")] Wye House^([")] estate was granted to the Lloyd family in 1658 and for six generations it has remained in their hands.^([)]

The house, mentioned in records of 1719, has a facade which measures a hundred and fifty feet, with an entrance portico, Palladian classic in design. The house is approached by an avenue of the same width as the house front. The slide shows the plan of Wye from the sky, with its long avenue of approach leading to a circle as it nears the house. Many Maryland



The Garden Club of America Collection - Alice Lockwood's Lecture American Gardens of the Southern States  
Transcribed and Reviewed by Digital Volunteers  
Approved by Smithsonian Staff  
Extracted Mar-29-2023 09:55:11



## Smithsonian Institution

*Archives of American Gardens*

The mission of the Smithsonian is the increase and diffusion of knowledge - shaping the future by preserving our heritage, discovering new knowledge, and sharing our resources with the world. Founded in 1846, the Smithsonian is the world's largest museum and research complex, consisting of 19 museums and galleries, the National Zoological Park, and nine research facilities. Become an active part of our mission through the Transcription Center. Together, we are discovering secrets hidden deep inside our collections that illuminate our history and our world.

Join us!

The Transcription Center: <https://transcription.si.edu>

On Facebook: <https://www.facebook.com/SmithsonianTranscriptionCenter>

On Twitter: [@TranscribeSI](https://twitter.com/TranscribeSI)

Connect with the Smithsonian

Smithsonian Institution: [www.si.edu](http://www.si.edu)

On Facebook: <https://www.facebook.com/Smithsonian>

On Twitter: [@smithsonian](https://twitter.com/smithsonian)