



**Smithsonian Institution**

*Smithsonian Institution Archives*

## **Ursula B. Marvin - Journal from Antarctica, 1978-1979**

Extracted on Apr-19-2024 04:49:20

**The Smithsonian Institution thanks all digital volunteers that transcribed and reviewed this material. Your work enriches Smithsonian collections, making them available to anyone with an interest in using them.**

The Smithsonian Institution (the "Smithsonian") provides the content on this website ([transcription.si.edu](https://transcription.si.edu)), other Smithsonian websites, and third-party sites on which it maintains a presence ("SI Websites") in support of its mission for the "increase and diffusion of knowledge." The Smithsonian invites visitors to use its online content for personal, educational and other non-commercial purposes. By using this website, you accept and agree to abide by the [following terms](#).

- If sharing the material in personal and educational contexts, please cite the Smithsonian Institution Archives as source of the content and the project title as provided at the top of the document. Include the accession number or collection name; when possible, link to the Smithsonian Institution Archives website.
- If you wish to use this material in a for-profit publication, exhibition, or online project, please contact Smithsonian Institution Archives or [transcribe@si.edu](mailto:transcribe@si.edu)

For more information on this project and related material, contact the Smithsonian Institution Archives. [See this project](#) and other collections in the Smithsonian Transcription Center.

[[preprinted]] 5 [[/preprinted]]

A few sprinkles off and on - Typical maritime weather. Back to Motel & then we 5 & 1 other (Navy man ) to dinner at a Fish House known to Pat. Tables fixed w swinging (swiveling) seats We brought white N.Z. wine & much enjoyed my grilled flounder. On Sat. PM & evening - CrCh is empty & silent. Very sedate English town of long gone era at home: clean, neat, commemorative, proper, safe. ...except for Maoris on streets at night in some sections - said to be wild and dangerous. We saw one in a combative mood on our way home.

Dec. 10 Continental Breakfast in room : Refrig. w. juice, milk, cereal, Bread. Coffee maker & toaster. How civilized!

By 9:30 due at CDC (Clothing Dist. Ctr) in Navy base at airport. Hiked to town for bus. Each of us issued 2 orange canvas bags full of pre-selected & color-coord. clothing. (List in back) I considered taking the issue parka as well as mine, but did not in the end. A long hassle of trying on (women in storage room) - exchanging it decisions-decisions about what to take & what to store. Naturally I was one of last ones out. We went to town for lunch -- take-out hamburgers consumed in Park.

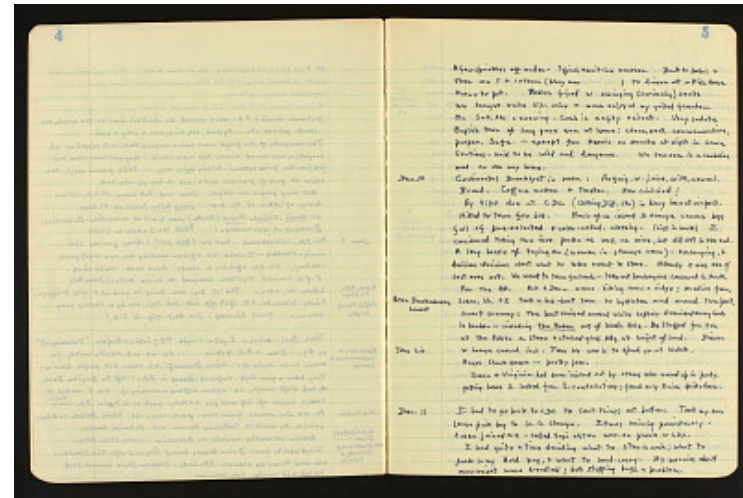
For the P.M. Pat & Dean were hiking over a ridge; on advice from Susan, Va, & I took a bus-boat tour to Lyttleton and around the point. Great scenery: the boat cruised around while captain described every boat in harbor -- including The Knorr out of Woods Hole. Bus stopped for tea at the Paketie a stone & stained-glass bldg. at height of land. Dinner w large crowd incl. John Lio who is to spend yr at Vostok. Angus Steak House -- pretty poor.

^^[[John Lio]]

Susan & Virginia had been invited out by others who wound up in party. getting home I looked for S. constellations: found only Orion upside down.

Dec. 11 I had to back to CDC to sort things out better: Took my own large pink bag to lv. in storage. It was raining persistently. Susan joined me - called taxi after arr. on phone w C.D.C.

I had quite a time deciding what to stow in crch; what to pack in my Hold bag, & what to hand-carry. My worries about overweight were needless; but stuffing bags a problem.



Ursula B. Marvin - Journal from Antarctica, 1978-1979  
Transcribed and Reviewed by Digital Volunteers  
Extracted Apr-19-2024 04:49:20



## Smithsonian Institution

*Smithsonian Institution Archives*

The mission of the Smithsonian is the increase and diffusion of knowledge - shaping the future by preserving our heritage, discovering new knowledge, and sharing our resources with the world. Founded in 1846, the Smithsonian is the world's largest museum and research complex, consisting of 19 museums and galleries, the National Zoological Park, and nine research facilities. Become an active part of our mission through the Transcription Center. Together, we are discovering secrets hidden deep inside our collections that illuminate our history and our world.

Join us!

The Transcription Center: <https://transcription.si.edu>

On Facebook: <https://www.facebook.com/SmithsonianTranscriptionCenter>

On Twitter: [@TranscribeSI](https://twitter.com/TranscribeSI)

Connect with the Smithsonian

Smithsonian Institution: [www.si.edu](http://www.si.edu)

On Facebook: <https://www.facebook.com/Smithsonian>

On Twitter: [@smithsonian](https://twitter.com/smithsonian)