



**Smithsonian Institution**

*Smithsonian National Air and Space Museum Archives*

## **Blanche Stuart Scott Collection - Scripts and Manuscripts**

Extracted on Apr-16-2024 09:42:06

**The Smithsonian Institution thanks all digital volunteers that transcribed and reviewed this material. Your work enriches Smithsonian collections, making them available to anyone with an interest in using them.**

The Smithsonian Institution (the "Smithsonian") provides the content on this website ([transcription.si.edu](https://transcription.si.edu)), other Smithsonian websites, and third-party sites on which it maintains a presence ("SI Websites") in support of its mission for the "increase and diffusion of knowledge." The Smithsonian invites visitors to use its online content for personal, educational and other non-commercial purposes. By using this website, you accept and agree to abide by the [following terms](#).

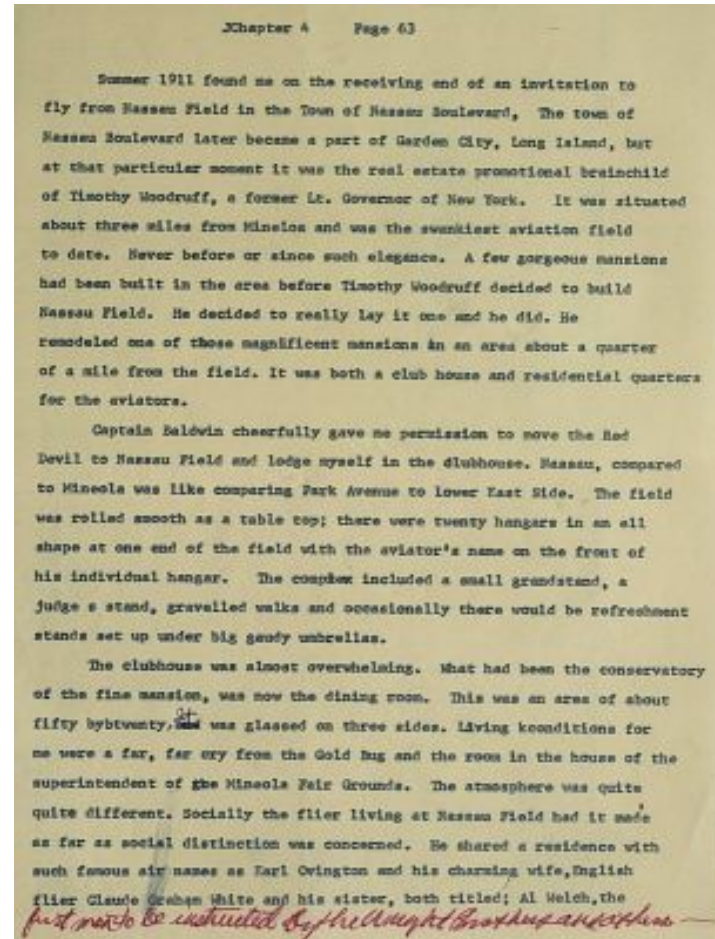
- If sharing the material in personal and educational contexts, please cite the Smithsonian National Air and Space Museum Archives as source of the content and the project title as provided at the top of the document. Include the accession number or collection name; when possible, link to the Smithsonian National Air and Space Museum Archives website.
- If you wish to use this material in a for-profit publication, exhibition, or online project, please contact Smithsonian National Air and Space Museum Archives or [transcribe@si.edu](mailto:transcribe@si.edu)

For more information on this project and related material, contact the Smithsonian National Air and Space Museum Archives. [See this project](#) and other collections in the Smithsonian Transcription Center.

Summer 1911 found me on the receiving end of an invitation to fly from Nassau Field in the Town of Nassau Boulevard. The town of Nassau Boulevard later became a part of Garden City, Long Island, but at that particular moment it was the real estate promotional brainchild of Timothy Woodruff, a former Lt. Governor of New York. It was situated about three miles from Mineola and was the swankiest aviation field to date. Never before or since such elegance. A few gorgeous mansions had been built in the area before Timothy Woodruff decided to build Nassau Field. He decided to really lay it one and he did. He remodeled one of those magnificent mansions in an area about a quarter of a mile from the field. It was both a club house and residential quarters for the aviators.

Captain Baldwin cheerfully gave me permission to move the Red Devil to Nassau Field and lodge myself in the clubhouse. Nassau, compared to Mineola was like comparing Park Avenue to lower East Side. The field was rolled smooth as a table top; there were twenty hangars in an ell shape at one end of the field with the aviator's name on the front of his individual hangar. The complex included a small grandstand, a judges stand, a gravelled walks and occasionally there would be refreshment stands set up under big gaudy umbrellas.

The clubhouse was almost overwhelming. What had been the conservatory of the fine mansion, was now the dining room. This was an area of about fifty by twenty. ~~It was~~ <sup>It</sup> was glassed on three sides. Living conditions for me were a far, far cry from the Gold Bug and the room in the house of the superintendent of the Mineola Fair Grounds. The atmosphere was quite, quite different. Socially the flier living at Nassau Field had it made as far as social distinction was concerned. He shared a residence with such famous sir names as Earl Ovington and his charming wife, English flier Claude Graham White and his sister, both titled; Al Welch, the first man to be instructed by the Wright Brothers and others—



Blanche Stuart Scott Collection - Scripts and Manuscripts  
Transcribed and Reviewed by Digital Volunteers  
Extracted Apr-16-2024 09:42:06



## Smithsonian Institution

*Smithsonian National Air and Space Museum Archives*

The mission of the Smithsonian is the increase and diffusion of knowledge - shaping the future by preserving our heritage, discovering new knowledge, and sharing our resources with the world. Founded in 1846, the Smithsonian is the world's largest museum and research complex, consisting of 19 museums and galleries, the National Zoological Park, and nine research facilities. Become an active part of our mission through the Transcription Center. Together, we are discovering secrets hidden deep inside our collections that illuminate our history and our world.

Join us!

The Transcription Center: <https://transcription.si.edu>

On Facebook: <https://www.facebook.com/SmithsonianTranscriptionCenter>

On Twitter: [@TranscribeSI](https://twitter.com/TranscribeSI)

Connect with the Smithsonian

Smithsonian Institution: [www.si.edu](http://www.si.edu)

On Facebook: <https://www.facebook.com/Smithsonian>

On Twitter: [@smithsonian](https://twitter.com/smithsonian)