



Smithsonian Institution

Archives of American Art

Anna Walinska's Travel Diary, 1954 November-1955 March

Extracted on Apr-16-2024 02:16:01

The Smithsonian Institution thanks all digital volunteers that transcribed and reviewed this material. Your work enriches Smithsonian collections, making them available to anyone with an interest in using them.

The Smithsonian Institution (the "Smithsonian") provides the content on this website (transcription.si.edu), other Smithsonian websites, and third-party sites on which it maintains a presence ("SI Websites") in support of its mission for the "increase and diffusion of knowledge." The Smithsonian invites visitors to use its online content for personal, educational and other non-commercial purposes. By using this website, you accept and agree to abide by the [following terms](#).

- If sharing the material in personal and educational contexts, please cite the Archives of American Art as source of the content and the project title as provided at the top of the document. Include the accession number or collection name; when possible, link to the Archives of American Art website.
- If you wish to use this material in a for-profit publication, exhibition, or online project, please contact Archives of American Art or transcribe@si.edu

For more information on this project and related material, contact the Archives of American Art. [See this project](#) and other collections in the Smithsonian Transcription Center.

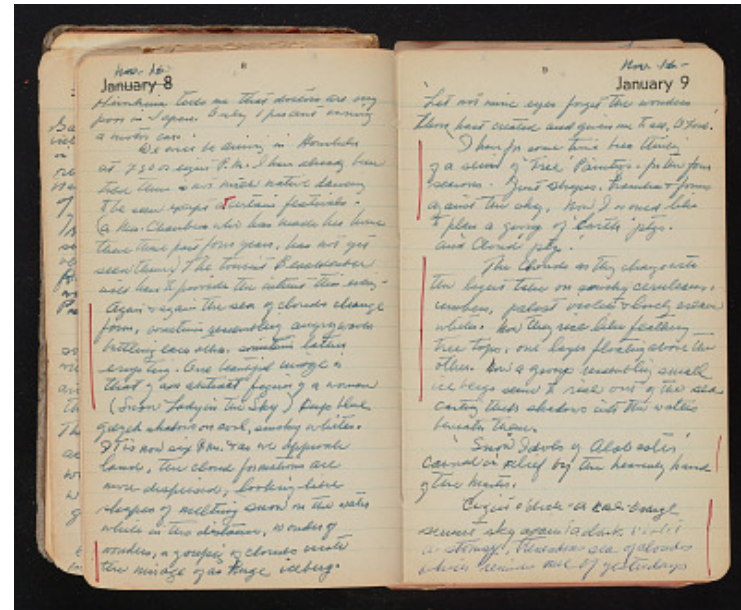
8

Nov. 16
~~[[strikethrough]] January 8 [[/strikethrough]]~~

Hirashima tells me that doctors are very poor in Japan. Only 1 percent owning a motor car.

We will be arriving in Honolulu at 7:30 or eight P.M. I have already been told there is not much native dancing to be seen except at certain festivals - (a Mrs. Chambers who has made her home there these past four years, has not yet seen them.) The tourist Beachcomber will have to provide the interest this evening -

Again & again the sea of clouds change form, sometimes resembling angry waves battling each other, sometimes lather erupting. One beautiful image is that of an abstract figure of a woman (Snow Lady in the Sky) Deep blue greyed shadows on cool, smoky whites. It is now six P.M. & as we approach land, the cloud formations are more dispersed, looking like shapes of melting snow on the water while in the distance, wonder of wonders, a grouping of clouds create the mirage of a huge iceberg.



9

Nov. 16 -
 January 9

'Let not mine eyes forget the wonders thou hast created and given me to see, O Lord.'

I have for some time been thinking of a series of 'Tree' Paintings - for the four seasons. Just shapes, branches & forms against the sky. Now I would like to plan a group of 'Earth' p'tgs. and 'Cloud' p'tgs!

The clouds as they change with the light take on smoky ceruleans, umbers, palest violets & lovely cream whites. Now they rise like feathery tree tops, one layer floating above the other. Now a group resembling small icebergs seem to rise out of the sea casting their shadows into the waters beneath them.

'Snow Idols of Alabaster' carved in relief by the heavenly hand of the Master.

Eight o'clock - a red-orange sunset sky against a dark violet a stormy, tremendous sea of clouds which reminds me of yesterdays

Anna Walinska's Travel Diary, 1954 November-1955 March
 Transcribed and Reviewed by Digital Volunteers
 Extracted Apr-16-2024 02:16:01



Smithsonian Institution

Archives of American Art

The mission of the Smithsonian is the increase and diffusion of knowledge - shaping the future by preserving our heritage, discovering new knowledge, and sharing our resources with the world. Founded in 1846, the Smithsonian is the world's largest museum and research complex, consisting of 19 museums and galleries, the National Zoological Park, and nine research facilities. Become an active part of our mission through the Transcription Center. Together, we are discovering secrets hidden deep inside our collections that illuminate our history and our world.

Join us!

The Transcription Center: <https://transcription.si.edu>

On Facebook: <https://www.facebook.com/SmithsonianTranscriptionCenter>

On Twitter: [@TranscribeSI](https://twitter.com/TranscribeSI)

Connect with the Smithsonian

Smithsonian Institution: www.si.edu

On Facebook: <https://www.facebook.com/Smithsonian>

On Twitter: [@smithsonian](https://twitter.com/smithsonian)