



**Smithsonian Institution**

*Archives of American Art*

## **Anna Walinska's Travel Diary, 1954 November-1955 March**

Extracted on Apr-19-2024 02:34:29

**The Smithsonian Institution thanks all digital volunteers that transcribed and reviewed this material. Your work enriches Smithsonian collections, making them available to anyone with an interest in using them.**

The Smithsonian Institution (the "Smithsonian") provides the content on this website ([transcription.si.edu](https://transcription.si.edu)), other Smithsonian websites, and third-party sites on which it maintains a presence ("SI Websites") in support of its mission for the "increase and diffusion of knowledge." The Smithsonian invites visitors to use its online content for personal, educational and other non-commercial purposes. By using this website, you accept and agree to abide by the [following terms](#).

- If sharing the material in personal and educational contexts, please cite the Archives of American Art as source of the content and the project title as provided at the top of the document. Include the accession number or collection name; when possible, link to the Archives of American Art website.
- If you wish to use this material in a for-profit publication, exhibition, or online project, please contact Archives of American Art or [transcribe@si.edu](mailto:transcribe@si.edu)

For more information on this project and related material, contact the Archives of American Art. [See this project](#) and other collections in the Smithsonian Transcription Center.

10

Nov. 16.  
January 10

idyllic sunset. The sky, palest violet, blending down into palest lemon yellow into the horizon of pale then deep orange banded by a line of cadmium orange. The sea against this a strange, opaque green blue. Not to forget, the delicate cloud line of cadmium & alizarin red overshadowed by black which broke the gentle lemon yellow. Simply unforgettable.

Eve. 16th.

Got to the Royal Hawaiian Hotel at 8.45 It is simple fabulous - one can't help but be impressed. Pale apricot in color - tremendous pillars & high ceilings surrounded by magnificent native foliage. I showered, unpacked, & took myself to the Beachcomber, where the singing & the dancers are quite authentic. The atmosphere is authentic too - all plants & reed, etc. The help as everywhere Hawaiians & very friendly. I ended up by being invited to dance & in the company of

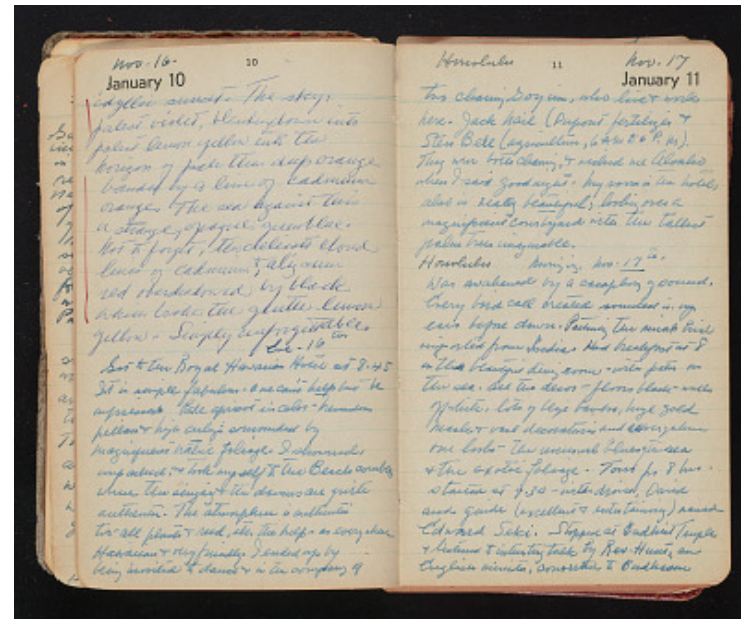
11

Honolulu Nov. 17  
January 11

two charming Goyim, who live & work here. Jack Hail (Dupont fertilizer & Sten Bell (agriculture, 6 AM to 6 P.M). They were both charming, & wished me Aloaha when I said goodnight. My room in the hotel, also is really beautiful; looking over a magnificent courtyard into the tallest palm trees imaginable.

Honolulu Morning. Nov. 17th,

Was awakened by a cacophony of sound. Every bird call created sounded in my ears before down. Particularly the minah bird imported from India. Had breakfast at 8 in the beautiful dining room - with patio on the sea. All the decor - floors black - walls off-white, lots of beige bamboo, huge gold mask & vase decorations and everywhere one looks the unusual blues of the sea & the exotic foliage. Tour for 8 hrs. started at 9.30 - with driver, David and guide (excellent & entertaining) named Edward Seki. Stopped at Buddhist Temple & listened to interesting talk by Rev. Hunt, an English minister, converted to Buddhism



Anna Walinska's Travel Diary, 1954 November-1955 March  
Transcribed and Reviewed by Digital Volunteers  
Extracted Apr-19-2024 02:34:29



## Smithsonian Institution

*Archives of American Art*

The mission of the Smithsonian is the increase and diffusion of knowledge - shaping the future by preserving our heritage, discovering new knowledge, and sharing our resources with the world. Founded in 1846, the Smithsonian is the world's largest museum and research complex, consisting of 19 museums and galleries, the National Zoological Park, and nine research facilities. Become an active part of our mission through the Transcription Center. Together, we are discovering secrets hidden deep inside our collections that illuminate our history and our world.

Join us!

The Transcription Center: <https://transcription.si.edu>

On Facebook: <https://www.facebook.com/SmithsonianTranscriptionCenter>

On Twitter: [@TranscribeSI](https://twitter.com/TranscribeSI)

Connect with the Smithsonian

Smithsonian Institution: [www.si.edu](http://www.si.edu)

On Facebook: <https://www.facebook.com/Smithsonian>

On Twitter: [@smithsonian](https://twitter.com/smithsonian)