



Smithsonian Institution

Archives of American Art

Anna Walinska's Travel Diary, 1954 November-1955 March

Extracted on Apr-19-2024 12:18:08

The Smithsonian Institution thanks all digital volunteers that transcribed and reviewed this material. Your work enriches Smithsonian collections, making them available to anyone with an interest in using them.

The Smithsonian Institution (the "Smithsonian") provides the content on this website (transcription.si.edu), other Smithsonian websites, and third-party sites on which it maintains a presence ("SI Websites") in support of its mission for the "increase and diffusion of knowledge." The Smithsonian invites visitors to use its online content for personal, educational and other non-commercial purposes. By using this website, you accept and agree to abide by the [following terms](#).

- If sharing the material in personal and educational contexts, please cite the Archives of American Art as source of the content and the project title as provided at the top of the document. Include the accession number or collection name; when possible, link to the Archives of American Art website.
- If you wish to use this material in a for-profit publication, exhibition, or online project, please contact Archives of American Art or transcribe@si.edu

For more information on this project and related material, contact the Archives of American Art. [See this project](#) and other collections in the Smithsonian Transcription Center.

28

[[strikethrough]] January 28 [[/strikethrough]]
Sun. 21

(Yoshiwara [[Yoshiwara]] - Red Light District of Tokyo. Girls sold by their families stand in front of houses calling to onlookers)

character of all their crafts - it is difficult to conceive how poorly they show in the fine arts. I was in several art galleries. All the work is quite efficient, dilettantism. Completely eclectic. Not an original painter amongst them. Curious & disappointing. Their rug designs were extremely handsome - as well as their fabrics. And everywhere enormous crowds of people, walking, sightseeing, looking, buying, like peasants at a fair. Provincialism in the big city.

Monday Nov. 22 '

Today was again sightseeing in the city. I met Miya Sapir to go shopping for Kokemono scrolls. Decided against it because they would take too long to order. The shop I looked for was on the outskirts of

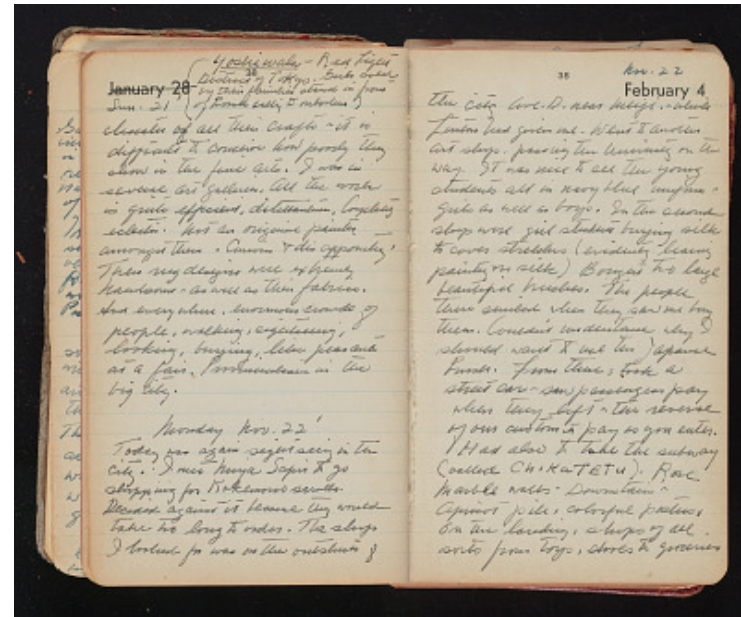
35

Nov. 22

February 4

the city Ave. D. near Meiji. - which Linton had given me. Went to another art shop, passing the University on the way. It was nice to see the young students all in navy blue uniforms - girls as well as boys. In the second shop were girl students buying silk to cover stretchers (evidently learning painting on silk) Bought two large beautiful brushes. The people there smiled when they saw me buy them. Couldn't understand why I should want to use the Japanese brush. From there, took a street car - saw passengers pay when they left - the reverse of our custom to pay as you enter.

Had also to take the subway (called ChiKaTETu). Rose marble walls. Downstairs Apricot pile, colorful posters, on the landing, shops of all sorts from toys, shoes to groceries



Anna Walinska's Travel Diary, 1954 November-1955 March
Transcribed and Reviewed by Digital Volunteers
Extracted Apr-19-2024 12:18:08



Smithsonian Institution

Archives of American Art

The mission of the Smithsonian is the increase and diffusion of knowledge - shaping the future by preserving our heritage, discovering new knowledge, and sharing our resources with the world. Founded in 1846, the Smithsonian is the world's largest museum and research complex, consisting of 19 museums and galleries, the National Zoological Park, and nine research facilities. Become an active part of our mission through the Transcription Center. Together, we are discovering secrets hidden deep inside our collections that illuminate our history and our world.

Join us!

The Transcription Center: <https://transcription.si.edu>

On Facebook: <https://www.facebook.com/SmithsonianTranscriptionCenter>

On Twitter: [@TranscribeSI](https://twitter.com/TranscribeSI)

Connect with the Smithsonian

Smithsonian Institution: www.si.edu

On Facebook: <https://www.facebook.com/Smithsonian>

On Twitter: [@smithsonian](https://twitter.com/smithsonian)