



Smithsonian Institution

Archives of American Art

Anna Walinska's Travel Diary, 1954 November-1955 March

Extracted on Apr-20-2024 11:07:38

The Smithsonian Institution thanks all digital volunteers that transcribed and reviewed this material. Your work enriches Smithsonian collections, making them available to anyone with an interest in using them.

The Smithsonian Institution (the "Smithsonian") provides the content on this website (transcription.si.edu), other Smithsonian websites, and third-party sites on which it maintains a presence ("SI Websites") in support of its mission for the "increase and diffusion of knowledge." The Smithsonian invites visitors to use its online content for personal, educational and other non-commercial purposes. By using this website, you accept and agree to abide by the [following terms](#).

- If sharing the material in personal and educational contexts, please cite the Archives of American Art as source of the content and the project title as provided at the top of the document. Include the accession number or collection name; when possible, link to the Archives of American Art website.
- If you wish to use this material in a for-profit publication, exhibition, or online project, please contact Archives of American Art or transcribe@si.edu

For more information on this project and related material, contact the Archives of American Art. [See this project](#) and other collections in the Smithsonian Transcription Center.

158

Thursday, Dec. 30
~~June 6~~ ~~June 6~~ ~~June 6~~

Mr. & Mrs. ~~June 6~~ Loyo ~~June 6~~ Lawyone, journalist -
 Dr. Bosch, Lou, Dorothy & I made up the dinner party.

Conversation with Welsing about Thomas Dylan's poetry, which I
 declared reminded me of Rilke. He agreed. Welsing finds Dylan too
 difficult ("It should not be too difficult to be simple") & prefers Elliot & his
 mysticism.

At table, discussion on Toynbee & Spengler - consensus, Toynbee has
 a cosmic synthesis of history. Spengler is too subjective & personal in
 his interpretation.

I find I misspelled names. Mr. Lawyone is publisher in Rangoon, of the
 'Nation'. Mr. Dillon, is secretary of the Burmese Health Commission. He
 is Eurasian.

Friday, Dec. 31.

Not feeling well today & am resting in bed. Reading & dozing.

Tonight will be the first New Year's Eve in several years that I have not
 spent with my darlings at home. It is difficult,

159

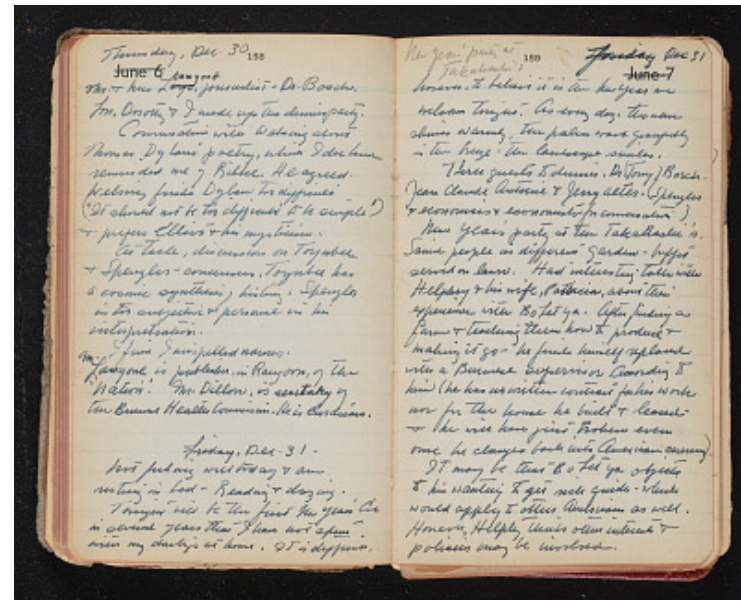
New Year's party at Takahashi's
 Friday Dec 31
~~June 7~~ ~~June 7~~ ~~June 7~~

however, to believe it is the New Year we welcome tonight. As every
 day, the sun shines warmly, the palms wave gracefully in the breeze -
 the landscape smiles.

Three guests to dinner. Dr. (Tony) Bosch. Jean Claude Antoine & Jerry
 Alter. (Spengler & economics & economists for conversation)

New Year's party at the Takahashi's. Same people in different garden -
 buffet served on lawn. Had interesting talk with Helphry & his wife,
 Patricia, about their experience with Bo Let Ya. After finding a farm &
 teaching them how to produce & making it go - he finds himself replaced
 with a Burmese supervisor. According to him (he has no written contract
 for his work nor for the house he built & leased - & he will have just
 broken even once he changes back into American currency).

It may be that Bo Let Ya objects to his wanting to get rich quick - which
 would apply to other Americans as well. However, Helphry thinks other
 interests & policies may be involved.



Anna Walinska's Travel Diary, 1954 November-1955 March
Transcribed and Reviewed by Digital Volunteers
Extracted Apr-20-2024 11:07:38



Smithsonian Institution

Archives of American Art

The mission of the Smithsonian is the increase and diffusion of knowledge - shaping the future by preserving our heritage, discovering new knowledge, and sharing our resources with the world. Founded in 1846, the Smithsonian is the world's largest museum and research complex, consisting of 19 museums and galleries, the National Zoological Park, and nine research facilities. Become an active part of our mission through the Transcription Center. Together, we are discovering secrets hidden deep inside our collections that illuminate our history and our world.

Join us!

The Transcription Center: <https://transcription.si.edu>

On Facebook: <https://www.facebook.com/SmithsonianTranscriptionCenter>

On Twitter: [@TranscribeSI](https://twitter.com/TranscribeSI)

Connect with the Smithsonian

Smithsonian Institution: www.si.edu

On Facebook: <https://www.facebook.com/Smithsonian>

On Twitter: [@smithsonian](https://twitter.com/smithsonian)